



Streets Master Plan

Potential Projects to be Prioritized

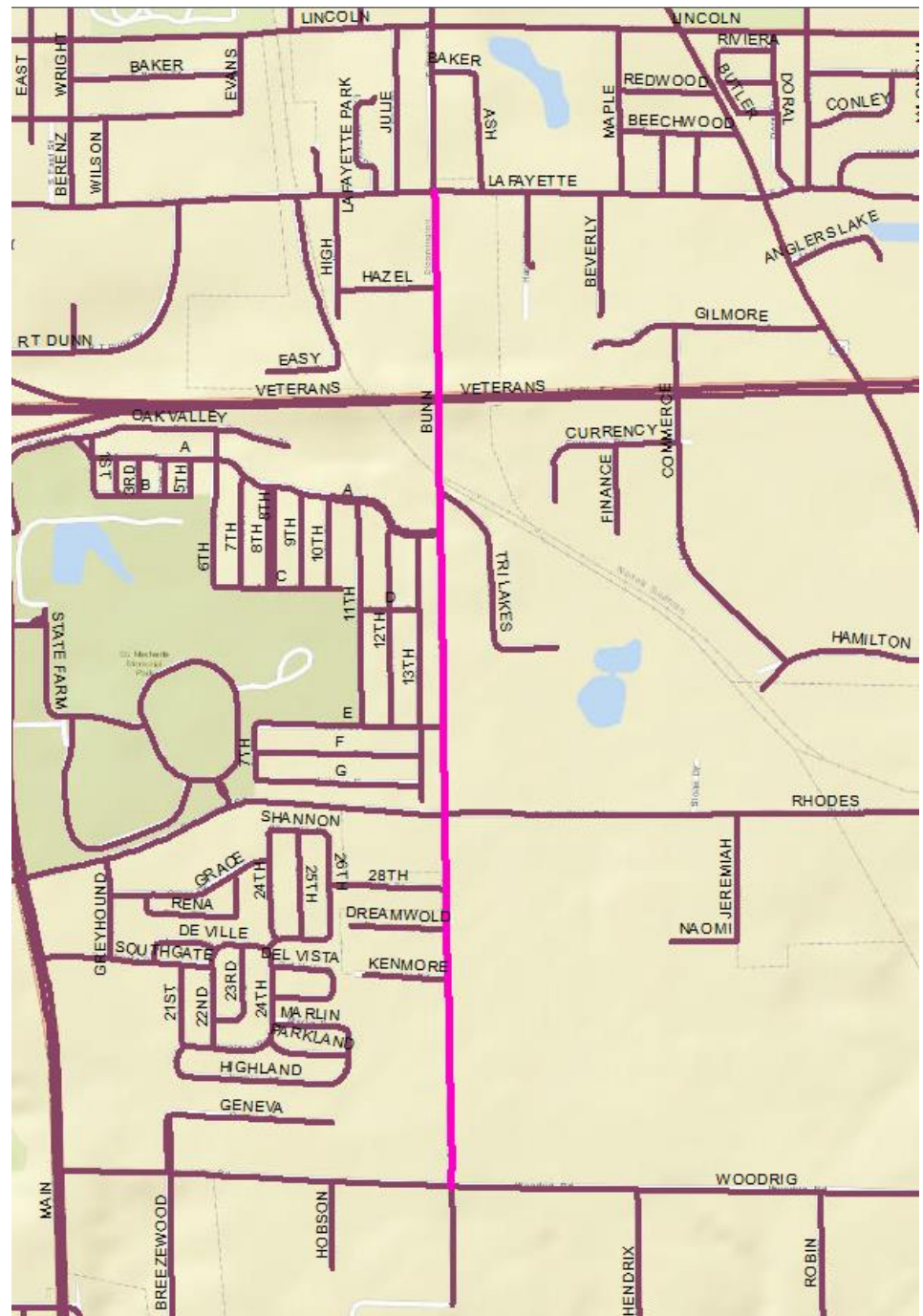
Kurt Bialobreski, P.E., PTOE

Becca Wagner, E.I.

Bunn Street Reconstruction Lafayette to Woodrig

Average Daily Traffic:
2,000-2,950 vehicles

Pavement Condition Ratings:
Lafayette to Tri-Lakes (Poor)
Tri-Lakes to 28th (New)
28th to Woodrig (Undocumented)



College Avenue

Reconstruction

Veterans Road to Airport Road

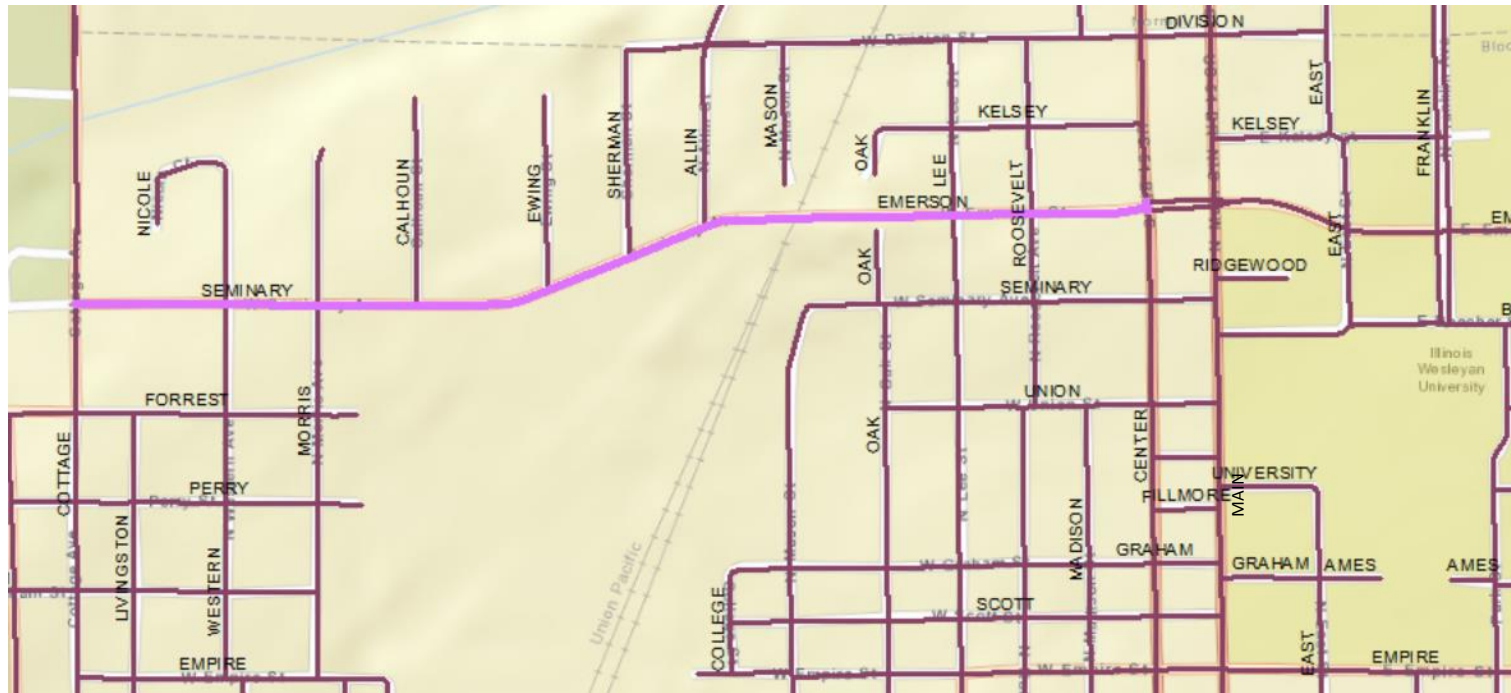


Average Daily Traffic:
8,200-14,200 vehicles

Pavement Condition Ratings:
Veterans to Hershey (Fair)
Hershey to Airport (New)

Emerson Street/Seminary Avenue

Widening and Reconstruction Cottage Avenue to Center Street



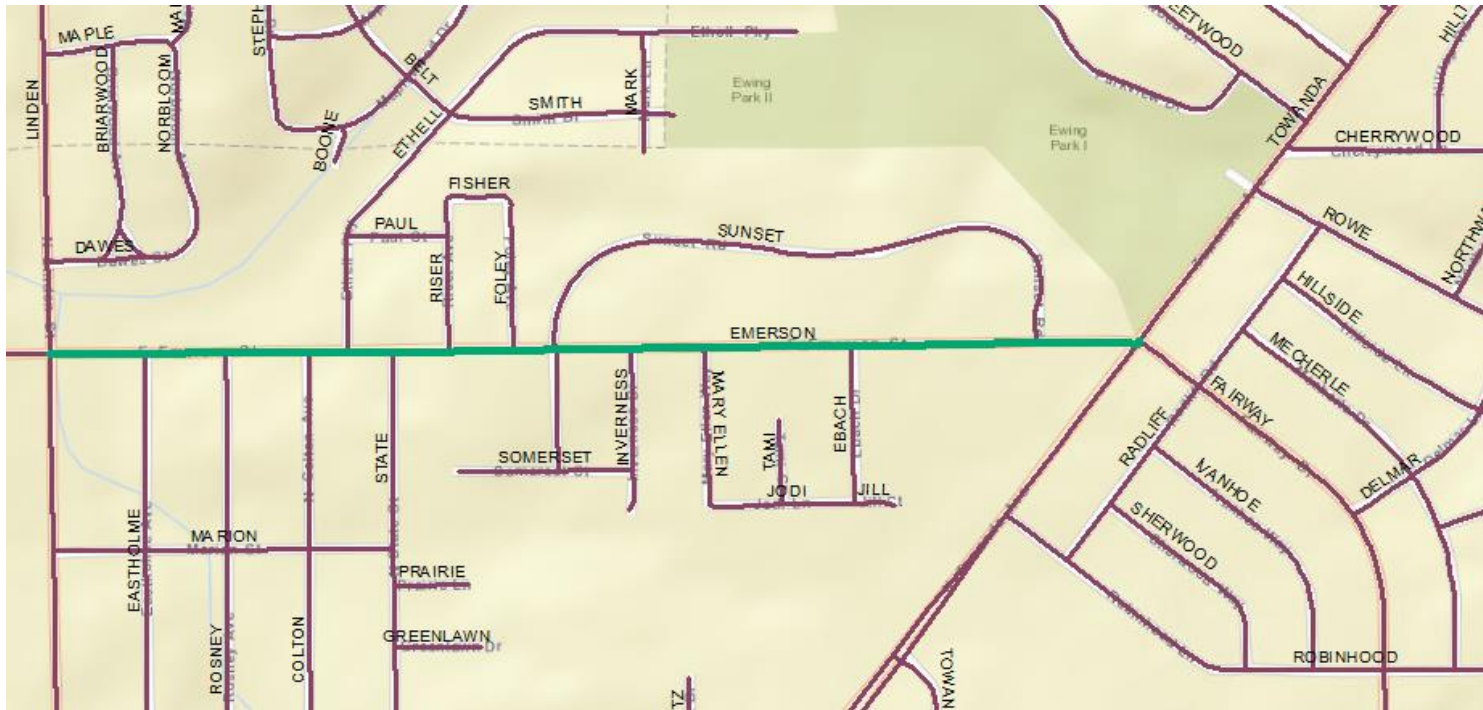
Average Daily Traffic:
4,000 – 7,200 vehicles
Expected to be over capacity by 2035

Pavement Condition Ratings:
Cottage to Lee (Good)
Lee to Center (New)

Emerson Street

Widening and Reconstruction

Linden to Towanda



Average Daily Traffic:
9,400 – 10,500 vehicles
Expected to be over capacity by 2035

Pavement Condition Ratings:
Linden to Ebach (Fair)
Ebach to Towanda (Good)

Euclid/Brown Realignment

New Alignment

Average Daily Traffic:
5,600 – 7,500 vehicles

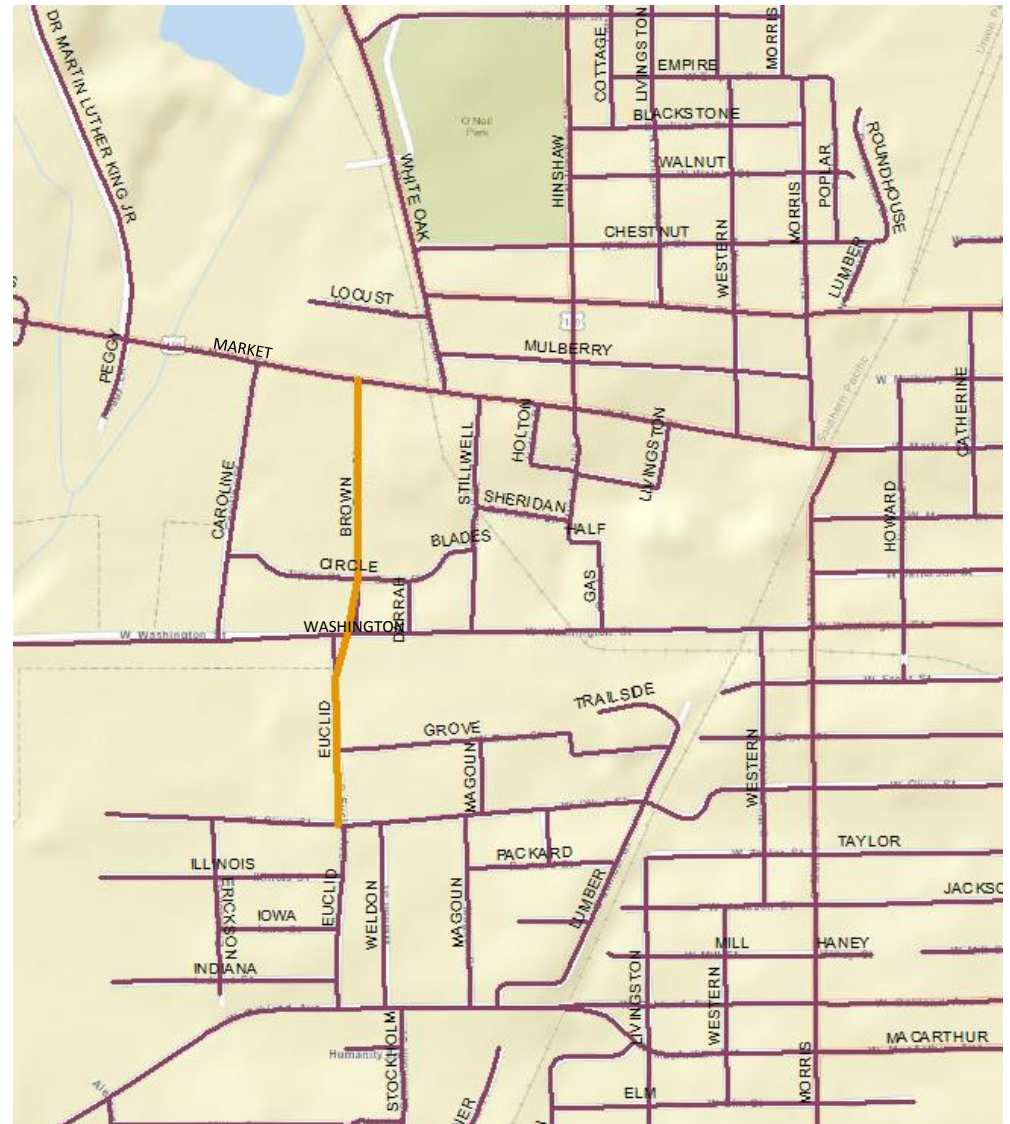
Pavement Condition Ratings:

Euclid Street:

Oakland to Grove (Excellent)
Grove to Washington (Poor)

Brown Street:

Washington to Market (Fair)



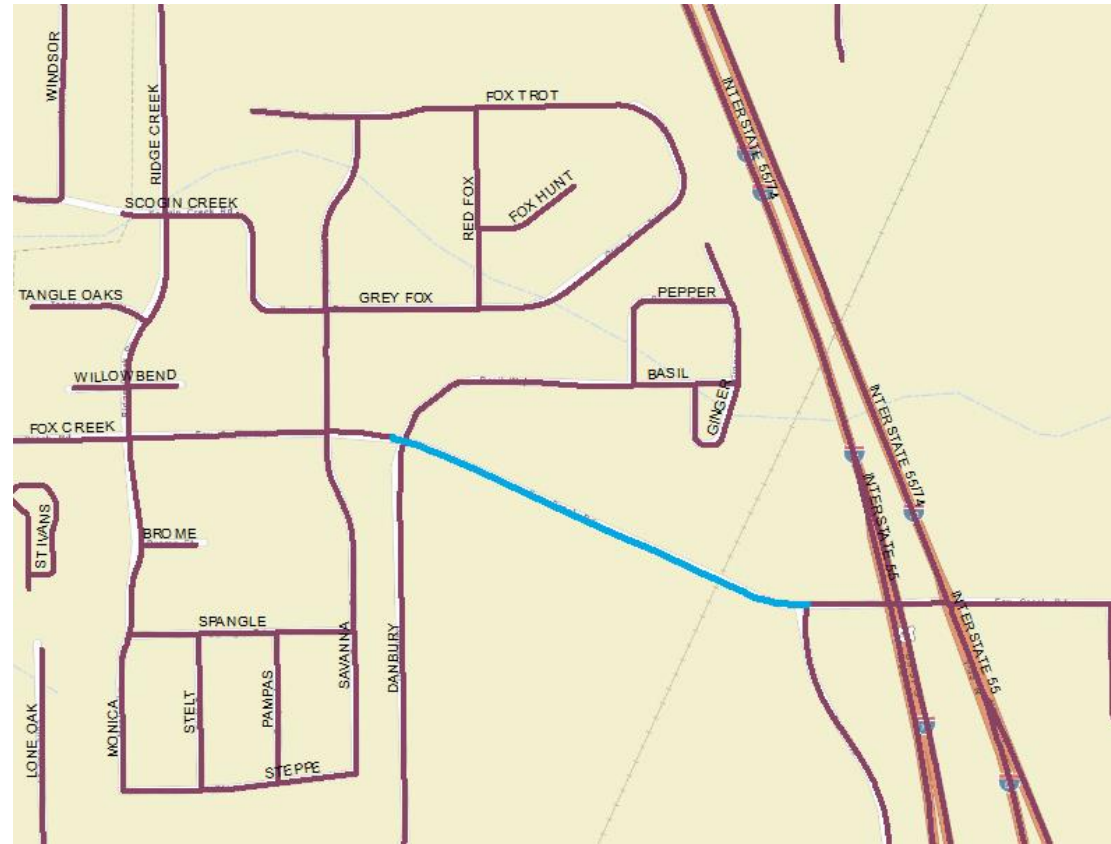
Fox Creek Road

Reconstruction

Danbury to Beich

Average Daily Traffic:
6,200 vehicles

Pavement Condition Ratings:
Danbury to Bridge (Fair)
Bridge to Beich (Very Good)



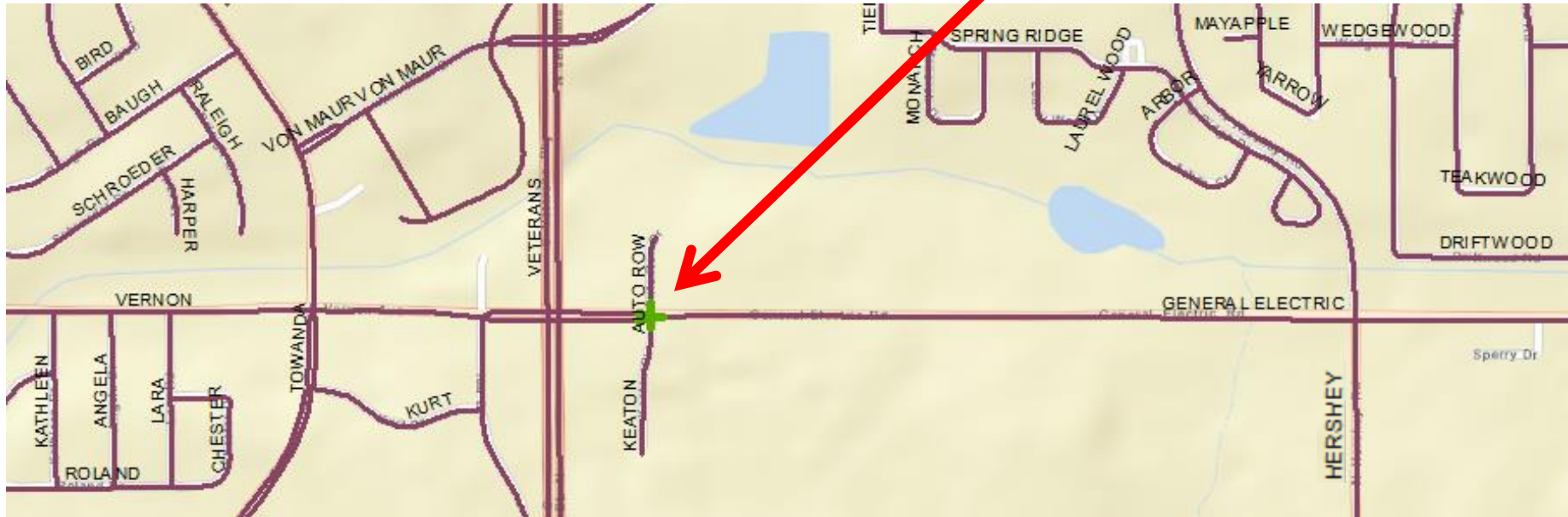
Fox Creek Road Bridge Reconstruction Over Union Pacific Rail Road

Average Daily Traffic:
6,200 vehicles



General Electric Road

Signal Installation at Keaton Place

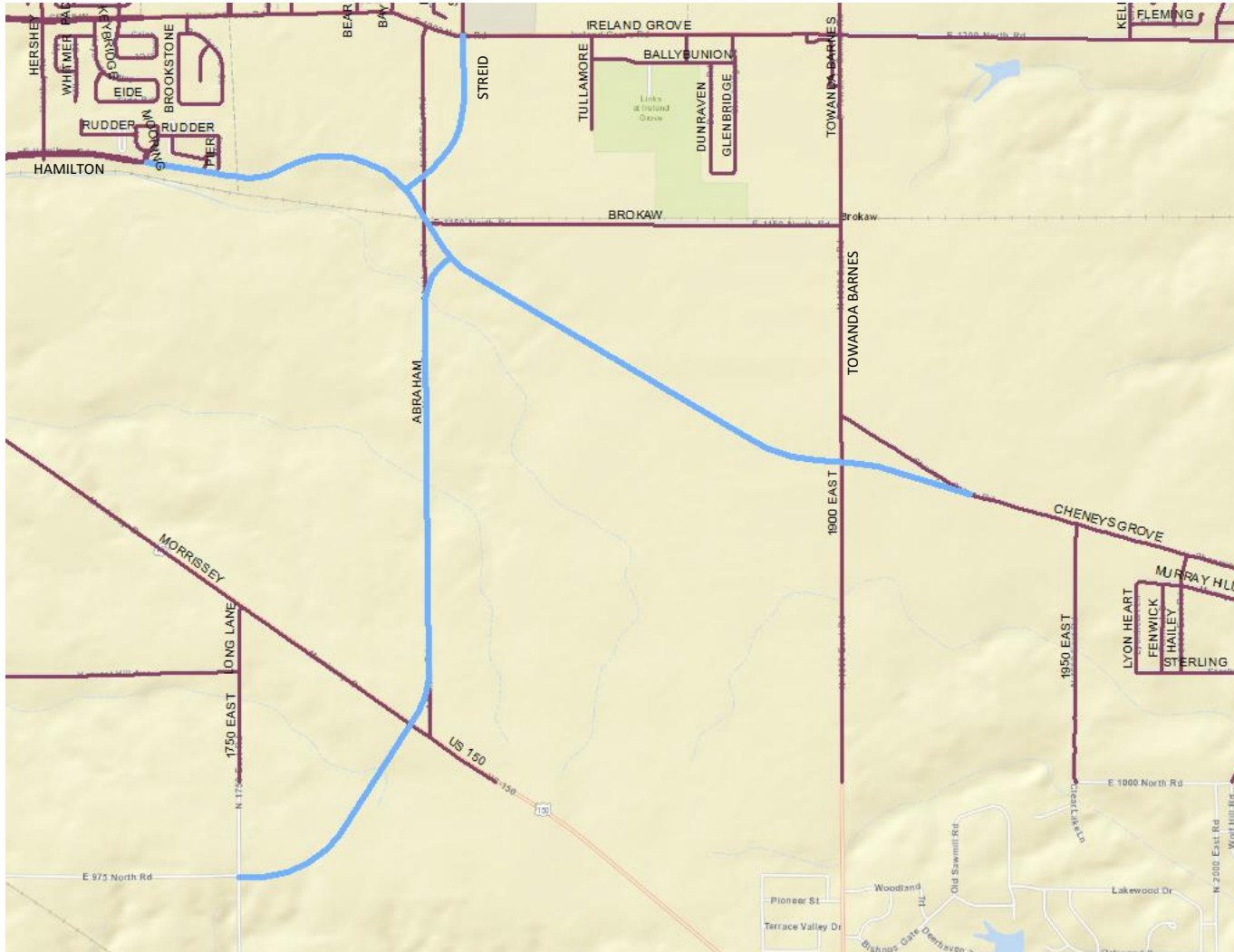


Average Daily Traffic:
18,400 vehicles (General Electric)

Pavement Condition Ratings:
Intersection (Very Good)

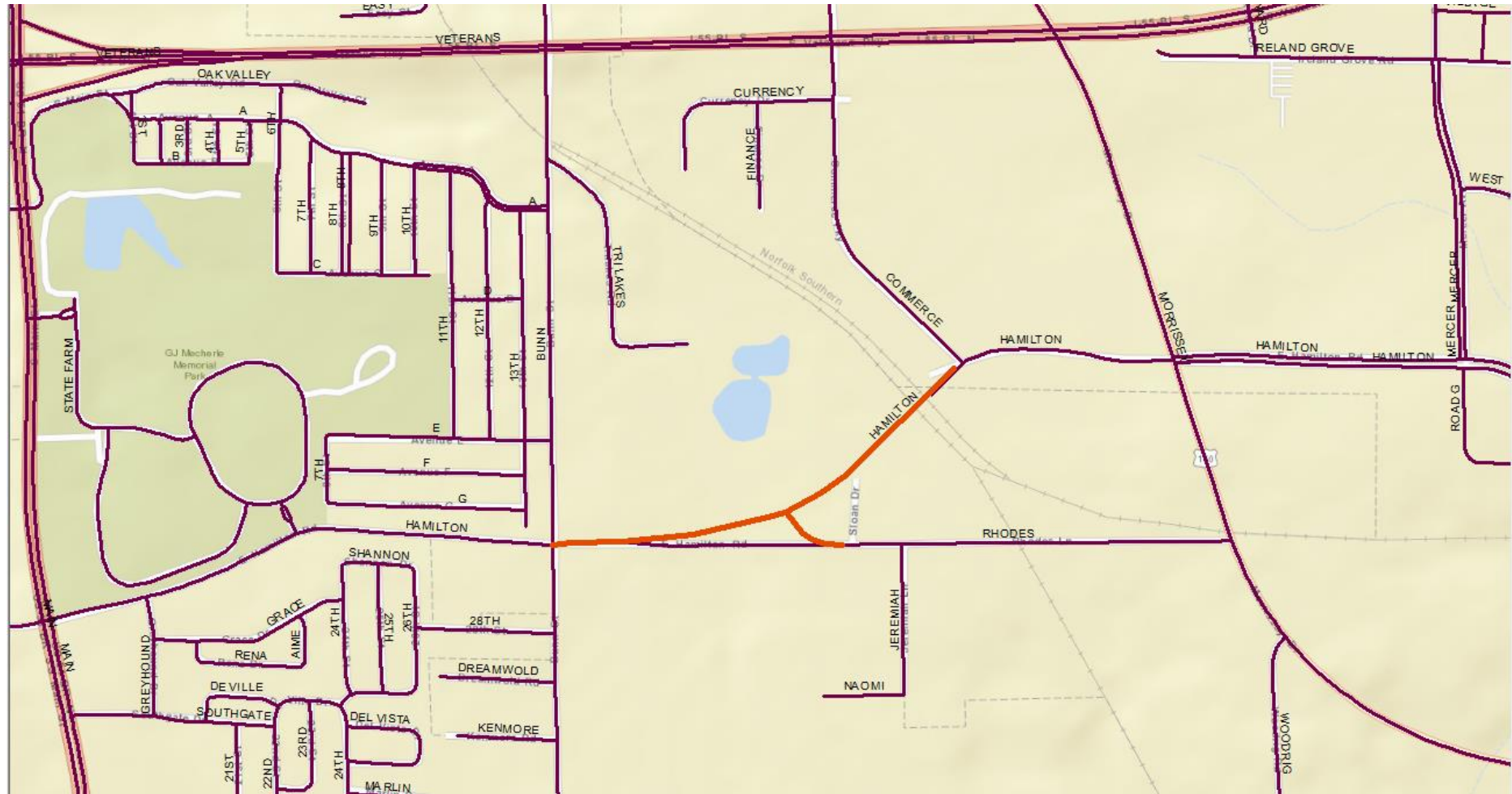
Hamilton Road East

New Alignment

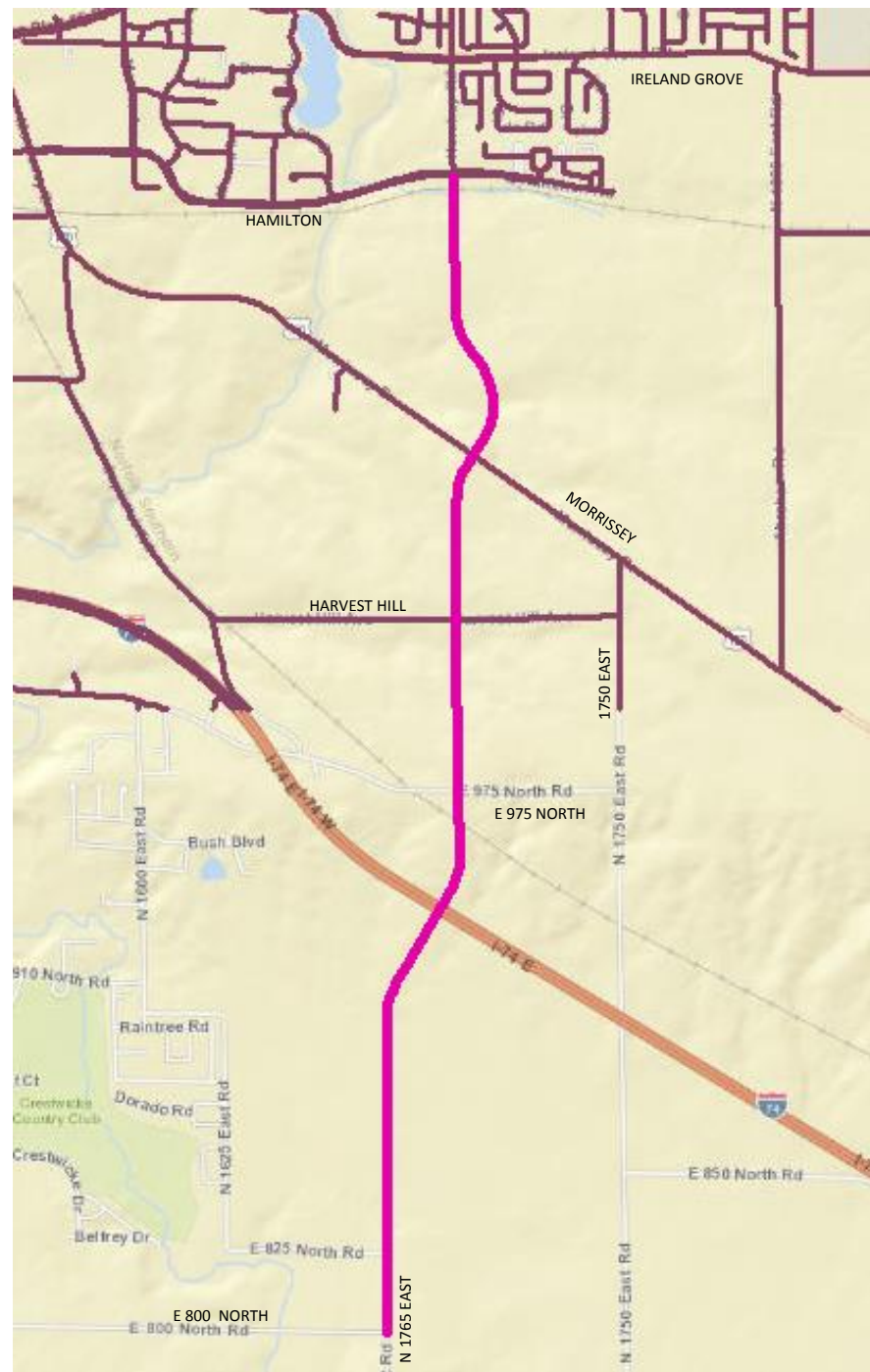


Hamilton Road (Bunn to Commerce)

New Alignment



Hershey Road New Alignment



Hershey Road

Signal Installation at Arrowhead

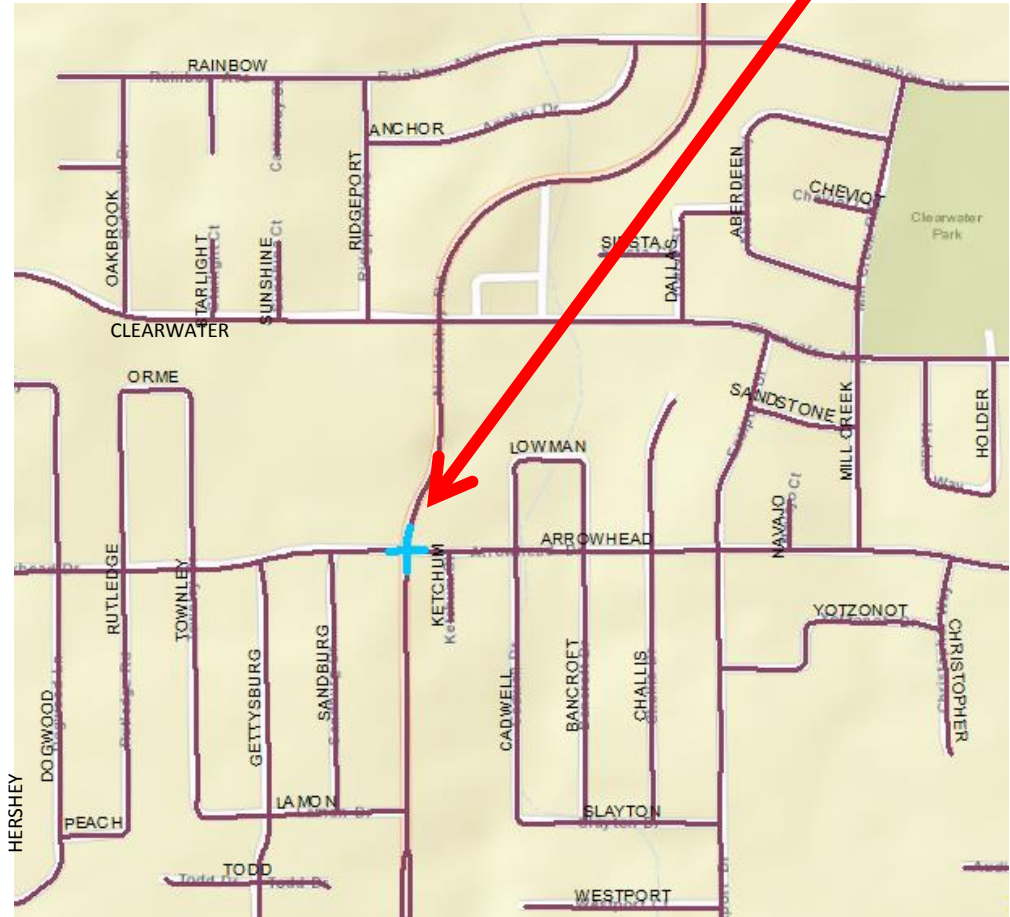
Average Daily Traffic:

11,900 – 16,100 vehicles (Hershey)

1,900 – 3,100 vehicles (Arrowhead)

Pavement Condition Ratings:

Intersection (Fair)



Hershey Road

Signal Installation at Clearwater

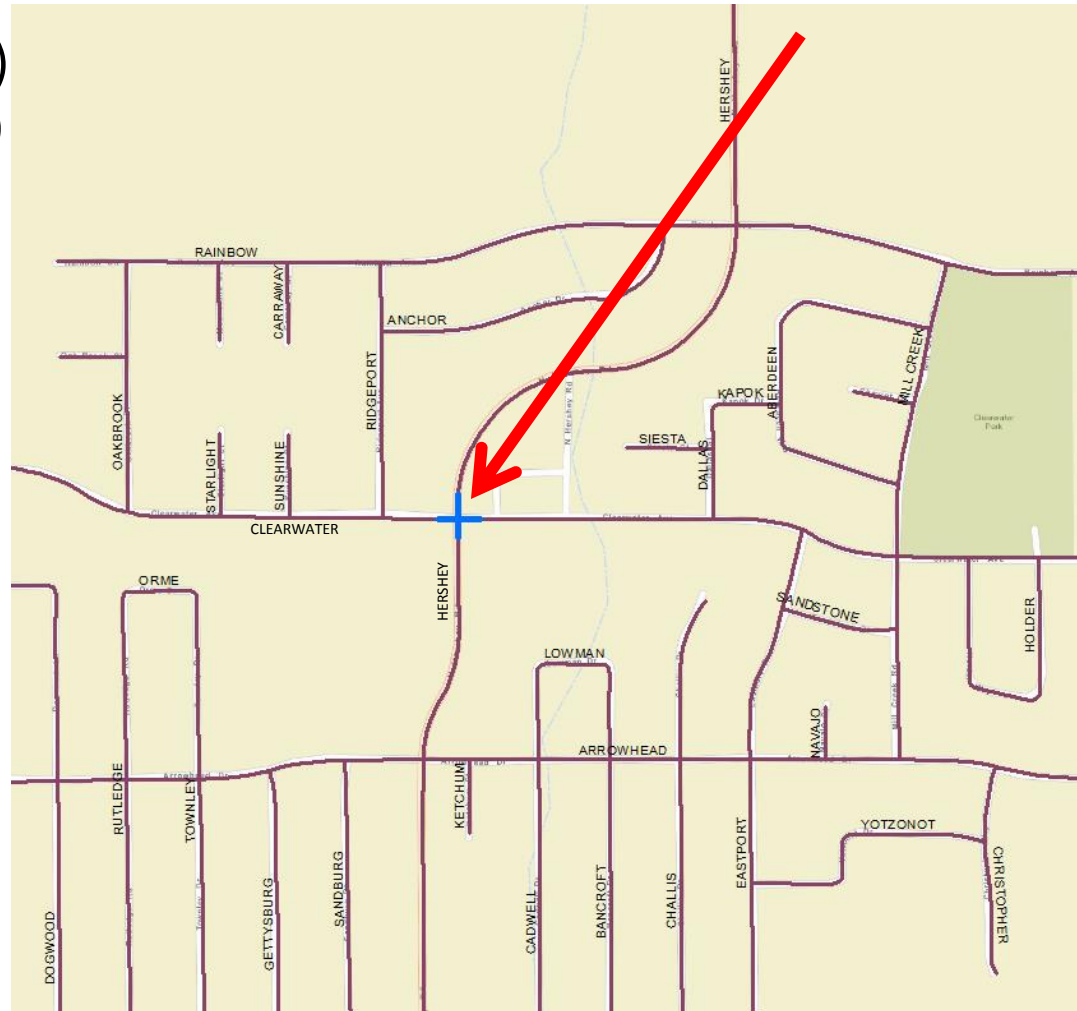
Average Daily Traffic:

10,700 – 11,900 vehicles (Hershey)

3,300 - 4,550 vehicles (Clearwater)

Pavement Condition Ratings:

Intersection (Fair)



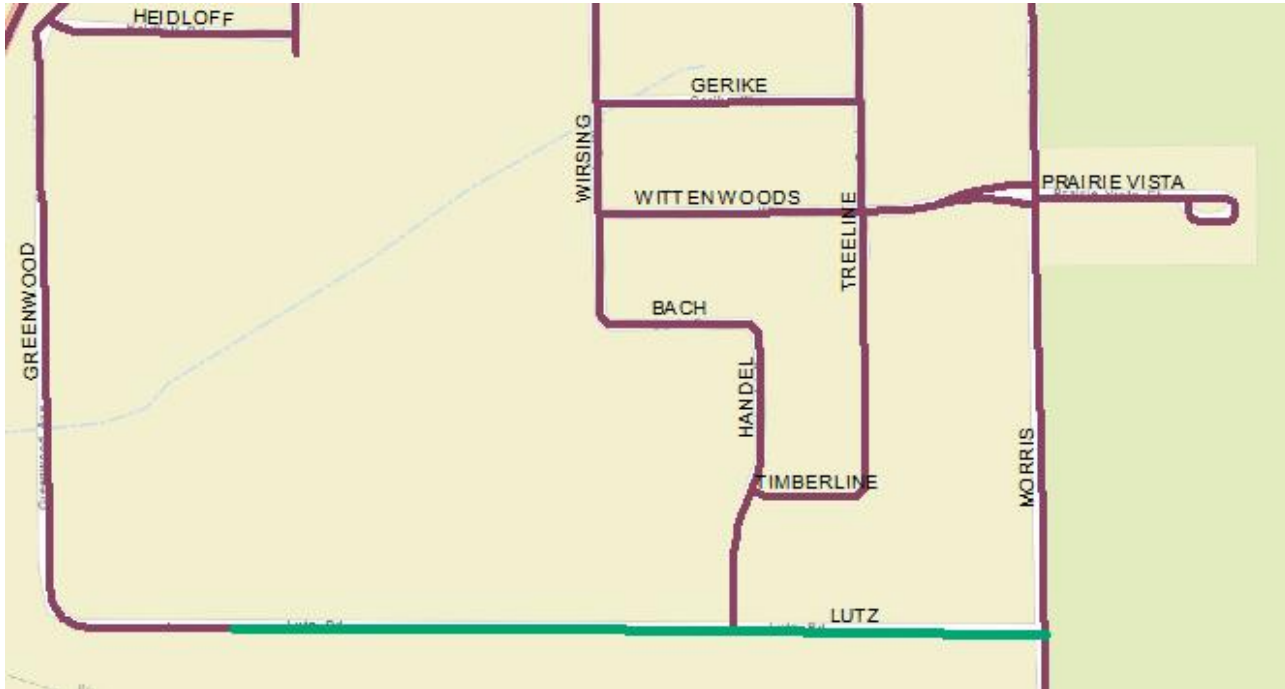
Lafayette Street Reconstruction Center Street to Ash Street



Average Daily Traffic:
1,900 – 4,150 vehicles

Pavement Condition Ratings:
Center to Main (Very Good)
Main to Wilson (Poor)
Wilson to Bunn (Fair)
Bunn to Ash (Very Poor)

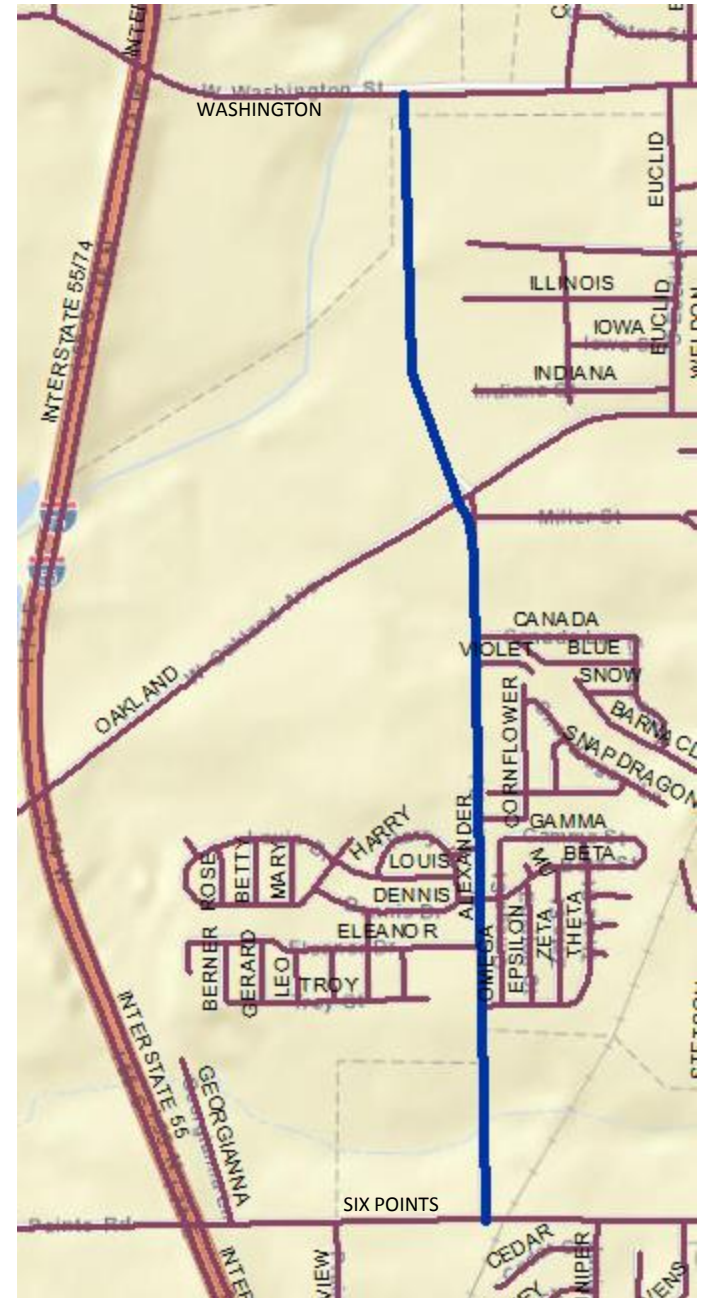
Lutz Road Reconstruction Morris to Luther Oaks Facility



Average Daily Traffic:
150 vehicles

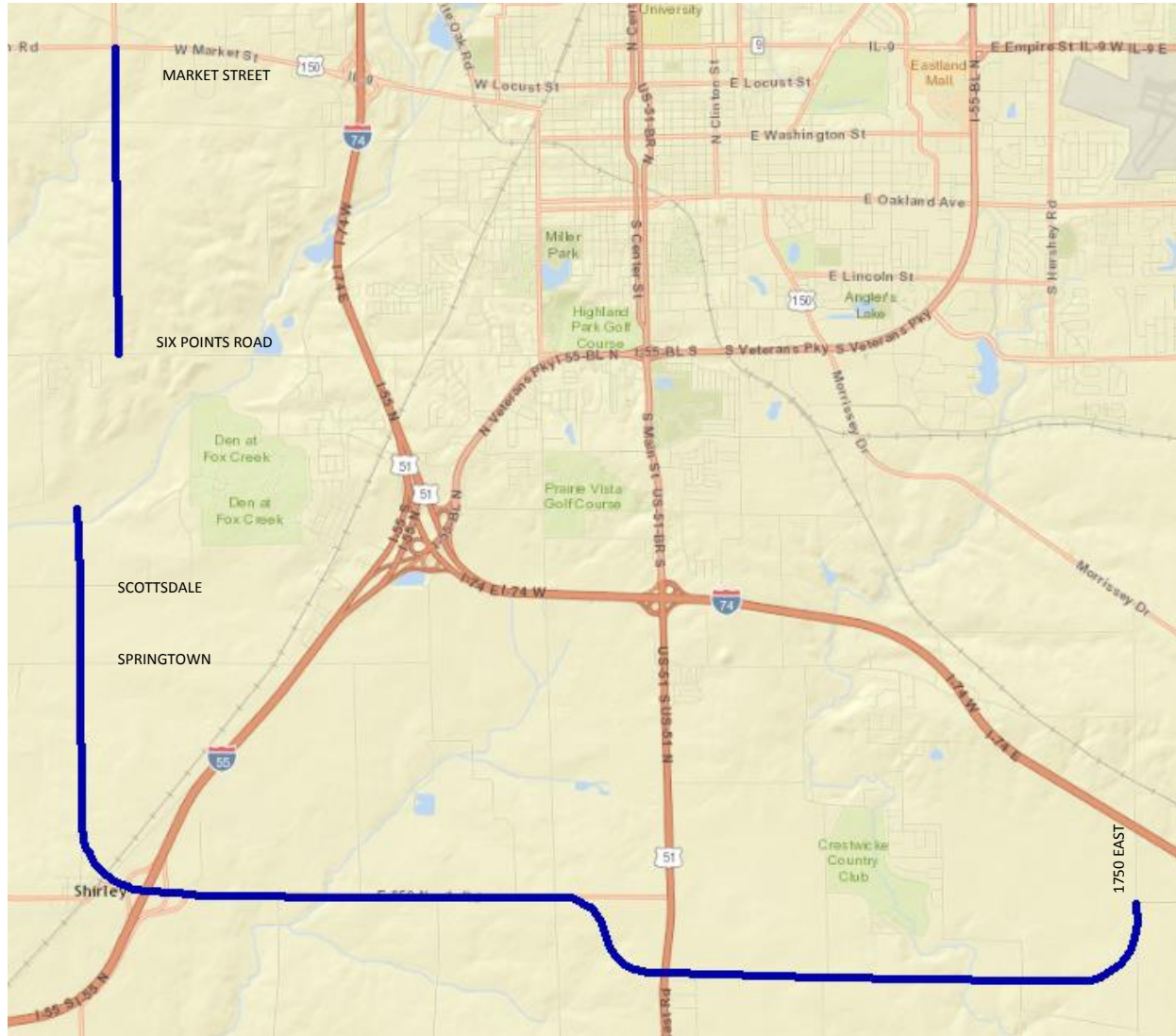
Pavement Condition Ratings:
Morris to Luther Oaks Facility (Good)

Martin Luther King, Jr. Road New Alignment



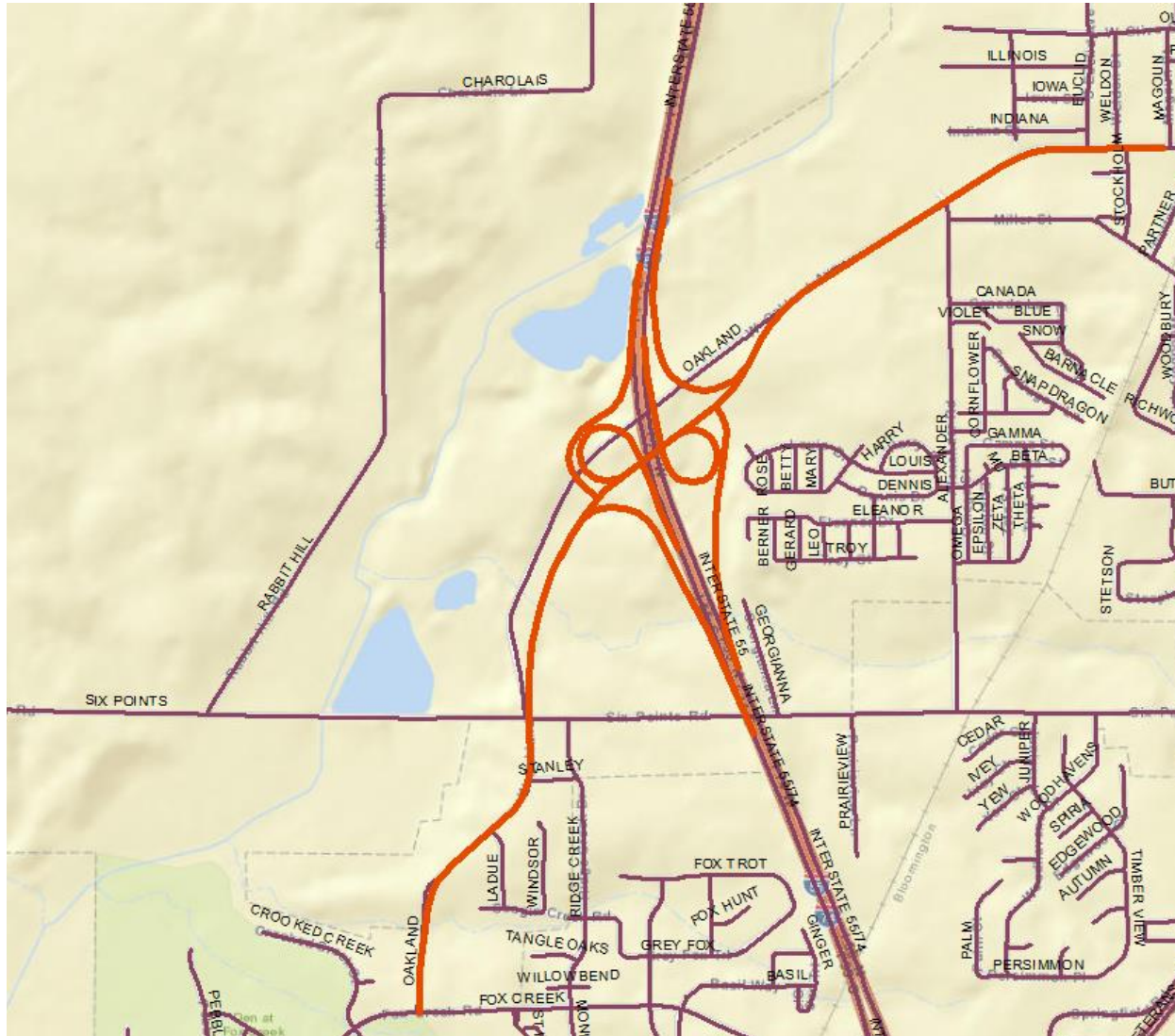
Mitsubishi Motorway

New Alignment



Oakland Avenue Interchange

New Alignment



Oakland Avenue

Widening and Reconstruction

Fox Creek to Magoun (Oakland) / Bloomingdale to Longden (Six Points)

Average Daily Traffic:

2,450 – 5,900 vehicles (Oakland)

1,700 – 5,800 vehicles (Six Points)

Pavement Condition Ratings:

Oakland Avenue:

Fox Creek to Six Points (Undocumented)

Six Points to Alexander (Good)

Alexander to Weldon (Fair)

Weldon to Magoun (Poor)

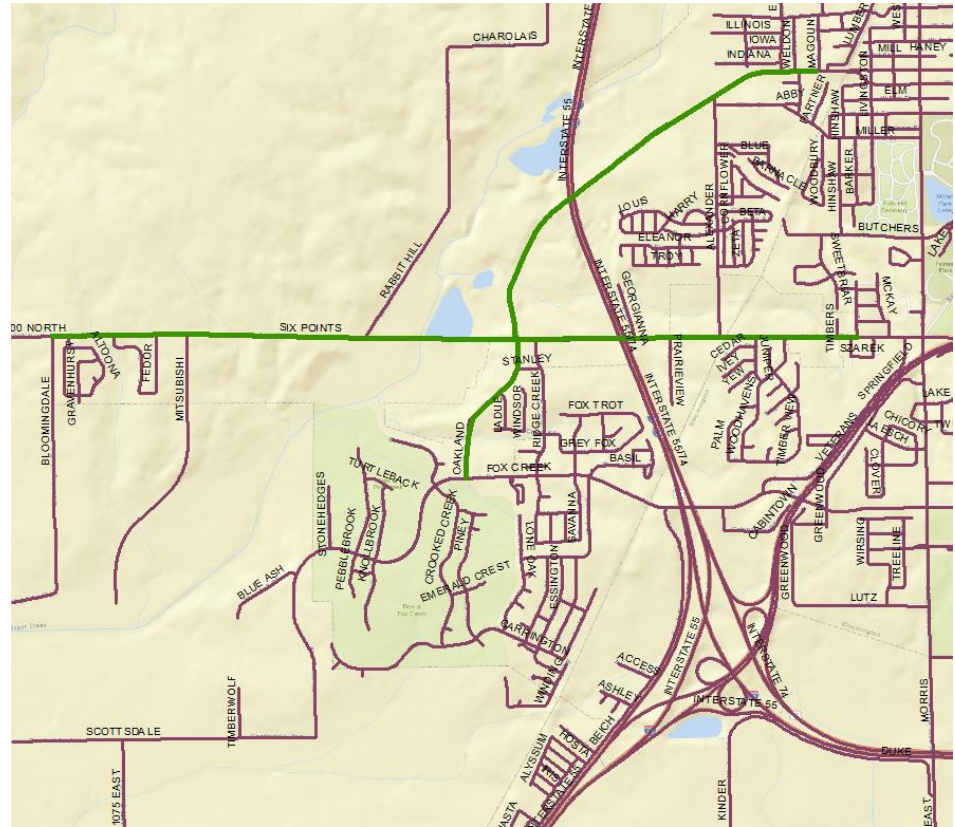
Six Points Road:

Bloomingdale to Mitsubishi (Fair)

Mitsubishi to Rabbit Hill (Poor)

Rabbit Hill to Oakland (Fair)

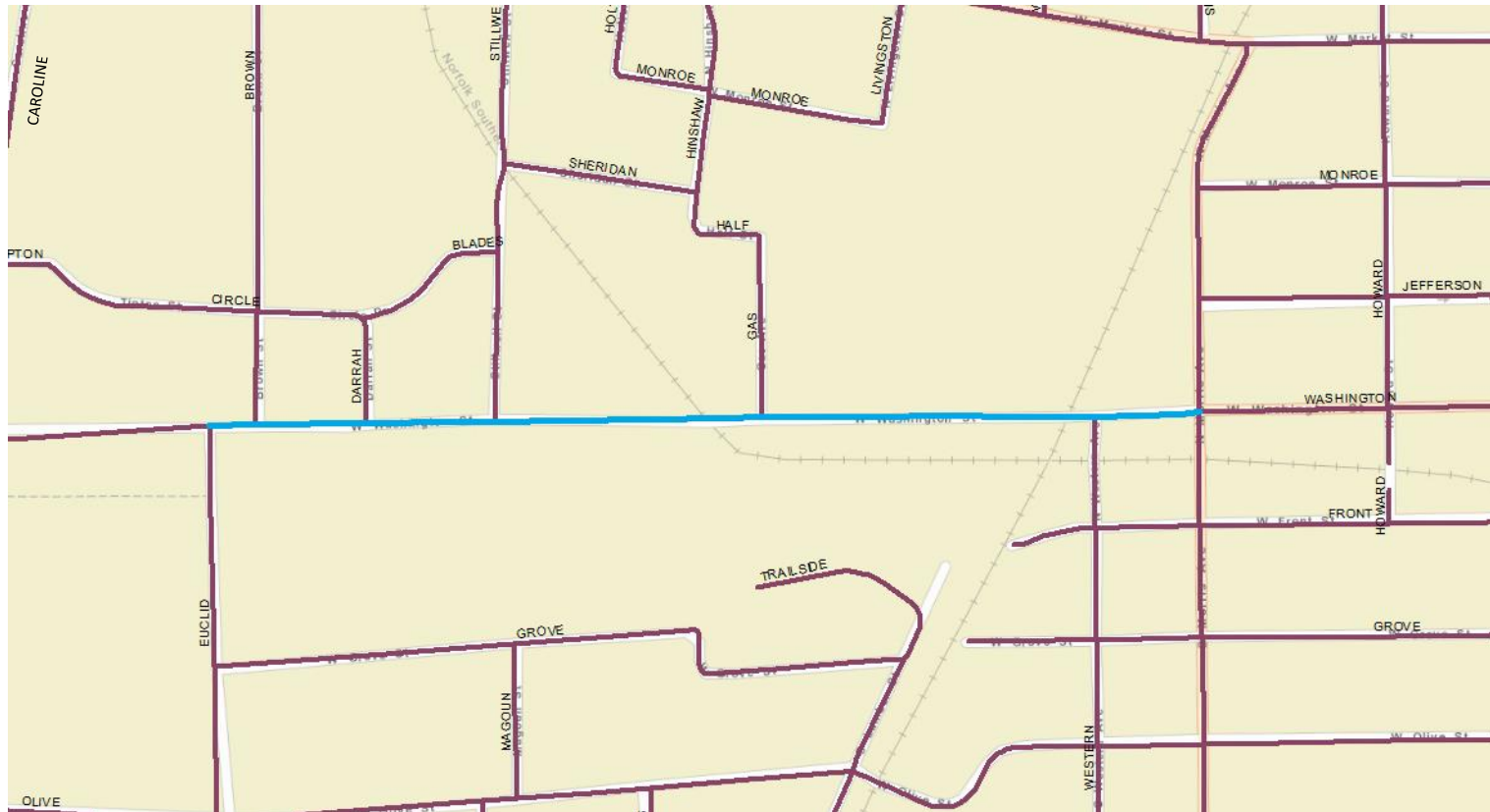
Oakland to Longden (Fair)



Washington Street

Widening

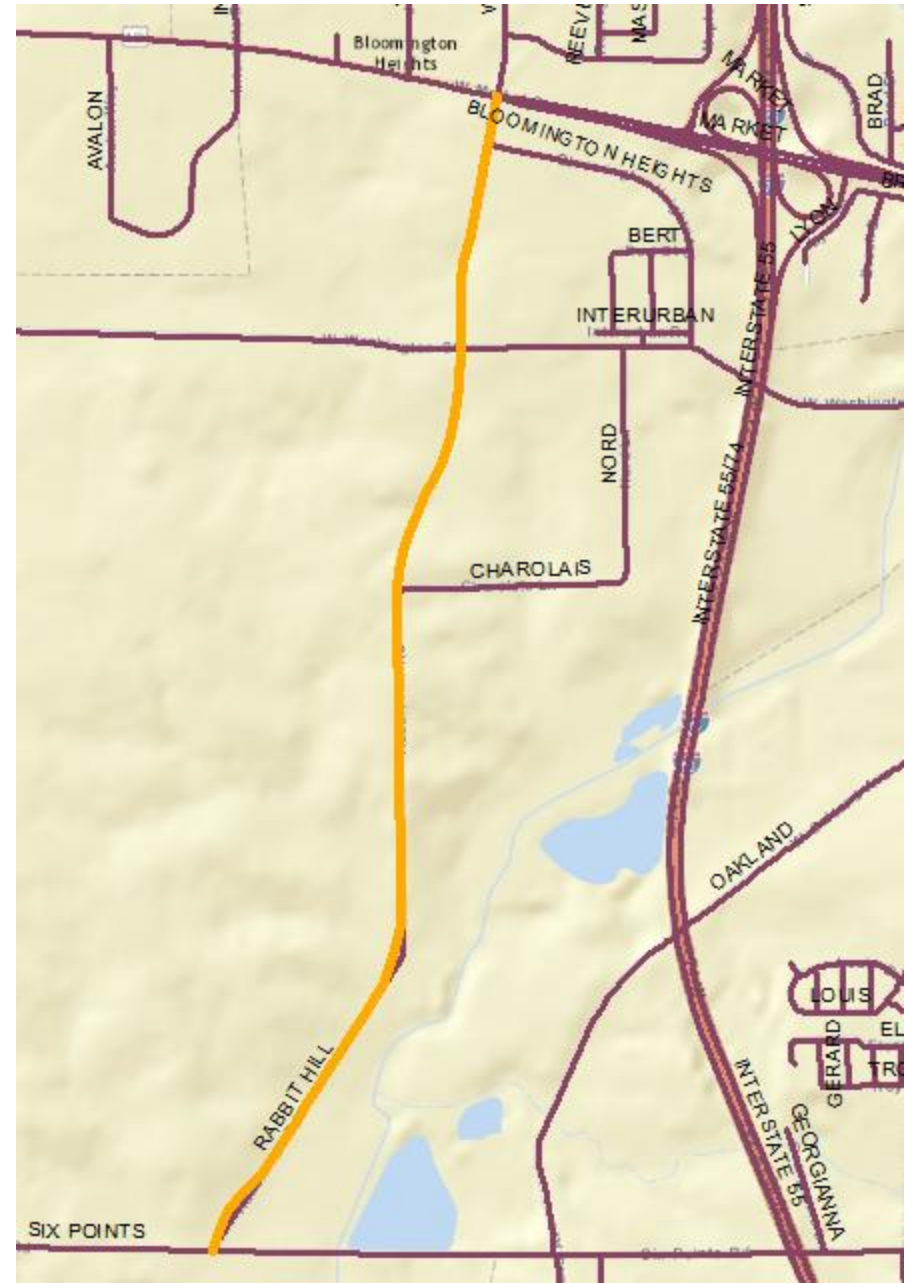
Euclid to Morris



Average Daily Traffic:
6,000 – 6,500 vehicles

Pavement Condition Ratings:
Euclid to Morris (Fair)
Railroad Crossings (New)

Wylie Road New Alignment



Resources

- IDOT published average daily **traffic counts** are available here:

<http://gettingaroundillinois.com/gai.htm?mt=aadt>

- City of Bloomington **pavement ratings** are available through the McLean County GIS Service here:

<http://www.mcgisweb.org/SilverlightViewer/Viewer.html?Viewer=pavement>