

PACE

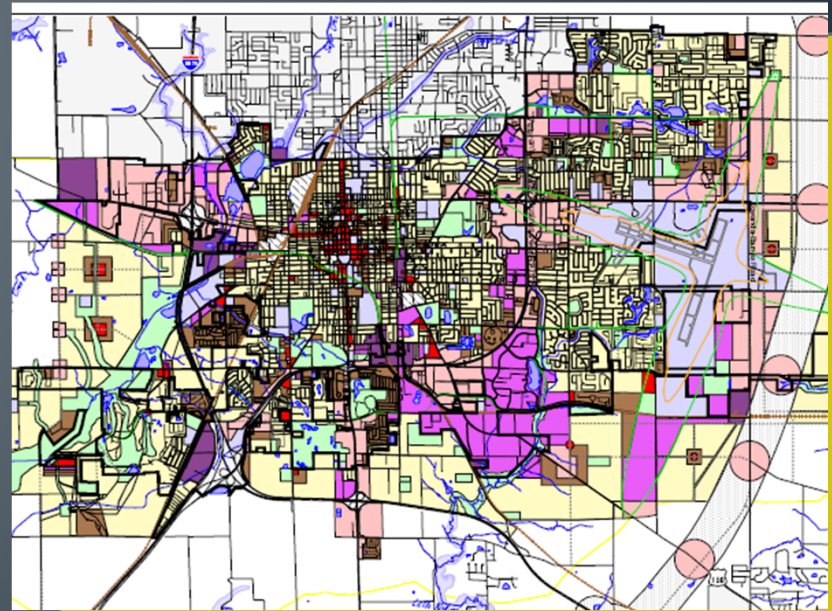
*Planning & Code Enforcement FY2015
Budget Highlights*

PACE Divisions

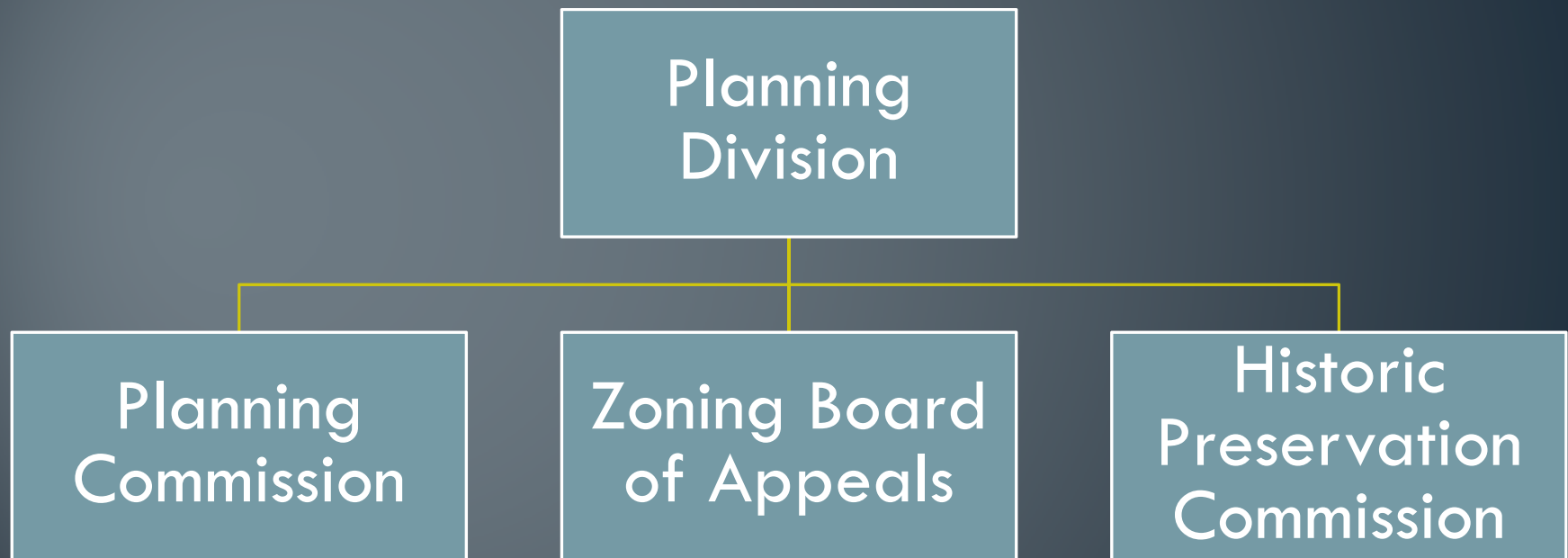


Planning

- Planning is responsible for providing the following services:
 - Zoning
 - Comprehensive Planning
 - Historical Preservation



Planning Hierarchy



Planning Manages

- 
- Subdivisions
 - Planned Developments
 - Rezoning

- Variances
- Property Usage
- Grant Requests

- Zoning Regulations (allowable uses, density, parking, building height, placement on a lot, etc.)

Planning Partnerships

Staff Planning & Land Development (SPALD) Meetings

West Bloomington
Revitalization Project

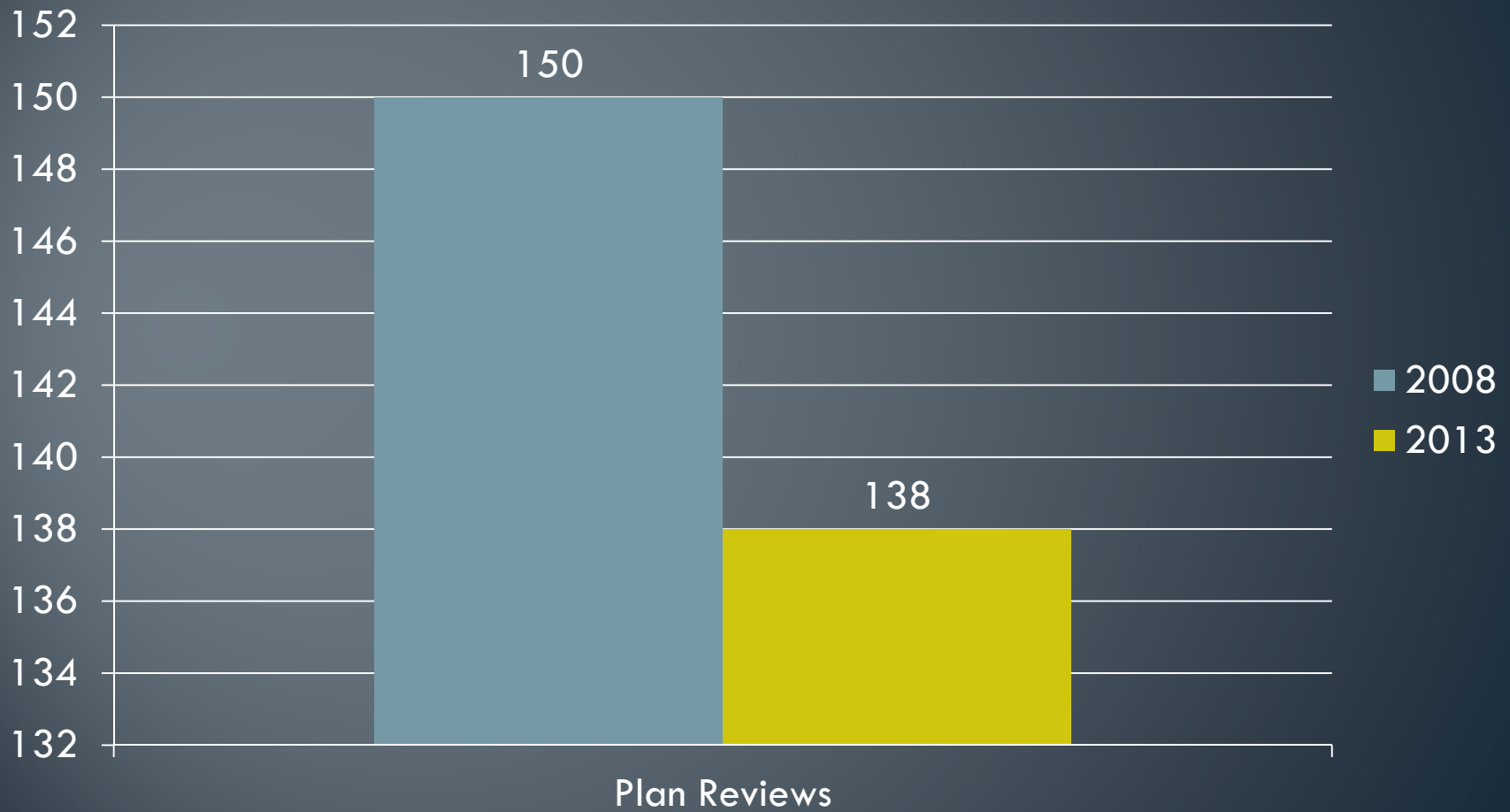
Economic
Development

McLean County
Regional Planning
Commission

Local & regional
organizations,
agencies &
associations

Downtown
Bloomington
Association

Planning Metrics – Plan Reviews



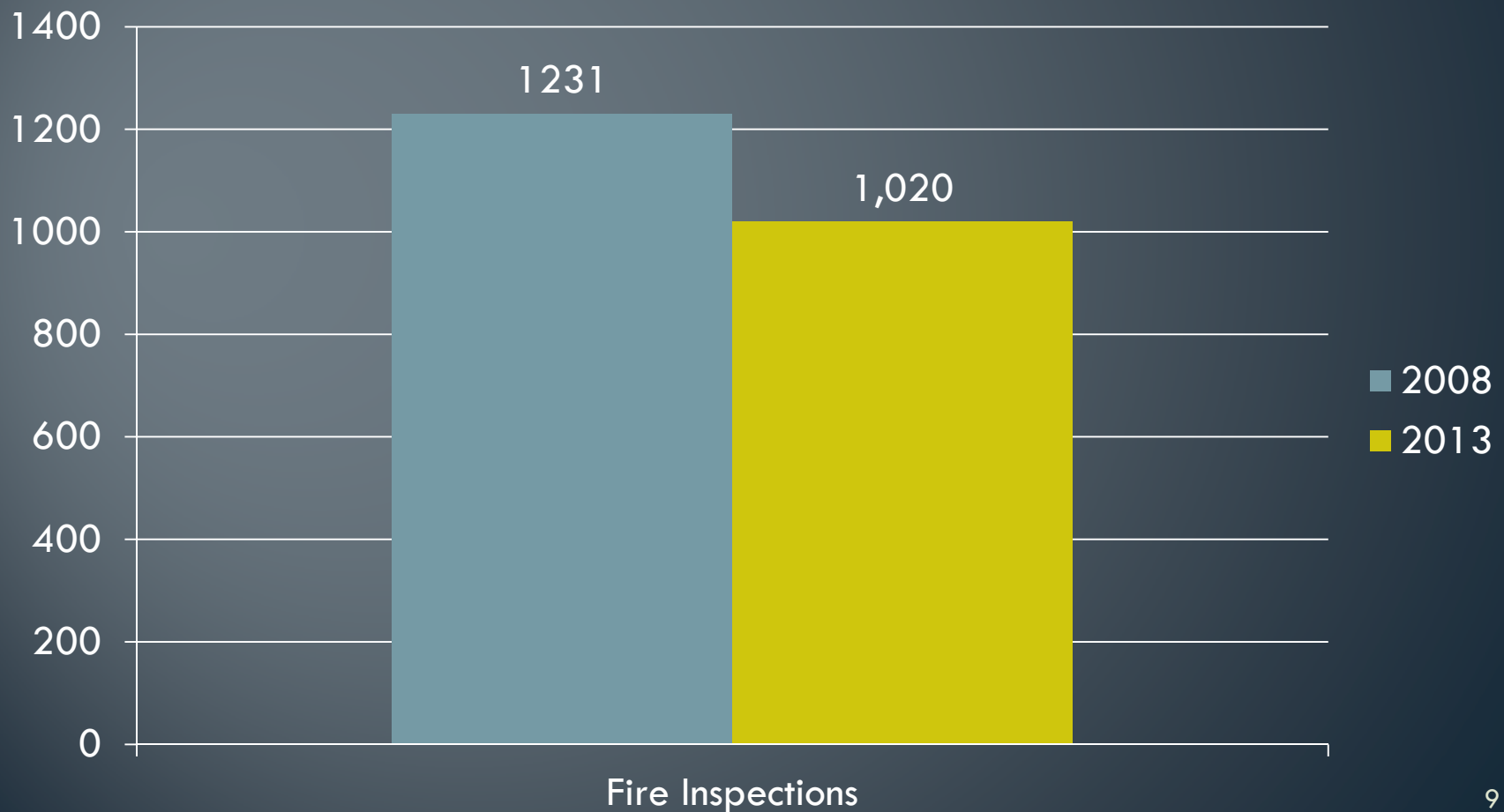
Code Enforcement

- Code Enforcement is responsible for providing the following services:
 - Property Maintenance
 - Rental Housing Inspections
 - CDBG Allocations



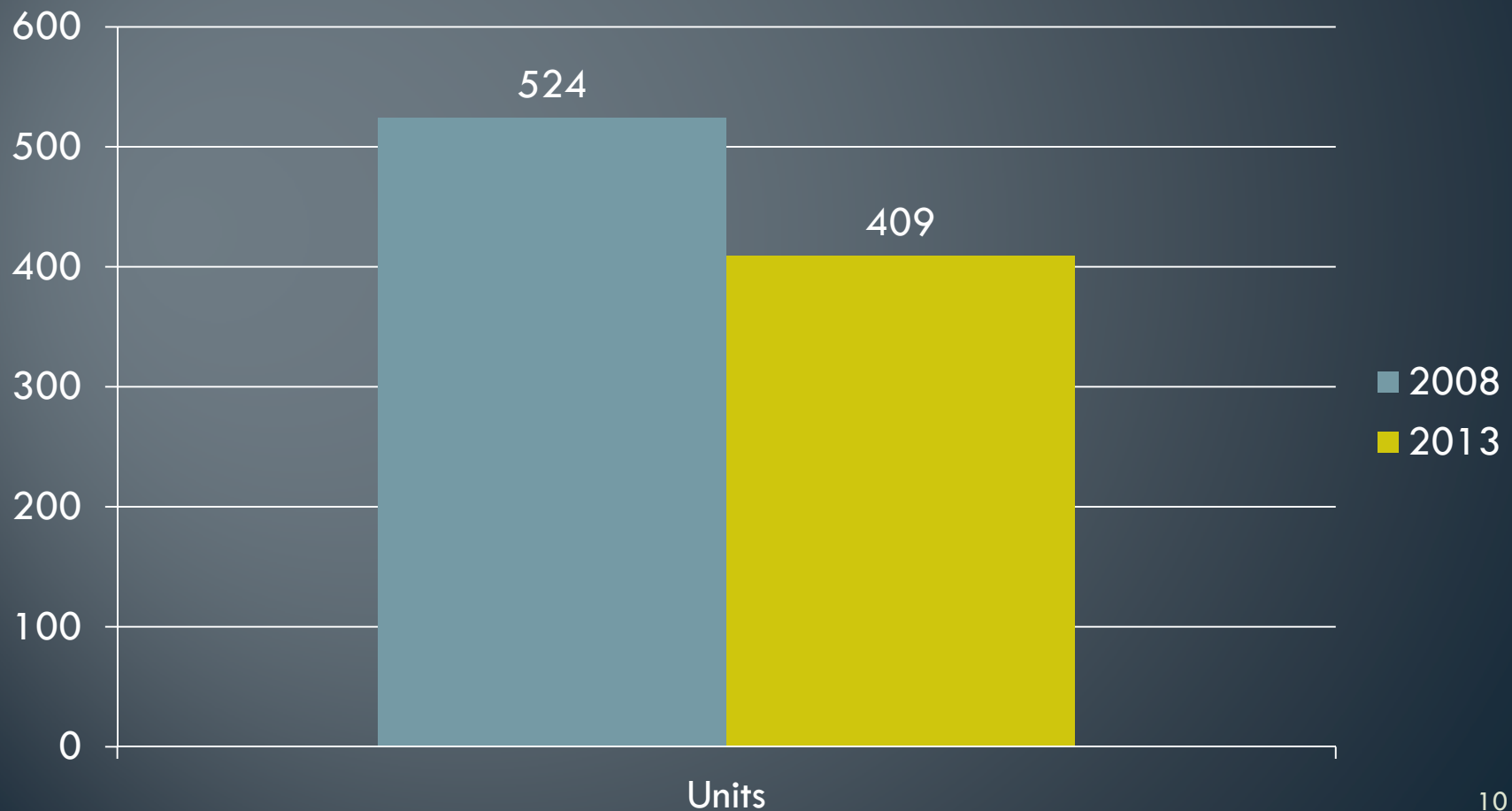
Code Enforcement Metrics – Fire Inspections

The City performs periodic fire inspections of all businesses to ensure compliance with applicable life safety codes.



Code Enforcement Metrics – Rental Units

The City performs periodic inspections of all rental units to ensure compliance with applicable life safety codes.



Making an **Impact** with CDBG

During the last four years, the **CDBG** area of PACE has:

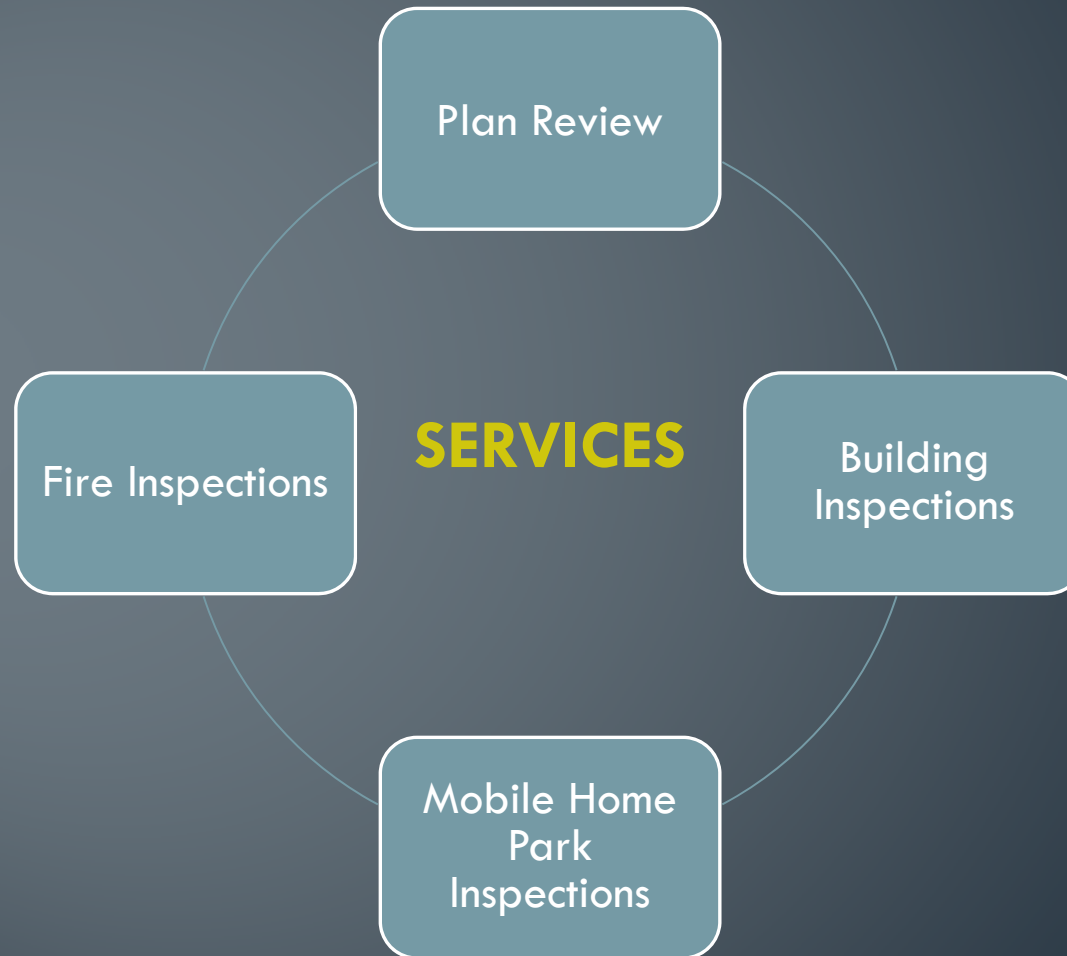
- Received **\$588,000** in IHDA funding for single family rehabilitation;
- Served as a pass through for more than **\$1.4 million** in Continuum of Care funding to assist services for the homeless and homeless prevention;
- Assisted in the rehabilitation of **149** housing units;
- Coordinated demolition of **17** dilapidated structures; **10** lots were transferred to Habitat for Humanity for construction of new single family homes;
- Expended **\$446,000** for infrastructure improvements (curbs, sidewalks, sewer improvements);
- Assisted **9** agencies through distribution of more than **\$2.3 million** in annual CDBG funds; and
- Collaborated with **8** different agencies for programs for homeless, families and children services

Facility Management

- Facility Management is responsible for providing services to the following facilities:
 - City Hall
 - 3 Parking Garages



Building Safety



Building Safety Manages

Plan Review

- New, expanded or renovated
- Commercial, industrial, residential, public assembly, retail and other uses

Business Inspections

- Retail, industrial, public assembly

Mobile Home Park Inspections

- Annual inspection to ensure compliance with applicable rules and requirements

Building Inspections

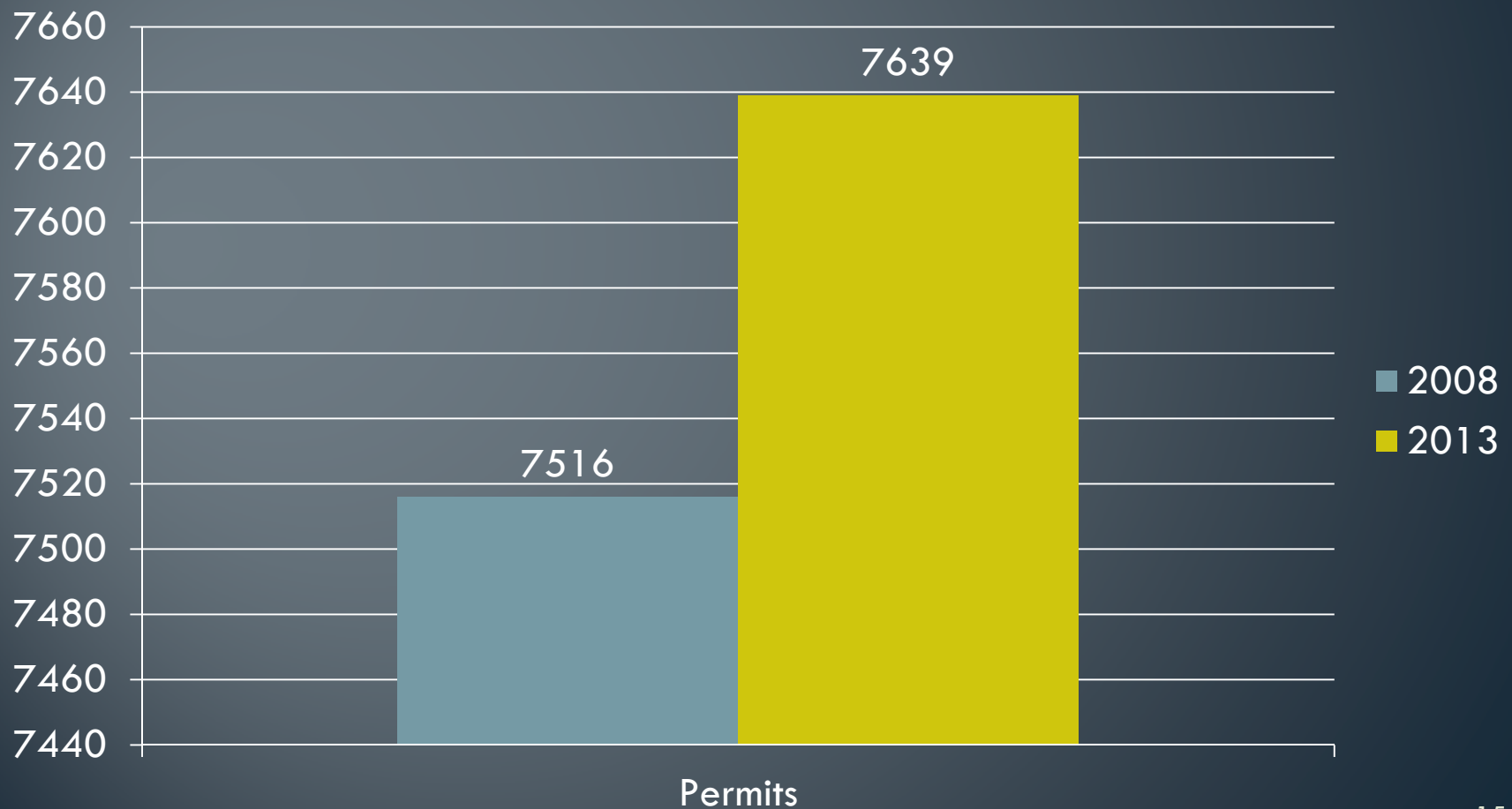
- All structural improvements
- Framing, HVAC, plumbing, electrical, mechanical equipment, roofing, and other building elements

Fire Inspections

- Fire suppression improvements
- Fire sprinkler systems

Building Safety Metrics - Permits

The Building Safety Division is responsible for life safety in all buildings.



Building Safety Metrics - Manpower

- 1 permit = minimum of **5** inspections
(new construction can have up to 15 inspections)
- And each inspection = 20 minutes
- Then PACE dedicates a minimum of **13,000** man hours to inspections each year

- If 1 employee works 1,920 hours each year
- Then PACE would need to dedicate a minimum of **6.7** employees to conduct inspections on a full time basis
- PACE currently employs **1.5** inspectors to carry this work load

PACE Metrics - Staff



PACE Provides for the Public Benefit

