

City of Bloomington

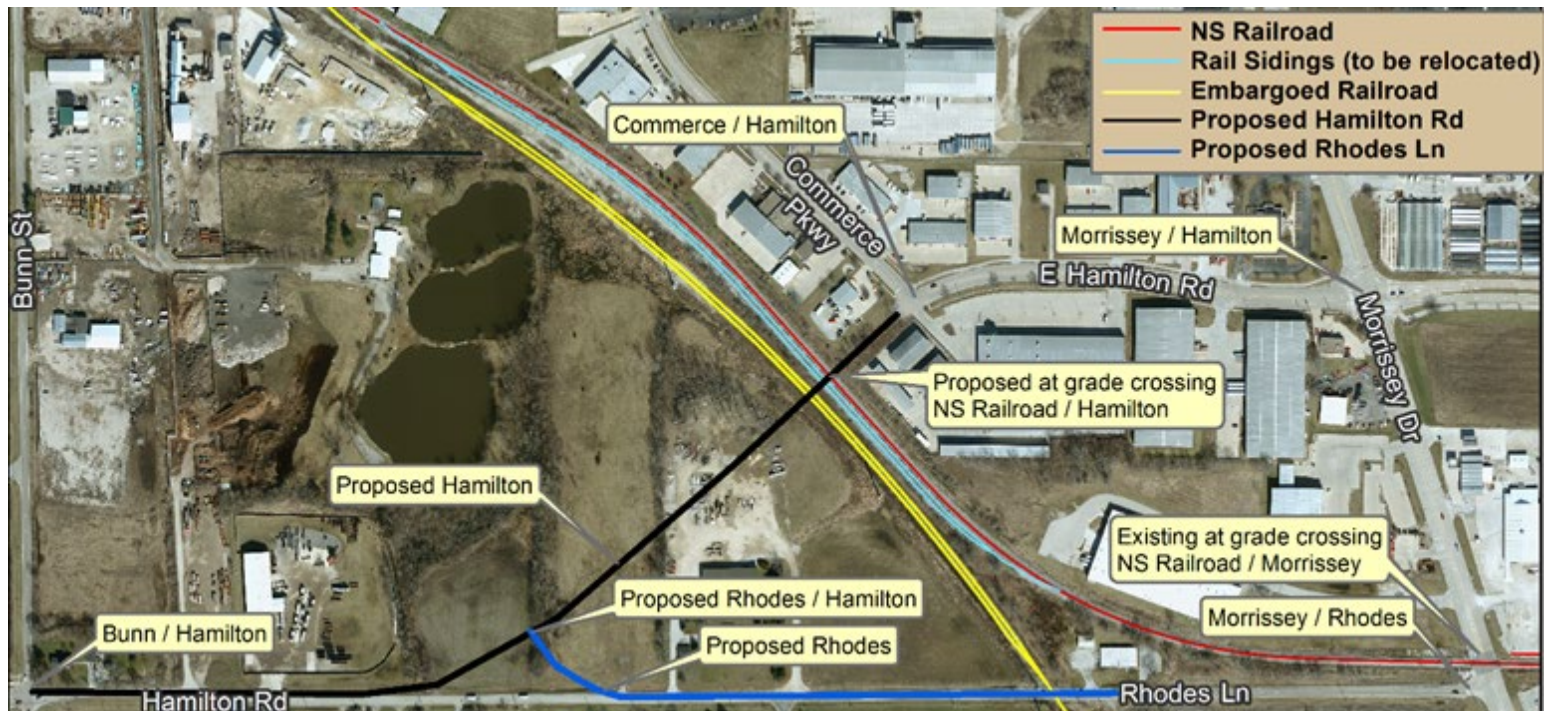
Upcoming Civil Engineering Projects



More information at: www.cityblm.org/publicworks

Hamilton Road East-West Connection

The final connection of a 7.2 mile east-west transportation corridor will include 3,000 linear feet of new roadway and 1,000 linear feet of roadway widening. The project will reduce vehicle emissions, provide safer, easier roadway travel, especially at the Morrissey Drive, Rhodes Lane, and Norfolk Southern Railway confluence, and reduce traffic loads on Interstate 55 Business (Veterans Parkway). In addition, the project will facilitate multimodal travel for all users. The project will allow bicycles and pedestrians access to the commercial areas east of the project by completing a Constitution Trail shared-use path along the corridor. It will also create the potential for more safe and efficient mass transit connections. Finally, the project will boost economic development opportunities in the project area, enhancing access to existing employers and sparking new development along the completed Hamilton Road corridor. Project cost is estimated at \$14.7 million. Construction is expected to start in 2023.



Constitution Trail Extension

The Constitution Trail is a popular rail-to-trail conversion dating back to 1986 that spans the City of Bloomington and Town of Normal. The project will extend the Constitution Trail from Lafayette Street to Hamilton Road where it will connect to existing and planned trails. The new multi-use path will connect access to work and recreation for lower income areas on the City's southeast side. This path extension is a cost-effective way to allow access across an existing pedestrian barrier (I-55 Business) and is included in multiple local and regional plans. The project will extend the Constitution Trail by approximately 4,700 linear feet and will connect users to Downtown Bloomington, parks, businesses, and residential areas in the west and south portions of the city that will provide a path separate from the roadway rather than just paved shoulders and sidewalk. Project cost is estimated at \$1.6 million.

Fox Creek Road & Bridge Improvements

Bridge and road replacement to remove existing road bottleneck by expanding the existing travel lanes from 2 to 5 lanes. The bridge is over the Union Pacific Railroad. Project includes two new sets of traffic signals at the intersections of Fox Creek Road at Danbury Drive and Beich Road as well as a new 10-foot-wide multi-use trail on the north side and a new sidewalk on the south side of the road. Project cost is estimated at \$12.6 million. Construction is expected to start in 2023.



Downtown Streetscape Project

Planning is underway to revisualize how downtown city streets can better serve existing businesses and the traveling public while staying true to the historic character of Downtown Bloomington. This project will result in a coordinated approach that will serve as a template for a massive series of separate construction projects projected that will occur over the next decade. The project will include enhance accessibility, walkability, and bikeability in the downtown. Streetscape enhancements could include green infrastructure, expansion of outdoor dining opportunities, gateways and identifiers, curb extensions to short pedestrian crossings, landscape buffer, public art, parklets, and event spaces. The first of many construction projects is expected to break ground in 2024.

