

SPORTS · ART · GOLF · ICE · ZOO
COOKING · CRAFTS & MORE!

Bloomington
Parks & Recreation

Fall Fun!



CITY OF
Bloomington ILLINOIS
PARKS & RECREATION

(309) 434-2260 · BLOOMINGTONPARKS.ORG

**SAVE THE DATES &
REGISTER EARLY!**

**TURKEY
TROT
NOV. 23**

**UGLIEST SWEATER RUN
& CANDY CANE DROP
DEC. 9**

REGISTER FOR FALL PROGRAMS, CLASSES, AND EVENTS AT BLOOMINGTONPARKS.ORG

**FALL BLOOMINGTON
RESIDENT REGISTRATION BEGINS AT 5:00 AM
WEDNESDAY, AUG. 23**

**FALL NON - RESIDENT
REGISTRATION BEGINS AT 5:00 AM
WEDNESDAY, AUG. 30**



**JOIN OUR
TEAM
FOR FALL FUN!**

**BLOOMINGTON'S
PARKS &
RECREATION
IS HIRING!**

For more details and to apply
BLOOMINGTONIL.GOV/JOBS
E/O/E

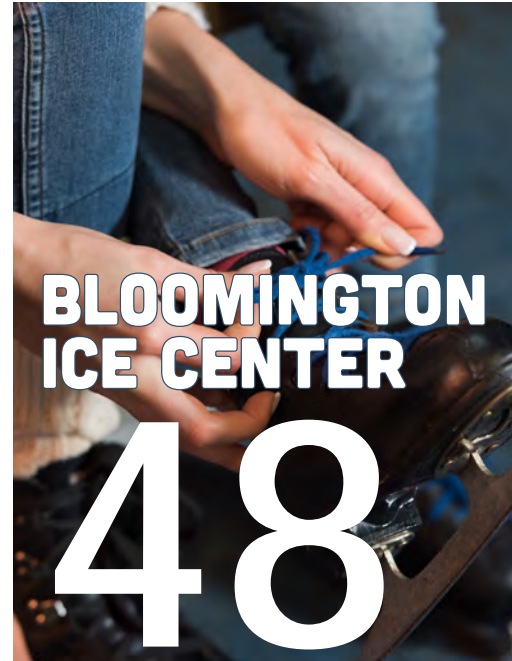
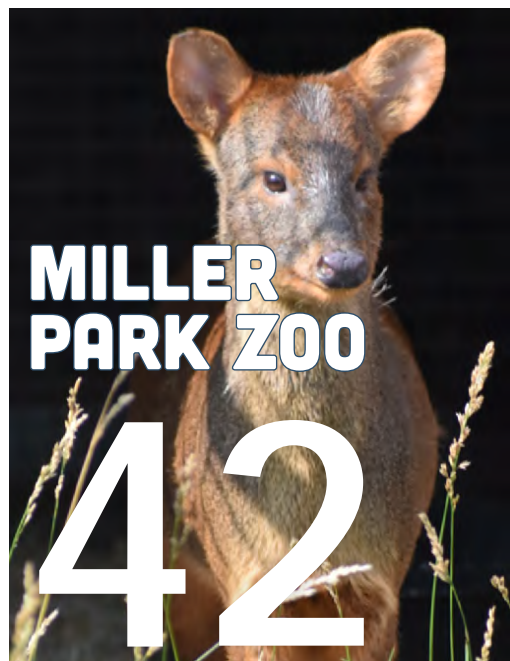
**QUESTIONS?
CALL OUR
MAIN OFFICE AT
(309) 434-2260**



QUICK PAGE REFERENCE



- GENERAL INFORMATION02
- YOUTH PROGRAMS13
- AFTER SCHOOL PROGRAMS ...13
- ZUMBA®17
- FALL TENNIS.....19
- SPECIAL INTEREST.....23
- ART CLASSES27
- OLDER ADULTS30
- GOLF40
- PARK SERVICES.....57
- REGISTRATION POLICY.....62



General Information

Mission Statement: Our mission is to enrich the quality of life for our community through parks, recreation and cultural arts.

Vision: Our vision is to provide for now and future generations a sense of community, preserved green space, diverse programs, excellent customer service and life changing experiences.

We Love Parents But: With your child's best interest in mind, parents are asked not to be in the classroom during programs. Our instructors always welcome the opportunity to discuss a participant's progress with parents at any time. Thank you for your cooperation.

Behavior Policy: Participants are expected to exhibit appropriate behavior at all times. The following guidelines have been developed to help make the Recreation Department safe and enjoyable for all participants. Participants shall: 1) show respect to all participants and staff; 2) refrain from using foul language; 3) refrain from causing bodily harm to another participant or staff; and 4) show respect for equipment, supplies and facilities. If participants are not able to exhibit appropriate behavior, or are distracting the teaching, they may be asked to leave the program.

Toilet Training Policy: Children enrolled in a Bloomington Parks & Recreation Department program for ages 3 and older must be toilet trained unless it is a parent/toddler class. Recreation Department programs stress the importance of children practicing their independence and we do not aid children in the bathroom. Our instructors are not responsible for diaper changing or toilet training. The Recreation Department reserves the right to deny participation by a child age 3 or older if they are not toilet trained.

Americans with Disabilities Act: We comply with the Americans with Disabilities Act (ADA) which prohibits discrimination on the basis of disability. We will make reasonable accommodations for individuals with disabilities who meet essential eligibility requirements for the desired program. Individuals with disabilities are encouraged to contact us at (309) 434-2260 regarding special accommodations needed for enjoyment of programs. Those who use telecommunications for the deaf (TTY) may reach the Recreation Department by calling our TTY number (309) 829-5115.

Sincere Appreciation: A great big "thank you" goes to the District 87, Unit 5 and Central Catholic High Schools for the use of school facilities. The extra time and energy from secretaries, custodians, teachers, and principals is greatly appreciated.

WEATHER SAFETY GUIDELINES FOR OUTDOOR RECREATION PROGRAMS

Cold/Snow/Sleet/Ice:

If the temperature is at or below 10 degrees with or without wind chill, outdoor activities may be cancelled. Every attempt will be made to maintain normal operations during extreme winter weather conditions. When the National Weather Service has issued travel warnings during the time period of a program, scheduled activities may be cancelled.

Make-Up Policy:

When applicable, efforts will be made to make up any cancelled programs and/or games with no guarantee(s).

Weather Related Communication:

- 1) Program Cancellations will be determined no earlier than 1 hour prior to the start of a program. If weather worsens less than 1 hour prior, cancellations can still be made with every effort to contact participants.
- 2) Special Event Cancellations will be determined no later than 3 hours prior to start. If weather worsens less than 3 hours prior, cancellations can still be made with every effort to contact participants.
- 3) Contractual programs, outside rentals, school sports, or groups using City recreation facilities are responsible for cancelling their own programs and notifying their participants.
- 4) Cancellations/Delays can be made on-site at the programs or events.

Updates will be posted in the following ways:

Social Media - Facebook ([facebook.com/cityblmBPARD](https://www.facebook.com/cityblmBPARD))

Weather Hotline - (309) 434-2386

Parks & Rec. Staff

Eric Veal.....Director
Mose Rickey.....Asst. Director
Katie Taylor.....Business Manager
Dave Lamb.....Supt. of Parks
Jason Wingate.....Supt. of Golf Operation
Jay Pratte.....Miller Park Zoo Director
Pearl Yusuf.....Miller Park Zoo General Curator
Matt Kurtz.....Golf Clubhouse Mgr.
Thom Rakestraw.....Marketing Mgr.
Marineth Sierra.....Marketing Analyst
Michael Hernbrott.....Bloomington Ice Center Mgr.
Lindsay Danner.....Bloomington Ice Center
Asst. Mgr./ Skating Director
Brian Ludy.....Bloomington Ice Center
Asst. Mgr./ Hockey Director
Holly Polley.....SOAR Program Mgr.
Taylor Burlingame.....SOAR Program Mgr.
Neal McKenry.....Athletics & Older Adult Program Mgr.
Jill Eichholz.....Teen/Youth Program Mgr.
Nicole Culbertson.....Aquatics/Sports/
Older Adults Program Mgr.
Julia Benzel.....Zoo Education Specialist
Stephanie Stone.....Office Manager

Bloomington City Council/Staff

Mboka Mwilambwe - Mayor
Jenna Kearns - 1st Ward
Donna Boelen - 2nd Ward
Sheila Montney - 3rd Ward
John Danenberger - 4th Ward
Nick Becker - 5th Ward
Cody Hendricks - 6th Ward
Mary "Mollie" Ward - 7th Ward
Kent Lee - 8th Ward
Tom Crumpler - 9th Ward
Tim Gleason - City Manager
Billy Tyus - Deputy City Manager
Jeff Jurgens - Deputy City Manager

Photo/Video Policy...

The Parks & Recreation staff takes photos and video of participants enrolled in our programs, classes, at events, or on park property. These photos or videos may be used in our brochures, social media, advertising, or other publications. If you do not wish to be in a video or have your photo taken, please tell our photographers.



Important Phone Numbers

**City of Bloomington
Parks & Recreation Main Office**
109 E. Olive St. (309) 434-2260
Fax # (309) 434-2483

Parks & Recreation HOTLINE
(309) 434-2FUN (2386)

Forrest Park Maintenance Building
1813 Springfield Rd. - (309) 434-2280

Highland Park Golf Course
1613 S. Main St. - (309) 434-2200

Lincoln Leisure Center
1206 S. Lee St. - (309) 434-2819

Miller Park Pavilion
1122 S. Morris Ave. - (309) 434-2255

Miller Park Zoo
1020 S. Morris Ave. - (309) 434-2250

Bloomington Ice Center
201 S. Roosevelt Ave. - (309) 434-2737

Prairie Vista Golf Course
502 W. Hamilton Rd. - (309) 434-2217

The Den at Fox Creek Golf Course
3002 Fox Creek Rd. - (309) 434-2300

TTY (309) 829-5115
Monday - Friday, 8:00 AM - 5:00 PM

Holiday Closings

The Parks & Recreation main offices will be closed
Monday, September 4, Friday, November 10,
Thursday, November 23, Friday, November 24, and
Monday, December 25, Tuesday, December 26
Friday, Dec. 29th (afternoon) and Monday, January 1, 2024

FACILITY RENTALS

Bloomington Parks & Recreation Facility Rentals

You may request a facility rental online at BloomingtonParks.org or call our main office at (309) 434-2260 for more information.



Miller Park Pavilion

This historic landmark was restored in 1977 and is a premier Bloomington/Normal rental facility for weddings, receptions and more. The Miller Park Pavilion has three floors, rambling porches, chandelier lighting and an unique design. Rental options include: Main Level - hardwood floor with floor-to-ceiling windows overlooking Miller Park Lake, 1/2 of Main Level - partitions divide the main level into two smaller areas, Upper Level - a carpeted meeting room, and the East Porch - an outside area protected from the elements by an overhead balcony. Miller Park Pavilion Rental Rates and Policy & Procedures are available online or by contacting the Administrative Office at (309) 434-2260. Alcohol will not be considered from April 1st to October 31st. For information on availability or if you wish to see the facility, call (309) 434-2260.



Hike Haven

Hike Haven is the perfect rustic spot for birthday parties, family gatherings and more. Located on Lake Drive in Forrest Park, the former Girl Scout Cabin will welcome you to a nature like setting. Several doors and windows open to allow a nice breeze through the facility and out onto the covered back porch. Hike Haven is fully accessible. For information on availability call (309) 434-2260.

Lincoln Leisure Center

Once an elementary school, this two-story building consists of a gymnasium and nine classrooms. Recreation programs are offered on a daily basis. Rental opportunities are available to the public after recreation programs have been scheduled. There are 2 classrooms on the 2nd floor and the gym available for rental. Prices are double if the building is closed due to no other programs being held. For information on availability or if you wish to see the facility, call (309) 434-2260.



Tipton Park Shelters

There are two large shelters in Tipton Park which may be reserved. The shelter off Stone Mountain Blvd. and the shelter off GE Rd. Run/Walks can be at either shelter. Call (309) 434-2260 for more information.



White Oak Community Room

This facility located in White Oak Park includes a small meeting room that is available for rent. For information on availability call (309) 434-2260.



Miller Park Adult Center

Located in the lower level of Miller Park Pavilion is the Miller Park Adult Center. This indoor facility is the perfect location for birthday parties, family gathering, showers, meetings, and much more. Facility contains a full kitchen, common area with TV, open floor plan, restrooms, and lake front views. Call (309) 434-2260 for more information.

To learn more about renting space at these facilities go online to **BloomingtonParks.org** or call the number listed.



**BCPA, Grossinger Motors Arena
and Creativity Center**
(309) 434-2782

From civic events to wedding receptions the BCPA continues to be utilized as a popular community venue for fundraising, meetings, and social functions. The Arena and the Creativity Center also have space for your club or organization to meet. For more information please call the Rental Manager at (309) 434-2782.



The Den Palmer Room
(309) 434-2300

Enjoy the beautiful banquet room overlooking The Den Golf Course for your meeting or family get together. The renter is responsible for room arrangement and clean-up afterwards. Rental time includes set-up and take down. Banquet/Meeting Room: Seating 168. Open year-round.

Bloomington Ice Center
(309) 434-2737

Bloomington Ice Center features a 200' x 85' sheet of ice and a party room for birthdays or small meetings. The ice may be rented for groups or practices at times it's not being used for Bloomington Ice programs. Birthday parties or small meetings may be scheduled in the meeting room. Call (309) 434-2737 for more information.



Miller Park Zoo
(309) 434-2250

Rent Out the Zoo! Treat your employees or other special group to a one of a kind after hours experience at the Zoo. Various packages are available, and can be customized to meet your needs. Miller Park Zoo offers two Birthday Party options (*suitable for all ages*). Visit us at MillerParkZoo.org or contact us at (309) 434-2250 for additional information.



**CLASSES AND
PROGRAMS CAN
FILL UP FAST!**

**MAKE SURE TO REGISTER
EARLY FOR ALL YOUR
FAVORITES!**

[BLOOMINGTONPARKS.ORG](http://BloomingtonParks.org)

COMMUNITY EVENTS



Miller Park Adult Center Breakfast & Bingo

Beck Memorial Home and Bloomington Parks & Recreation present FREE Community Breakfast & Bingo! Senior Adults Age 55+ (with ticket) will enjoy free coffee, juice, fruit, doughnuts, and the opportunity to play 4 FREE Bingo Games with escalating cash prizes, plus a drawing that will be held at the end of the event with a prize awarded to one ticketed guest. Must have ticket to attend.

FREE tickets are available from Aug. 15th - Sept. 18th (while supplies last) to adults Ages 55+ on a first-come, first-served basis and can be picked up at: Beck Memorial Home, Miller Park Adult Center, or the City of Bloomington - The Hub.

Day..... Date..... Time..... Location..... Fee
Tu September 19..... 10:00 AM - 11:30 AM Miller Park Pavilion, Main Level..... FREE

Family Pumpkin Fun

Learn some new carving techniques! Instructors will provide some step by step directions for adult and child to create their pumpkin masterpiece. All supplies provided. We will have a fire roaring and s'mores supplies available once the carving is complete. One adult per child please.

Ages: 5 - 14
Sun., Oct. 22nd
2:00 PM - 3:30 PM
Hike Haven
Fee: \$30 for adult / child





Paint with Mary Jo - Dragon

Participants will create your very own canvas painting to take home with you. Follow along with step by step instructions. We will provide all the supplies and take care of clean-up. Children will participate independent of an adult. Instructor: Mary Jo Johnson, IOAA

Ages: 8 and older

Sun., Nov. 5

1:30 PM - 3:00 PM

Lincoln Leisure Center

Fee: \$25 per participant



Paint with Me - Fox

Together you will create your very own canvas painting to take home with you.

Follow along with step by step instructions. We will provide all the supplies and take care of clean-up.

Instructor: Mary Jo Johnson, IOAA

Ages: 4 - 12

Sun., Dec. 17

1:30 PM - 3:30 PM

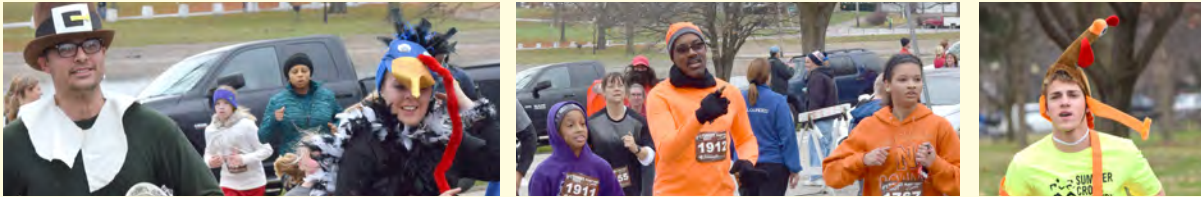
Miller Park Pavilion

Fee: \$35 for adult / child

\$20 for additional child



45TH ANNUAL • FREE TURKEY TROT THANKSGIVING DAY • NOV. 23RD



Join us, along with our wonderful partner, Fleet Feet Bloomington, as the race happens rain, snow, or shine on Thanksgiving Day, Nov. 23rd

Online registration will be available at <https://runsignup.com/Race/IL/Bloomington/MillerParkTurkeyTrot>

Online registration begins September 1st.

Online registration is preferred. Registering online gives one priority in terms of ordering a Turkey Trot 2023 shirt.

Only online registrants will be eligible for the variety of raffle prizes.

On site registration will be available outside of Miller Park Pavilion beginning at 8:00 AM.

(though online registration is strongly encouraged).

This event is not timed and awards are not given. Registration (whether online or onsite) is FREE. Sign in begins at 8:00 AM in front of Miller Park Pavilion with races beginning as early as 9:00 AM

We will be collecting non-perishable food items to benefit Home Sweet Home Ministries.

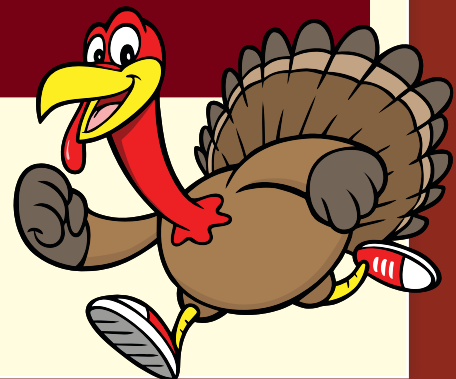
KIDS HALF MILE RUN begins at 9:00 AM

THREE MILE RUN begins approx. 9:15 AM

ONE-AND-A-HALF MILE WALK begins approx. 9:30 AM

FAMILY-FRIENDLY EVENT TO KICKSTART YOUR HOLIDAY FEAST!

(309) 434-2260 • BLOOMINGTONPARKS.ORG



**WE ARE LOOKING FOR VOLUNTEERS! WANT TO
BE A ROUTE MONITOR OR HELP PEOPLE CHECK IN?**

**CONTACT NEAL AT
NMCKENRY@CITYBLM.ORG**



CANDY CANE DROP

Santa will be taking a ride with our forestry crew in one of the boom lift trucks and dropping candy canes for the kids to pick up!

Adults will need to remain with their children through the entire event. All participants will get a chance to visit Santa when he comes back down to the ground!

Check in at 10:00 AM. We will do the drop promptly at 10:15 AM. Pre-registration is required. This is an ALL outdoor event.

Sat., Dec. 9th at 10:15 AM • Ages 3-12 (with an adult)
\$12 PER CHILD

Miller Park - check in at 10:00 AM outside the main entrance of Miller Park Pavilion

BloomingtonParks.org • (309) 434-2260 with any questions.



10TH ANNUAL!

UGLIEST SWEATER RUN

Put on your best holiday cheer and come out to Miller Park for the **10th Annual Ugliest Sweater Run** with Bloomington Parks & Rec, and Fleet Feet Bloomington.

There will be a 3 mile non-competitive run or walk, with prizes awarded for special sweater categories.

Stop on the route at the selfie stations for pictures and add your best Ugly Sweater picture to the event page.
<http://www.fleetfeetbloomington.com/races/ugliest-sweater-run>.

All Ages • Miller Park • Bloomington, Illinois



SAT., DEC. 9TH • 1:00 PM • MILLER PARK

**JOIN OUR
TEAM**



Scan the code with your smartphone to learn more!



CITY OF
Bloomington
ILLINOIS

PARKS & RECREATION

IS HIRING, GO ONLINE TO BLOOMINGTONIL.GOV/JOBS FOR DETAILS.



SPORTS/ FITNESS



In the Zone: Volleyball Camp - *NEW*

This 8-week program will get players to focus on developing the foundation skills of volleyball. This camp is offered to 2nd through 7th grade boys and girls in a recreational setting. Players will have the chance to learn about fair play, volleyball skills, teamwork, and sportsmanship. Practices will focus on basic skill development and will progress to more advanced concepts as skill level increases.

The first four weeks of classes will focus on the fundamental skills with drills, weeks 5 - 7 will be 20-minutes of practice and 40-minutes of scrimmage, and the last week of camp will be two 30-minute games. This is an instructional program and not a league.

Location: Pepper Ridge Elementary School, Gym
Fee: \$49 (no class 10/18)

AgesDay ..Date Time
2nd - 3rd Graders... W Sept. 20 - Nov. 15....5:30 PM - 6:30 PM
4th - 5th Graders W Sept. 20 - Nov. 15....6:30 PM - 7:30 PM
6th - 7th Graders W Sept. 20 - Nov. 15....7:30 PM - 8:30 PM

In the Zone: Basketball Camp - *NEW*

This 8-week program will get players focusing on developing the foundation skills of basketball. This camp is offered to 2nd through 7th grade boys and girls in a recreational setting. Players will have the chance to learn about fair play, basketball skills, teamwork, and sportsmanship. Practices will focus on basic skill development and will progress to more advanced concepts as skill level increases.

The first four weeks of classes will focus on the fundamental skills with drills, weeks 5 - 7 will be 20-minutes of practice and 40-minutes of scrimmage, and the last week of camp will be two 30-minute games. This is an instructional program and not a league.

Location: Pepper Ridge Elementary School, Gym
Fee: \$49

Ages DayDate..... Time
2nd - 3rd Graders..... W..... Jan. 17 - Mar. 6....5:30 PM - 6:30 PM
4th - 5th Graders..... W..... Jan. 17 - Mar. 6....6:30 PM - 7:30 PM
6th - 7th Graders..... W..... Jan. 17 - Mar. 6....7:30 PM - 8:30 PM

Youth Soccer Clinic

Athletes will develop essential soccer skills such as dribbling, passing, shooting and defense on a more individual level. The class will progress into small games and players will have the opportunity to scrimmage on the last day of class. This is an instructional class only; no games will be played. Registration is currently OPEN.

Location: Rollingbrook Park, Soccer Field

Fee: \$35

Ages Day Date Time
 4 - 6 W Sept. 13 - Oct. 11 5:00 PM - 5:45 PM
 7 - 10 W Sept. 13 - Oct. 11 6:00 PM - 6:45 PM



Run Club

Runners of all levels have the opportunity to train and build their endurance. We will supply workouts, games, and technique training to help you enjoy running while working towards a goal. The first day of class all runners should arrive on time, we will assess the runners' abilities and divide into groups. Registration is currently OPEN.

Location: Tipton Park, North Shelter

Fee: \$30

Ages Day Date Time
 7 - 12 M Sept. 11 - Oct. 9 5:30 PM - 6:30 PM

Sporty Parent & Child

Parents now is your chance to get your preschooler moving! Have your mini athlete get active while trying a variety of sports including basketball, soccer, floor hockey and so much more. While we will emphasize on physical activity, this program encourages the growth of fine and gross motor skills and introduce players to teamwork. Some classes could be held outdoors.

Location: Pepper Ridge Elementary School, Gym

Fee: \$35 (no class 10/9)

Ages Day Date Time
 2 - 3.5 years; w/adult... M Sept. 18 - Oct. 23 ... 5:30 PM - 6:15 PM

Sporty Munchkins

Each class participants will get the opportunity to learn the fundamentals of a different sport including soccer, basketball, t-ball and much more. This program inspires players to develop sportsmanship in a positive fun environment along with the development of fine and gross motor skills. Some classes could be held outdoors.

Location: Pepper Ridge Elementary School, Gym

Fee: \$35 (no class 10/9)

Ages Day Date Time
 3 - 5 M Sept. 18 - Oct. 23 6:25 PM - 7:10 PM
 3 - 5 M Nov. 13 - Dec. 11 5:30 PM - 6:15 PM

Sporty Kiddos

Has your child shown interest in sports but unsure which sport to follow? Let us get your child up and moving while exploring different sports. Each class we will focus on the fundamentals of a different sport and will have the opportunity to play each sport in a non-competitive game.

Location: Pepper Ridge Elementary School, Gym

Fee: \$35

Ages Day Date Time
 6 - 9 M Nov. 13 - Dec. 11 6:25 PM - 7:10 PM



FUNDamental T-Ball

Players learn the foundation skills of the sport that will help prepare them for baseball. The emphasis is on fun, basic instruction, and equal participation. Players will get a chance to learn hitting, catching, fielding and much more. Players should bring their own glove to classes.

Location: Suburban East Park, Ballfield

Fee: \$28

Registration is currently OPEN.

Ages Day Date Time
 3 Th Sept. 14 - Oct. 5 4:30 PM - 5:00 PM
 4 - 5 Th Sept. 14 - Oct. 5 5:10 PM - 5:40 PM
 6 - 8 Th Sept. 14 - Oct. 5 5:50 PM - 6:20 PM

Location: Oakland Elementary School, Gym

Ages Day Date Time
 3 W Oct. 11 - Nov. 1 5:15 PM - 5:45 PM
 4 - 5 W Oct. 11 - Nov. 1 5:55 PM - 6:25 PM
 6 - 8 W Oct. 11 - Nov. 1 6:35 PM - 7:05 PM



FUNDamental Soccer

Players will be introduced to the basic skills in an activities and games class setting. Players will get a chance to learn skills such as kicking, passing, and shooting, necessary for participants in this high endurance sport.

Location: Stevenson Elementary School, Gym
Fee: \$28

Ages	Day	Date	Time
3	Th	Oct. 12 - Nov. 2	5:15 PM - 5:45 PM
4 - 5	Th	Oct. 12 - Nov. 2	5:55 PM - 6:25 PM
6 - 8	Th	Oct. 12 - Nov. 2	6:35 PM - 7:05 PM



FUNDamental Football

Players will get to be introduced to the basic skills of football in a fun learning environment. Throwing, passing, and catching are just a few of the skills players will learn in fun drills and activities.

Location: Washington Elementary School, Gym
Fee: \$28

Ages	Day	Date	Time
5 - 6	W	Oct. 30 - Nov. 20	5:15 PM - 5:45 PM
7 - 8	W	Oct. 30 - Nov. 20	5:55 PM - 6:25 PM
9 - 11	W	Oct. 30 - Nov. 20	6:35 PM - 7:05 PM



FUNDamental Basketball

Players will enhance their basketball knowledge and skills! Utilizing fun drills and games, players will develop basic basketball skills such as passing, dribbling, shooting, and defense.

Location: Clearwater Park, Basketball Courts
Fee: \$28

Registration is currently OPEN.

Ages	Day	Date	Time
3	Tu	Sept. 12 - Oct. 3	4:30 PM - 5:00 PM
4 - 5	Tu	Sept. 12 - Oct. 3	5:10 PM - 5:40 PM
6 - 8	Tu	Sept. 12 - Oct. 3	5:50 PM - 6:20 PM

Location:
 Stevenson Elementary School, Gym (no class 11/23)

Ages	Day	Date	Time
3	Th	Nov. 9 - Dec. 7	5:15 PM - 5:45 PM
4 - 5	Th	Nov. 9 - Dec. 7	5:55 PM - 6:25 PM
6 - 8	Th	Nov. 9 - Dec. 7	6:35 PM - 7:05 PM



FUNDamental Hockey

Players will be introduced to basic hockey and skating skills utilizing fun games. Players will learn basic skating, shooting, passing, and SCORING!

*Players will need to bring a hoodie, sweatpants and hockey or winter gloves. Skates, helmets, and sticks will be available to borrow for the ice time.

Location: Bloomington Ice Center
Fee: \$45

Ages	Day	Dates	Time
3 - 5	Sat	9/9 - 9/23	10:00 AM - 10:40 AM
6 - 10	Sat	9/9 - 9/23	10:00 AM - 10:40 AM



YOUTH DANCE

Whether you'd like to introduce your little one to the exciting world of dance, or want to encourage and enhance their dance skills, you're sure to find the class that is just the right fit! Join us and staff of the Next Step Dance Studio for an 11-week program that is capped off with an end of season **Winter Showcase on December 15th**. There will be no costume fee for the Winter Showcase, but there will be a small "performance viewing" fee (more info regarding that will be provided by NSDS as we approach the Showcase.)

Each class provides a great opportunity for your dancer to strengthen their coordination and balance, enhance creativity and freedom of expression, gain confidence, and enjoy a social and friendly environment. Please see attached class schedule for dates, times, and pricing.

All classes are led by instructors of the Next Step Dance Studio. The Next Step Dance Studio has been serving the Bloomington/Normal and surrounding areas since 2009. The NSDS staff believes in providing fun and educational classes for all ages and levels. Each child will be given personalized attention and proper instruction while being provided with a nurturing environment for growth. Next Step Dance Studio believes in family and unconditional support for everyone who chooses to call the studio home.

Class	Age(s)	Day	Time	Room	Session Dates*	Fee**
Princess Ballet	Age 3	Tuesday	4:30 PM - 5:00 PM	LLC - 207	9/26 - 12/12 (no class 10/31 & 11/21)	\$75
Bitty Ballerinas	Ages 4 & 5	Tuesday	5:00 PM - 5:30 PM	LLC - 207	9/26 - 12/12 (no class 10/31 & 11/21)	\$75
Hippity Hop	Ages 3 & 4	Tuesday	5:45 PM - 6:15 PM	LLC - 207	9/26 - 12/12 (no class 10/31 & 11/21)	\$75
Combo 1	Ages 5 & 6	Tuesday	6:15 PM - 7:00 PM	LLC - 207	9/26 - 12/12 (no class 10/31 & 11/21)	\$95
Tappin Tutu's	Ages 3 & 4	Wednesday	4:30 PM - 5:00 PM	LLC - 207	9/27 - 12/13 (no class 11/22)	\$75
Beginner Hip Hop	Ages 5 - 7	Wednesday	5:00 PM - 5:45 PM	LLC - 207	9/27 - 12/13 (no class 11/22)	\$95
Ballet/Jazz Combo	Ages 6 - 9	Wednesday	6:00 PM - 6:45 PM	LLC - 207	9/27 - 12/13 (no class 11/22)	\$95
Bitty Ballerinas	Ages 4 & 5	Thursday	4:30 PM - 5:00 PM	LLC - 207	9/28 - 12/14 (no class 11/23)	\$75
Tiny Dancers	18m - 2yr	Thursday	5:00 PM - 5:30 PM	LLC - 207	9/28 - 12/14 (no class 11/23)	\$75
Beginner Hip Hop	Ages 8 - 10	Thursday	5:45 PM - 6:30 PM	LLC - 207	9/28 - 12/14 (no class 11/23)	\$95

*Winter Showcase will be Friday, 12/15 for all. **No Costume Fee for Winter Showcase.

Tiny Dancers (18m - 2yr)

An intro to dance and is designed for the very young dancer. Creative movement and activities help introduce the beginning fundamentals of ballet, jazz, & tap (dancers will not wear tap shoes). Students will also play games which enhance cognitive and social development and learn classroom etiquette. Parent will love participating as they assist in developing their "tiny" dancer. Dancers should wear a leotard and preferably tights (skirts and tutu's are optional). Required shoes: any color ballet shoe.

Princess Ballet (3yr) & Bitty Ballerinas (4yr- 5yr)

These introductory classes will teach dancers the basic technique of Ballet. Dancers will learn leaps, turns, and more. Following a traditional Ballet class format, we will begin developing alignment and articulation at the barre, combinations across the floor, and center of the room footwork. Dancers may wear a leotard and preferably tights, skirts are allowed. Required shoes: any color ballet shoe.

Tappin Tutus (3yr - 4yr) This energetic and exciting class is designed to provide young dancers an introduction into the fundamentals of Ballet and Tap dance. Creative movement will help enhance your child's motor, listening, and social skills. All dancers may wear a leotard and preferably tights, skirts & tutus are allowed. Required shoes: any color ballet shoe.

Hippity Hop (3yr - 4yr)

This fun introductory class will teach dancers to move their body in different ways other than Ballet, Tap, and Jazz. This class will include turns and jumps, along with starting to focus on overall flexibility. The class will also allow you to focus on the basic necessary moves used in Hip Hop. All dancers should wear fitted clothing. No experience necessary. Required shoes: clean tennis shoes.

Combo 1 (5yr - 6yr)

Class is a combination of Ballet, Tap, and Creative Movement basics. It is a great introduction to beginner Ballet technique and learning rhythm, tempo, and musicality in Tap.

Dancers will also work on building coordination and motor skills. Dancers may wear a leotard and preferably tights (skirts and tutus are optional). Required shoes: Any color ballet and tap shoe.

YOUTH DANCE



Beginner Hip Hop (5yr - 7yr & 8yr - 10yr)

Dancers in Beginning Hip Hop will learn all of the basic dance skills such as keeping rhythm, following choreography and developing body control, as well as performance skills such as stage presence, acting, and improvisation are taught through kid-friendly Hip Hop & Funk style music and movement. In these highly popular classes, we also play games and even hold occasional contests to create a fun and motivating learning environment for your child. No necessary experience needed to register for this class. Required shoes: clean tennis shoes.

Ballet/Jazz Combo (6yr - 9yr)

This class is appropriate for students with little to no Ballet/Jazz training. Following a traditional Ballet/Jazz class format, we will begin developing alignment and articulation at the barre, combinations across the floor, and center of the room footwork. Dancers may wear a leotard and tights (footless or convertible tights recommended - no shoes will be worn for jazz). Required shoes: any color ballet shoe.



ZUMBA®

Perfect for everybody and every body! This 9-week, 60-minute class is a total workout, combining all elements of fitness - cardio, muscle conditioning, balance and flexibility. YOU get boosted energy and a serious dose of awesome each time you leave class. Zumba® takes the “work” out of workout by mixing low and high intensity moves for an interval-style, calorie burning dance fitness party. Ages 18+. Instructor: Lucy M. Croft, Licensed Zumba® Fitness Instructor

Miller Park Pavilion, Main level

Day..... DatesTime..... Fee
 Friday Sept. 29 - Dec. 15 (9 weeks)*8:30 AM - 9:30 AM..... \$81

*no class 10/13, 11/10 or 11/24 *makeup class will be 12/22 if needed

GYMNASTICS & TUMBLING



Two separate four-week sessions will be offered and led by the great instructors of Gymnastics Etc. Classes will be held on Friday late afternoon and evenings in the gym at Lincoln Leisure Center. See attached schedule.

Parent/Tot Gymnastics (Ages 18 - 35 months)

Join the fun, parents! Group learning, individual challenges, repetition and spending time together exploring new activities make for an exciting class. Develop balance and coordination while improving gross motor skills with rolls, jumps and obstacle courses. Together we stretch and play in a fun and structured environment.

Super Tot Gymnastics (Ages 3yr - 4yr)

Little people will have big fun improving large motor skills and self-confidence. Children will be taught the fundamentals of gymnastics while developing coordination, balance, and body awareness in a fun and energetic environment. Apparatus used includes basic tumbling, bars, and beam. Note: Children need to participate without parental assistance.

Gym Stars (Ages 5yr - 8yr)

Gym Stars is a great way to improve coordination, increase physical strength and endurance, and have fun all at the same time! This class teaches introductory gymnastics skills on all the gymnastics equipment: beam, bar and floor. No experience required.

Class	Age(s)	Day	Time	Session 1	Fee per session
Super Tot	3 - 4yr	Friday	4:30 PM - 5:00 PM	9/29 - 10/20	\$39
Parent/Tot	18m - 3yr	Friday	5:00 PM - 5:30 PM	9/29 - 10/20	\$39
Super Tot	3 - 4yr	Friday	5:30 PM - 6:00 PM	9/29 - 10/20	\$39
Gym Stars	5 - 8yr	Friday	6:00 PM - 7:00 PM	9/29 - 10/20	\$54

Class	Age(s)	Day	Time	Session 2	Fee per session
Super Tot	3 - 4yr	Friday	4:30 PM - 5:00 PM	10/27 - 11/17	\$39
Parent/Tot	18m - 3yr	Friday	5:00 PM - 5:30 PM	10/27 - 11/17	\$39
Super Tot	3 - 4yr	Friday	5:30 PM - 6:00 PM	10/27 - 11/17	\$39
Gym Stars	5 - 8yr	Friday	6:00 PM - 7:00 PM	10/27 - 11/17	\$54

FALL TENNIS LESSONS AT MCGRAW PARK

All ages and skill levels can expect a challenging but enjoyable tennis experience this fall! With group lessons ranging from introductory youth to experienced adult, this program will help you build new skills, enhance existing abilities, and hopefully develop a passion for the game that you can continue enjoying throughout life.

Under the direction of certified PTR Instructor Mary Z. Walker, all classes will meet at McGraw Park.

See below for age breakdown and class details, along with the attached schedule.

Tot Tennis (Age 5)

A FUN introduction to the game will be the priority! We'll use engaging activities, drills, and games to help teach and develop the basic of the basics.

Pee Wee (Ages 6-7)

Emphasis on hand-eye coordination, racquet skills, footwork, lines, and shots.

Youth (Ages 8-9)

Focus will be on the fundamentals of grip, strokes, serve, and volleys.

Junior (Ages 10-12)

Class includes skills, drills, games, strokes, serves, and challenging play progressing towards game-based play.

Teen (Ages 13-15)

Ability to serve and rally preferred. Class will focus on fine tuning shots and skills to help develop an all-around game. Participant should be able to participate in game-based play with their peers.

Adult (Ages 16+)

Prior tennis experience preferred, though not required. Players should expect consistency of ground strokes, serves, and volleys with more advanced techniques and strategies to incorporate into singles and doubles play.

USTA recommended racquet sizes based on age/skill level

Tots.....	Age 5yr.....	23"
Pee Wee.....	Ages 6/7.....	23-25"
Youth.....	Ages 8/9.....	25-26"
Youth.....	Ages 10/12.....	26-28"
Teen/Adult.....		28"

All City of Bloomington tennis courts are open for public play free-of-charge on a first-come, first-serve basis, outside of Bloomington Parks & Recreation or school lessons, events, or tournaments, which all have priority over open play. Courts are located at Bloomington High School (8 lighted), McGraw Park (4 lighted, 2 unlighted), Stevenson Park (3 lighted), and Rollingbrook Park (3 unlighted). We request no private lessons on public courts.



Class	Age(s).....	Day	Dates	Time	Fee
Pee Wee.....	Ages 6 - 7	Tu	Sept. 19 - Oct. 17 (10/24 makeup date).....	5:30 PM - 6:15 PM	\$40
Youth.....	Ages 8 - 9	Tu	Sept. 19 - Oct. 17 (10/24 makeup date).....	6:30 PM - 7:30 PM	\$45
Junior.....	Ages 10 - 12	Th	Sept. 21 - Oct. 19 (10/26 makeup date).....	5:30 PM - 6:30 PM	\$45
Adult	Ages 16+	Th	Sept. 21 - Oct. 19 (10/26 makeup date).....	6:45 PM - 8:00 PM	\$50
Tots.....	Age 5	Sat.....	Sept. 23 - Oct. 21 (10/28 makeup date).....	8:30 AM - 9:00 AM	\$40
Pee Wee.....	Ages 6 - 7	Sat.....	Sept. 23 - Oct. 21 (10/28 makeup date).....	9:15 AM - 10:00 AM	\$40
Youth.....	Ages 8 - 9	Sat.....	Sept. 23 - Oct. 21 (10/28 makeup date).....	10:15 AM - 11:15 AM	\$45
Junior.....	Ages 10 - 12	Sat.....	Sept. 23 - Oct. 21 (10/28 makeup date).....	11:30 AM - 12:30 PM.....	\$45
Teen.....	Ages 13 - 15	Sat.....	Sept. 23 - Oct. 21 (10/28 makeup date).....	11:30 AM - 12:30 PM.....	\$45



WINTER CO-ED VOLLEYBALL LEAGUE

Get your team together for a fun volleyball experience! Opportunities are available for teams to enter in a Recreation, Intermediate, and Competitive League. Each team is required to make their own calls.

Games can be scheduled from 6:00 PM -10:00 PM on Tuesday or Thursday evenings.

Team fee is due at registration and the signed team roster is due on site at the first match.

Teams must register online as at this time, in-person team registration at the office will not be an option.

Registration deadline is December 17.

Competitive League
Tuesday Nights
Starts January 9

Recreational League
Thursday Nights
Starts January 11

Intermediate League
Thursday Nights
Starts January 11

Season is tentatively scheduled to run January 9 - March 21. Team fee is \$150.

STILL NEED A TEAM THIS FALL?

Team registration for our Fall season closes soon. September 10th is the deadline to register a team for this Fall.

If you do not have a team but would like to play, you can email nmckenry@cityblm.org and be added to the league's Free Agent list for either season. More league specific information and rules can be found at BloomingtonParks.org.



ADULT VOLLEYBALL OPEN GYM

Drop in to enjoy some informal pick-up games of volleyball at Pepper Ridge Elementary School on Sunday evenings.

Take advantage of this great opportunity to play with friends while also meeting some new players or potential future teammates!

Cost is \$3 per visit. Payment (cash only) is made on site.

Sunday - Drop in at any time between 6:00 PM - 8:30 PM
on the following dates:

November 5, 12, 19 and December 3, 10, 17



Health & Fitness Center

Carle Health & Fitness Center is Bloomington-Normal's premier wellness destination. Their state-of-the-art facility offers a wide range of services and programs, including group fitness classes, personal training, health coaching, and more. Their team of experienced health professionals works closely with clients to help them achieve their goals, whether it's improving their overall fitness or managing a specific health condition. *All programs listed below will be led and instructed by Carle Health & Fitness Center professionals.



TAI CHI

Practicing self-care has never been easier. Tai Chi is a timeless ancient tradition of gentle physical exercise and stretching. This self-paced exercise routine involves a series of movements performed in a slow, focused manner accompanied by deep breathing. Each posture flows into the next without pause, ensuring that your body is in constant motion. Tai Chi helps to improve balance and lengthens and strengthens muscles. Learn the fundamentals of this ancient Chinese tradition with this weekly session.

Location: Carle Health & Fitness Center Mind/Body Studio (1111 Trinity Lane, Bloomington)

Day	Dates	Time	Fee
Tues (Session 1)	Oct. 3 - Oct. 24	4:30 - 5:30 PM	\$65
Tues (Session 2)	Nov. 7 - Nov. 28	4:30 - 5:30 PM	\$65
Tues (Session 3)	Dec. 5 - Dec. 26	4:30 - 5:30 PM	\$65



KICKSTART - YOUTH FITNESS

School's back in session! Let's make sure to exercise our bodies as well as our minds. Exercise-based games and activities geared towards 8 - 12 year-olds of all athletic abilities. Designed for kids to reach their recommended daily exercise minutes. Entry-level program focused on non-competitive gross motor play.

Mondays & Wednesdays - "Kids Move" Land Workouts
Thursdays - "Water Workouts" (in the warm water pool)

Location: Carle Health & Fitness Center (1111 Trinity Lane, Bloomington) *no class on 11/23 & 12/25

Day	Dates	Time	Fee
M/W/Th (Session 1)	Sept. 11 - Oct. 5	4:30 - 5:15 PM	\$59
M/W/Th (Session 2)	Oct. 9 - Nov. 2	4:30 - 5:15 PM	\$59
M/W/Th (Session 3)	Nov. 6 - Nov. 30*	4:30 - 5:15 PM	\$59
M/W/Th (Session 4)	Dec. 4 - Dec. 28*	4:30 - 5:15 PM	\$59

All equipment provided by Carle Health & Fitness Center. Children need to bring their own water bottle and wear appropriate clothing and closed-toed shoes. Registration closes 1 week prior to the start of each session.

Community Sports Organizations

The Bloomington Park & Recreation Department supports a number of community organizations dedicated to leisure time activities for local residents. To be part of this listing email Parks@CityBlm.org

BASEBALL/SOFTBALL

- B-N Baseball Assoc. - Youth Baseball for ages 7 - 19..... bnba.net
- B-N Girls Softball - Youth Softball for ages 7 - 19..... bnlsa.org
- McLean County PONY League - Youth Baseball for ages 5 - 18mcponybaseball.com
- Play9Sports - High School age..... Play9Sports.com

CRICKET

- Central Illinois Cricket Association - Youth & Adult..... cicainfo.com

DISC GOLF

- BN Disc Golf Club - All ages bndisc.com

FISHING

- McLean County Sportmens Association - All ages.....Find them on Facebook

YOUTH FOOTBALL (FLAG & TACKLE) AND CHEER

- Bloomington Cardinals..... bloomingtoncardinals.com
- Bloomington Knockers..... bloomingtonknockers.com
- B-N Fighting Irish..... bnfightingirish.com
- Bloomington Wolves.....Find them on Facebook
- Twin City Tigers..... twincitytigersfootball.com
- B-N Cougars..... bncougarsfootball.com

HOCKEY

- Bloomington Youth Hockey - Travel Youth Hockey bloomingtonyouthhockey.com
- Central Illinois Girls Hockey Association - Girls Youth Hockey..... cigirlshockey.com
- McLean County Sharks - High School Hockey..... mcyhasharks.com

LACROSSE

- B-N Warriors - Ages 9-14 bnwarriors.com

PICKLEBALL

- Bloomington-Normal Pickleball.....Find them on Facebook

RUGBY

- Bloomington Crash - Men's Rugby Club.....Find them on Facebook

RUNNING

- Lake Run Club - All ages..... lakerunclub.org

SOCCER

- FC Central Illinois Soccer - Youth Soccer fccentralillinois.com
- Inter South Soccer League - U5-U8..... chicagointersouth.com
- Prairie City Soccer League - Youth Soccer for ages 5-15..... pcslsoccer.org
- Midwest Sports Inc. - Adult Soccer..... midwestsports@hotmail.com

SWIMMING

- Central Illinois Masters Swim Team, Inc. - Ages 18+..... cimst.org

TENNIS

- B-N Tennis Association - Youth & Adult Tennis..... Matt Runyan at Evergreen Racquet Club
- Bloomington Tennis & Turf..... blonotennisturf.com
- Table Tennis - ISU Wellness Table Tennis Club - Open to ages 18+ in the community..... (309) 838-7657

SPECIAL INTEREST

Event



Tiny Melodies

Tiny Melodies: An Inclusive Early Childhood Music Experience offers children, ages birth to 4 and their caregivers an opportunity to explore and experience music in a fun and meaningful way. This curriculum is designed to focus on the developmental needs of children, while offering age appropriate musical experiences. Activities include singing, movement & structured instrument play, plus so much more. Our young participants will learn, grow, create, socialize and start building lasting relationships. Caregivers are encouraged to participate in the music making process. Instructor: Developing Melodies ** No un-registered siblings please
Ages 0 - 4
Tuesdays, Sept. 12 - Oct. 17
5:00 PM - 5:45 PM
Lincoln Leisure Center
Fee: \$75

DevelUP Brain Games - **NEW!** (Movement & Mindfulness)

DevelUP Brain Games focuses on improving your child(ren)'s emotional intelligence, working memory, attention/focus, and rule changes through activities developed specifically for brain development and academic performance. This program allows each participant to learn and progress in their own creative ways, while also building emotional-regulation skills and confidence. Each activity is centered around physical activity, creativity, mindfulness, and motivation through individual curiosities. Program highlights include; exploration, enjoyment, critical thinking, and social-emotional learning.
Instructor: Patrick Pommier
Wednesdays, Sept. 6 - 27
Ages 6 - 7 - 5:00 PM - 5:50 PM
Ages 8 - 9 - 6:00 PM - 6:50 PM
Lincoln Leisure Center
Fee: \$39



Falltime Stories, Crafts & Snack

Let's have some fun this fall. Each week will be a different story and craft that children can use to help retell the story at home. We will also make a fall snack!
Ages: 4 - 10
Thursday, Sept. 21 & 28
5:15 PM - 6:15 PM
Lincoln Leisure Center
Fee: \$29

SPECIAL INTEREST



Halloween Crafts

Let's make some spooky decorations to hang up at home!
Wear your costume to the last class if you would like!
Ages 5 - 10
Wednesdays, Oct. 11 - 25
5:45 PM - 6:45 PM
Lincoln Leisure Center
Fee: \$29

Munchie Monsters

Let your child tame the inner munchie monster by letting them help create their very own snacks. This class will introduce some basic kitchen skills and food preparation. Parents please be aware we will be using ingredients that may contain eggs, dairy, and may have been processed in plants that also process nuts.
Ages 4 - 6
Wednesdays, Oct. 11 - 25
4:30 PM - 5:30 PM
Lincoln Leisure Center
Fee: \$29

Turkey Time

Let's make a fun turkey to display for the big holiday! It will be the turkey's time to shine.
Ages 4 - 11
Monday, Nov. 13
5:15 PM - 6:15 PM
Lincoln Leisure Center
Fee: \$15



Cookie Cut Outs

We will cut ornaments with cookie cutter shapes from clay. The second week they will be decorated and ready to hang on the tree and we will decorate a cutout cookie with frosting.
Ages 5 - 11
Thursdays, Dec. 7 & 14
5:30 PM - 6:30 PM
Lincoln Leisure Center
Fee: \$29



Cultural Cooking

Learn a recipe from different cultures and a little about the origin. Korean, Chinese, Italian, Spanish, and Greek will be some of the cultures explored.
Ages 9 - 14
Monday/Wednesday, Dec. 11 - 20
5:15 PM - 6:30 PM
Lincoln Leisure Center
Fee: \$39

Wintertime Stories Crafts & Snack

Let's have some fun this winter. Each week will be a different story and craft that children can use to help retell the story at home. We will also fix a winter snack!
For Ages: 4 - 8
Thursdays, Jan. 11 & 18
5:00 PM - 6:00 PM
Lincoln Leisure Center
Fee: \$29

Microwave Mug Meals

We will turn simple ingredients into an easy meal that is cooked in the microwave in just a coffee mug. We will try cakes, mac & cheese and even pizza!
For ages 9 - 14
Thursdays, Jan. 11 & 18
6:15 PM - 7:30 PM
Lincoln Leisure Center
Fee: \$36

Camp

Winter Break Camp

Campers will participate in games, crafts, and activities. Each child needs to bring a sack lunch and drink daily. Dress appropriately for the weather. Gym shoes are required, No electronics are allowed.

Ages 5 - 11 (5 year olds must be in Kindergarten)
Wednesday, Jan. 3 - Fri. Jan. 5
8:00 AM - 5:00 PM
Lincoln Leisure Center
Fee: \$30/day

Teen/Adult Art & Special Interest



Drawing For the Fun of It

In three weeks learn simple ways to warm up your drawing abilities. In that time you will create three finished colored drawings of a creature you “adopt.”

Instructor: Marcia Greenwood, IOAA

Ages 8 - 15

Thursdays, Nov. 9 - 30 (no class on 11/23)

5:00 PM - 6:30 PM

Ages 16 and older: 7:00 PM - 8:30 PM

Lincoln Leisure Center

Fee: \$25

Texturing Your Drawing & Painting

In three weeks create finished mixed media artwork of either cats, dogs, or rabbits that are built up in layers. These original works will be ready to display.

Instructor: Marcia Greenwood, IOAA

Thursdays, Dec. 7 - 21

Ages 8 - 15: 5:00 PM - 6:30 PM

Ages 16+: 7:00 PM - 8:30 PM

Lincoln Leisure Center

Fee: \$25

Wire Sculpture For the Fun of It

In three weeks learn the basics of creating standing or sitting wire sculptures of a person and their animal companion.

Next, how to embellish simple sculptures, and finally how to create an environment for your sculptures. Instructor: Marcia Greenwood, IOAA

Saturdays, Nov. 4 - 18

Ages 8 - 15: 1:30 PM - 3:00 PM

Ages 16+: 3:30 PM - 5:00 PM

Lincoln Leisure Center

Fee: \$25



Learning to Throw

Ever wanted to give the potters wheel a try? This class will teach you how to turn bowls, vases or other decorative pieces. All works will be fired in our kiln and returned for painting or glazing. Instructor: Bonnie Bernardi

For ages 14 and up

Mondays, Oct. 16 - 30

6:00 PM - 7:30 PM

Lincoln Leisure Center

Fee: \$65



Safe Sitter Class

This class is a babysitting preparation program designed for boys and girls ages 11 - 14. Safe Sitter is a positive experience for each participant. Topics include babysitting as a business, success on the job, childcare essentials, safety for the sitter, injury management, preventing problem behavior and care of choking infant and child. Lunch will be provided. Class is taught by certified Safe Sitter Instructors.

Ages 11 - 14

Saturday, Oct. 14, Community Activity Center

110 Douglas - Normal

Saturday, Nov. 18, Lincoln Leisure Center

Saturday, Jan. 13, Community Activity Center

110 Douglas - Normal

9:30 AM - 4:00 PM

Fee: \$55

SPECIAL EVENTS



Family Pumpkin Fun

Learn some new carving techniques! Instructors will provide some step by step directions for adult and child to create their pumpkin masterpiece. All supplies provided. We will have a fire roaring and s'mores supplies available once the carving is complete. One adult per child please.

Ages: 5 - 14

Sunday, Oct. 22nd

2:00 PM - 3:30 PM

Hike Haven

Fee: \$30 for adult / child

Paint with Mary Jo - Dragon

Participants will create your very own canvas painting to take home with you. Follow along with step by step instructions. We will provide all the supplies and take care of clean-up. Children will participate independent of an adult.

Instructor: Mary Jo Johnson, IOAA

Ages: 8+

Sunday, Nov. 5

1:30 PM - 3:00 PM

Lincoln Leisure Center

Fee: \$25

Paint with Me - Fox

Together you will create your very own canvas painting to take home with you. Follow along with step by step instructions. We will provide all the supplies and take care of clean-up. Instructor: Mary Jo Johnson, IOAA

Ages: 4 - 12

Sunday, Dec. 17

1:30 PM - 3:30 PM

Miller Park Pavilion

Fee: \$35 for adult / child

Fee: \$20 for additional child



10th Annual Ugliest Sweater Run

Put on your best holiday cheer and come out to Miller Park for the 10th annual Ugliest Sweater Run with Bloomington Parks Recreation and Fleet Feet Bloomington. There will be a 3 Mile non-competitive run or walk, with prizes awarded for special sweater categories. Stop on the route at the selfie stations for pictures and add your best Ugly Sweater picture to the event page. <http://www.fleetfeetbloomington.com/races/ugliest-sweater-run>.

For all ages

Saturday, Dec. 9

1:00 PM

Miller Park



Candy Cane Drop

Santa will be taking a ride with our forestry crew in one of the boom lift trucks and dropping candy canes for the kids to pick up! Adults will need to remain with their children through the entire event. All participants will get a chance to visit Santa when he comes back down to the ground!

Check in at 10:00 AM we will do the drop promptly at 10:15 AM. Pre-registration is required. This is an ALL outdoor event.

Ages 3 - 12 with an adult

Saturday, December 9

10:15 AM

Fee: \$12

ART CLASSES



Clay Pottery for Youth

Come out and try something new to create bowls, vases or other decorative pieces of wheel thrown pottery. All works will be fired in our kiln and returned for painting or glazing.

Instructor: Bonnie Bernardi

Ages 7 - 12

Mondays, September 18 - Oct. 2

Mondays, Nov. 27 - Dec .11

6:00 PM - 7:15 PM

Lincoln Leisure Center

Fee: \$55



Picasso Style Face - Painting

Learn about Pablo Picasso. Create a 11x 14 Cubist painting. Painting instruction, equipment & supplies provided. Paint may stain, dress accordingly. Instructor: Peggy Dunlap, IOAA

Ages 8+

Saturday, Oct. 21

1:00 PM - 3:00 PM

Lincoln Leisure Center

Fee: \$29



Pen & Ink

Explore pen & ink techniques to create your own matted drawing. Drawing instruction, equipment & supplies provided.

Instructor: Peggy Dunlap, IOAA

Ages 10+

Tuesday, Sept. 26

6:00 PM - 8:00 PM,

Lincoln Leisure Center

Fee: \$29



Ceramic Basics

Explore clay as your form of expression. Participants will be able to squeeze, poke, cut, roll, and see how the clay will respond. Projects will be age appropriate and allow for artistic creativity. Instructor: Bonnie Bernardi

Mondays, Nov. 6 - 20

Ages: 5 - 10 from 5:15 PM - 6:15 PM

Ages: 11 - 15 from 6:30 PM - 7:30 PM

Lincoln Leisure Center

Fee: \$50

Lino Block Carving - Card Making

Design, carve and print your own greeting cards. Ink may stain, dress accordingly. Instructor: Peggy Dunlap, IOAA
Ages 10+
Saturday, Nov. 18
10:00 AM - 12:00 PM
Lincoln Leisure Center
Fee: \$35



Mud to Masterpiece

Parent and child will create bowls, animals and more in this hands-on class. We will use hand building clay which will be fired in the kiln, then returned for painting the second week. We will also try various forms of airdry clays the second week.
Ages 3 - 5 with a parent
Saturdays, Oct. 21 & 28
10:00 AM - 11:00 AM
Lincoln Leisure Center
Fee: \$29 for parent & child



Cartooning Workshop

Learn cartooning secrets to create action figures and characters! Students will be taught the basics to get them started in creative cartooning. Instructor: Bonnie Bernardi
Ages 7 - 12
Saturday, Nov. 4
Lincoln Leisure Center
10:00 AM - 11:15 AM
Fee: \$25

Family Craft Fun - Halloween

You will be introduced to some fun Halloween theme crafts. Adult and child will work together to complete projects with their own creativity!
Ages 4 - 12 with an Adult
Saturday, Oct. 14
1:30 PM - 3:00 PM
Lincoln Leisure Center
Fee: \$29



Family Craft Fun - Christmas

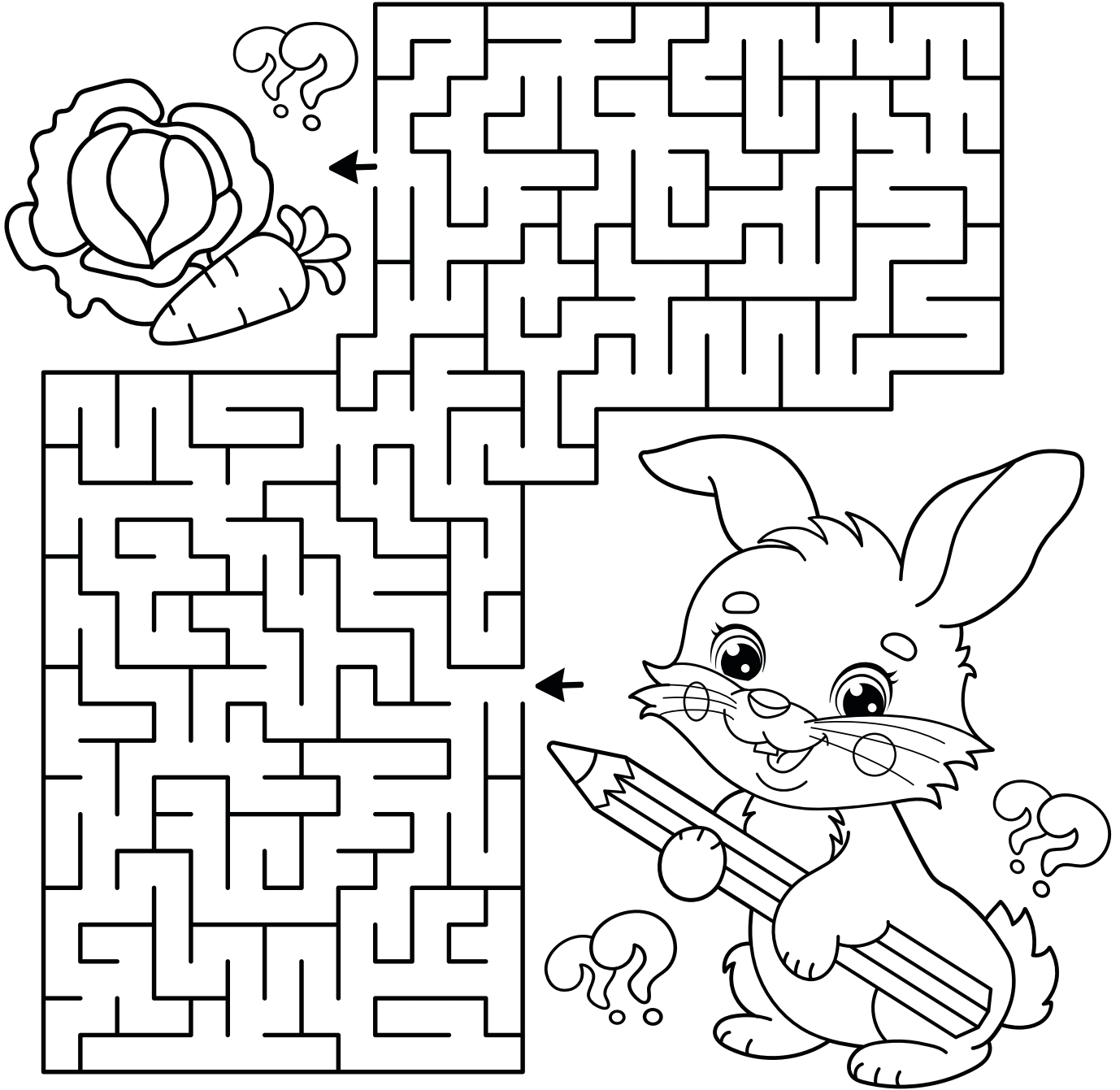
You will be introduced to some fun Christmas theme crafts. Adult and child will work together to complete projects with their own creativity!
Ages 4 - 12 with an Adult
Saturday, Dec. 2
9:30 AM - 11:00 AM
Lincoln Leisure Center
Fee: \$29



Monster Mugs

Learn to make a ceramic mug that looks like a monster!
All supplies provided.
Ages 7 - 12
Saturdays, Jan. 6 - 20
9:30 AM - 10:30 AM
Lincoln Leisure Center
Fee: \$29

Parks Puzzle Page





Miller Park Adult Center

A part of the City of Bloomington's Parks & Recreation Department.

The purpose of the Miller Park Adult Center is to serve the needs and interests of mature adults (55+) in McLean County. Located in Miller Park in the lower level of Miller Park Pavilion, the Center is an accessible facility featuring billiards, game tables, library, areas for socializing, T.V., computer area, and cards. Donuts (Wednesdays and Fridays) and hot coffee are also available.



Monday: Closed • Tuesday: 9:00 AM - 12:00 PM • Wednesday - Friday: 9:00 AM - 2:30 PM

BLOOMINGTONPARKS.ORG • (309) 434-2260

OLDER ADULTS (55+)



Miller Park Adult Center

We welcome and encourage all older adults to participate in the many programs and services mentioned online and in our brochure. Drop by the Center to meet with new and old friends and enjoy the pleasant surroundings! The Miller Park Adult Center offers a wide variety of activities and recreational opportunities. While everything at the Miller Park Adult Center is free there are some programming that will require preregistration and a fee. Be sure to stop in and check what is going on for the week. You can also view our monthly activity calendar online now.

The Miller Park Adult Center provides older adult services, information, and opportunities for older adults. For more information or to get involved, call the Center at (309) 434 - 2255 or call our main office Monday through Friday at (309) 434 - 2260.

Miller Park Adult Center - Hours of Operation

For Adults 55 & Over (must be able to function independently)
Miller Park Pavilion, Lower Level

Monday: Closed
Tuesday: 9:00 AM - 12:00 PM
Wednesday - Friday: 9:00 AM - 2:30 PM

Please note the Miller Park Adult Center will be closed on recognized City of Bloomington Holidays. The Center could also close due to weather, close early due to low attendance, or for unseen events.

Miller Park Adult Center will be closed on the following days:
Monday, September 4, Friday, November 10,
Thursday, November 23, Friday, November 24,
and Friday, December 22 through Tuesday, January 2, 2024

Happenings at the Miller Park Adult Center

Learn a new game or meet a new friendly face. Come spend some time working on puzzle(s), picking up a book, or joining a game in process. Learn something new or teach someone else how to play. Socialization and working minds are very important skills to constantly keep you going. Check out these things you can do while visiting the Miller Park Adult Center.

Tech HELP!

Staff at the Adult Center will be available daily during open hours to answer questions and assist with your cell phone, laptop, tablet, Kindle, or any other electronic device. Bring it along and, hook it up to our internet and ask anything you need answered. We will do our best to assist or advise you of some options.

Lending Library

Books are available for check out. Current and classics are available in our Lending Library which changes every other month and are provided by the Bloomington Public Library. Feel free to also browse our own book selection of donated books to check out.



Happenings at the Miller Park Adult Center

Blood Pressure & Blood Oxygen Screening

Stay in good health and get your blood pressure or blood oxygen checked for free. No appointment required. Just ask the Adult Center staff to assist you. A blood pressure cuff and oximeter are kept at the Adult Center.



Billiards

The pool tables have had a facelift! Bring your cue sticks and a friend to play a friendly game of pool.

Shuffleboard

Come out and enjoy the weather! Dust off the pucks and brush off the courts - you are ready to play! You don't have to know how to play - we will teach you. Bring a friend, get some coffee, and have some fun in the mornings.



Strong for Life Exercise

Start your day off on the right foot. Come out to the park and get your exercise in for the day. We will do some low impact stretches and gentle movements to keep your body moving. You will move at your own comfortable pace. This is to keep the body moving and limber.

Tuesdays & Fridays: 9:15 AM - 10:00 AM

Card Groups at the Center

Everyone is welcome! Weekly games give older adults an opportunity to meet new friends, socialize, and brush up on skills.

Five Crown - Every Friday

Dominoes - Every Tuesday

Phase 10 - Every Thursday

Hand & Foot - Every Wednesday and Friday

Bridge, Bunco, and Euchre welcome any day.

Bring a new game group to the Adult Center!

Coffee Chat

Come on out to the center to enjoy some hot coffee, socialization, and great friendships. Discuss the topics of the day or whatever is on your mind.

Thursdays: 9:00 AM

Grocery Day

Now introducing Grocery Day! We can all be under tough times, but we are here to support you. Come out to the Adult Center to pick up perishable items that you need that are provided by Midwest Food Bank. No registration needed. Occurs on either the 2nd or 3rd Thursday of Each Month.

Day..... Date..... Time

Th Sept. 14..... 9:15 AM

Th Oct. 12 9:15 AM

Th Nov. 9 9:15 AM

Th Dec. 14 9:15 AM

Grocery Bingo

Everyone loves to play grocery bingo. Play your cards to try and win fresh produce, canned goods, or other prizes. Have some fun, make some friends and everyone goes home a winner. Some Bingos are sponsored by Evergreen Senior Community. **Participants must register online to save their seat.**

Day..... Date..... Time Fee

Th Sept. 14..... 1:00 PM - 2:00 PM \$4

Th Oct. 12 1:00 PM - 2:00 PM \$4

Th Nov. 9 1:00 PM - 2:00 PM \$4

Th Dec. 14 1:00 PM - 2:00 PM \$4

Feeling Puzzled?

Come out and put together some puzzles or work on existing ones with Center Supervisor. Puzzles are relaxing to work on and good for maintaining cognitive sharpness to keep it working on various skills.

Thursdays: 12:30 PM

Movie Matinees

Come out the Pavilion and let's relax with an excellent movie selection. We will be watching movies that range from the classics to new releases. Enjoy some popcorn and beverages. You do not need to go to the theater alone or travel late at night. See the monthly calendar for titles of movies.

1st & 3rd Friday of Each Month: 11:45 AM

Happenings at the Miller Park Adult Center

Want to Start your own Group?

Come out any day and play any kind of cards or even start a new group! To become involved with any group or to start something new, speak with the Center Supervisor or contact the Adult Center at (309) 434 - 2255.



Appetizers & Bingo

Come out to the park for one last time. Enjoy some varieties of appetizers and snacks while playing everyone's favorite game.

Location: P.J. Irvin Park

Day.....	Date	Time	Fee
M	Oct. 2	11:30 PM - 1:30 PM	\$15

Outdoor Bingo - REGISTRATION OPEN NOW

There's nothing more perfect than being outdoors and playing Bingo. We will get outdoors this Fall to enjoy the weather while playing our favorite game. Snacks will be provided.

Location: Rollingbrook Park

Day.....	Date	Time	Fee
F	Sept. 1	10:00 AM - 12:00 PM.....	\$15

Birds & Bingo - REGISTRATION OPEN NOW

Come out early to try to find various birds in their habitat. Play a couple rounds of Bingo, enjoy some brunch and watch for birds.

Location: Ewing Park II

Day.....	Date	Time	Fee
F	Sept. 15	9:00 AM - 11:00 AM	\$15



Halloween Bingo

Let's get into the Halloween Spirit! Everyone will get to create and decorate their very own Halloween Bingo Board. We'll see who the lucky one is when we play rounds of Special Edition Halloween Bingo! Snacks will be provided.

Location: Miller Park Adult Center

Day.....	Date	Time	Fee
Tues.....	Oct. 31	1:00 PM - 3:00 PM.....	\$15



Fall Cookout

Let's celebrate the first day of Fall with a weenie roast. Spend the afternoon out in the park enjoying the cooler weather. There will be a campfire and cookout. Wear comfortable shoes and bring a jacket.

Location: Hike Haven, Forrest Park

Day.....	Date	Time	Fee
M.....	Sept. 25	12:00 PM - 2:00 PM	\$15

Game Day

Get out of the house and play games with good friends! We will play some Card Games, rounds of Bingo, throw in some Trivia, and even a board game. Come out to the center for a great afternoon.

Location: Miller Park Adult Center

Day.....	Date	Time	Fee
Tues.....	Nov. 7	12:00 PM - 2:00 PM	\$15

OLDER ADULTS (55+)

Happenings at the Miller Park Adult Center



Trivia Fun

It doesn't matter how good you are at history or remembering specific things. It is all about being able to laugh and have fun with friends! Snacks will be provided.

Location: White Oak Community Room

Day.....Date.....Time.....Fee
 Wed.....Nov. 29.....1:00 PM - 3:00 PM.....\$15



Cabin Fever

Don't let the cold keep you from coming out and playing with us. We will have some hot lunch along with rounds of Bingo. Join in the company of your friends and beat the wintery blues.

Location: Miller Park Adult Center

Day.....Date.....Time.....Fee
 Mon.....Jan. 22.....11:00 AM - 1:00 PM.....\$15



Christmas Exchange

Come out for an afternoon of holiday cheer! Get into the Christmas spirit by joining in Rudolph's games. Bring a "white elephant" gift (under \$5) to play in the exchange. Lunch will be provided.

Location: Miller Park Adult Center

Day.....Date.....Time.....Fee
 Mon.....Dec. 4.....12:00 PM - 2:00 PM.....\$8



Holiday Celebration

Just because it's the busy season, doesn't mean you can't come out and enjoy the day with others. Today is the day to relax, take a break, and enjoy the holiday season. Lunch will be provided.

Location: Miller Park Adult Center

Day.....Date.....Time.....Fee
 Fri.....Dec. 15.....12:30 PM - 2:30 PM.....\$15



Miller Park Zoo

Active Senior Tours

Take your morning stroll at the Zoo! We'll visit a different area of the Zoo each month & learn about the animals who live there. You'll be guided by a knowledgeable staff member who will give you amazing information...and maybe even a peek behind the scenes! No reservations are required. Your tour guide will meet you at the Zoo entrance. Tours will begin promptly at 8:30 AM.

Second Wednesday of the month at Miller Park Zoo from 8:30 AM - 9:30 AM. Fee: \$5 per person, Ages 60+

**JOIN OUR
TEAM**



Scan the code with your smartphone to learn more!



CITY OF
Bloomington
ILLINOIS

PARKS & RECREATION

IS HIRING, GO ONLINE TO BLOOMINGTONIL.GOV/JOBS FOR DETAILS.



Older Adult Trips Ages 55+

*For all trips, the bus will leave from Lincoln Leisure Center - 1206 S. Lee St. at the time listed. Trips will return to Lincoln Leisure Center at the time listed, though arrival time is approximate. We will do our best to return by the listed time.

*All attendees must be able to function independently.

*Refunds will not be given on cancellations made less than five days before the scheduled trip unless the spot can be filled.

*For trips which require advanced reservations for the purchase of tickets, refunds will not be given to cancellations made after the specific trip's registration deadline unless the spot can be filled.



Let's Hit the Road - Lunch Edition

Enjoy a social lunch one Wednesday a month with others at a restaurant out of town. Even though the destination (up to one hour away) is a surprise, there will be good company, delicious food, and fun! There is usually a little walking around and shopping or sightseeing involved along the way as well. Program fee does not include the meal or gratuity.

Maximum: 24

October 18..... 10:15 AM - 4:00 PM

November 15..... 10:15 AM - 4:00 PM

January 17 10:15 AM - 4:00 PM

Fee: \$15 per trip

Progressive Parks

Join us for the "Out of Town" edition of Progressive Parks. We are going to have a progressive lunch while visiting various parks outside (though not too far) the Bloomington-Normal area. Come along while Neal navigates us from park to park while Nicole serves up the delicious dishes. Dress according to the weather and wear comfortable shoes.

Date: Wednesday, September 27

Time: 10:00 AM - 4:00 PM

Fee: \$15



Let's Hit the Road - Breakfast Edition

Take a little road trip and enjoy a nice breakfast with the company of others out of town. Destination will be a surprise. Expect to have a good time as our trip may also include a stop or two along the way. Program fee does not include the meal or gratuity.

Maximum: 24

October 4..... 8:15 AM - 12:00 PM

November 8..... 8:15 AM - 12:00 PM

December 6 8:15 AM - 12:00 PM

January 10 8:15 AM - 12:00 PM

Fee: \$15 per trip



Fresh Air Friday

Get out of town and enjoy some quality fresh air and great scenery, all while experiencing the calmness and tranquility of our natural environment. Wear comfortable shoes and dress accordingly as we will be walking around outside.

For this trip we will be getting in the Fall spirit while traveling to The Great Pumpkin Patch in Arthur. We will then stop at Yoder's Kitchen for a lunch buffet followed by a visit to Beachy's Bulk Foods before heading for home. Cost ONLY includes transportation and admission into The Great Pumpkin Patch. Cost does not include lunch, gratuity, or any purchases made throughout the day.

Friday, October 13

Time: 8:30 AM - 3:30 PM

Fee: \$20

Maximum: 24

Tea Room Trip

Let's check out one of our area's newest restaurant destinations...Kickapoo Tearoom and Boutique in Downs. Registration fee will include a traditional tea room tiered lunch, drinks, and gratuity. After lunch, we'll do so more exploring and shopping around the area before heading for home.

Tuesday, October 24 - 10:45 AM - 3:00 PM

Fee: \$40

Maximum: 20

Older Adult Trips Ages 55+

*For all trips, the bus will leave from Lincoln Leisure Center - 1206 S. Lee St. at the time listed. Trips will return to Lincoln Leisure Center at the time listed, though arrival time is approximate. We will do our best to return by the listed time.

*All attendees must be able to function independently.

*Refunds will not be given on cancellations made less than five days before the scheduled trip unless the spot can be filled.

*For trips which require advanced reservations for the purchase of tickets, refunds will not be given to cancellations made after the specific trip's registration deadline unless the spot can be filled.



The Barn III Conklin Dinner Theater

We're heading to The Barn III in Goodfield for a Sunday lunch matinee. Join us on Sunday, October 29 as Miss Scarlett, Professor Plum, Mrs. White, Mr. Green, Mrs. Peacock, and Colonel Mustard treat us to the classic farce-meets murder mystery comedy whodunit, Clue. Fee includes transportation, full meal and drinks, and gratuity.

Sunday, October 29 - Time: 11:00 AM - 4:15 PM

Fee: \$74

Maximum: 24



Brunch and Holiday Shopping

We're heading out of town (East on I-74 to give you a clue) to get an early start on some holiday shopping. We'll start with a brunch/lunch and then head out to visit several places to shop throughout the day. We prefer you do not "shop 'til you drop", so please wear comfortable shoes and plan to enjoy a nice day of shopping. Program fee includes transportation only.

Thursday, November 30

Depart: 9:00 AM - Return: 4:00 PM

Fee: \$15



Beef House Dinner Theater - Christmas Show

A bountiful holiday buffet and iconic Christmas melodies await us for a matinee show at The Beef House. The 2023 rendition of the Beef House Christmas Show features live music and will pay tribute to those classic songs that take us down memory lane each holiday season.

Thursday, December 14

Depart: 10:00 AM - Return: 5:00 PM (approximately)

Location: Beef House Restaurant & Dinner Theater -
Covington, IN

Fee: \$79 (includes buffet dinner, show, salad, rolls, beverage, dessert, and tax.)

Maximum: 24



Festival of Lights

Enjoy a trip to see one of Central Illinois' preeminent Christmas Lighting displays. The Festival of Lights in East Peoria. This Winter Wonderland will be a great experience with Christmas right around the corner. We will depart in the early evening, drive through the display, and stop at Busy Corner for pie on the way home. *Note, we will not be stopping for an actual meal.

Wednesday, December 20

Depart: 4:30 PM - Return: 7:00 PM

Fee: \$15

OLDER ADULTS (55+)



• ANNIVERSARY •

CELEBRATION!

SUN., SEPT. 17 • 1:00 PM – 4:00 PM

LOCATION:

TIPTON PARK NORTH SHELTER & THE WEST BALLFIELD

THIS OPEN HOUSE FAMILY EVENT WILL HAVE MUSIC, YARD GAMES, POPCORN & FUN!

NO REGISTRATION REQUIRED.





Providing recreation opportunities to people with disabilities since 1973

FALL
2023

Serving ages 4 through the lifespan

Special Olympics Sports • Crafts
Fitness Classes
Zoo Education • Special Events
Cooking Programs
Fine Art • Teen Programs & More!



REGISTRATION BEGINS THURSDAY, AUGUST 10

WWW.BLOOMINGTONPARKS.ORG/SOAR • (309)434-2260

FOLLOW US ON FACEBOOK [.com/cityblmSOAR](https://www.facebook.com/cityblmSOAR)

GOLF COURSES

PRAIRIE VISTA GOLF COURSE

502 W. Hamilton Rd.
Bloomington, IL 61701
(309) 434 - 2217

bloomingtongolf.org
**4 Star Rating by Golf Digest in its
2023 "Great Places to Play!"**

Mission Impossible

September 30th at 9:00 AM
The Den at Fox Creek

\$65 per person (includes golf, cart, lunch & prizes)

Play The Den as hard as it can play. Back tees, the hardest pin placements and ultra fast greens. This is a team event and the format is a four person scramble. Get your best team together and come play the course in a way that Arnold Palmer never dreamed it would.

Prairie Vista Golf Course, is a Packard-designed course and one of the most challenging and unique in the Midwest. Two-level greens and fairways, lakes and rolling hills, offer golfers the opportunity to play an ambitious game on a great course. PVG has a full-service pro-shop open year round. For reservations or information, call (309) 434 - 2217.



Kids Play Free Program

Every day of the week after 2:00 PM at all three courses, kids (ages 17 & under) play free with a paying adult. Take advantage of this great opportunity to spend quality time together while introducing your child to the game at no cost to the child. No family relationship necessary. One child per adult. Cart fees additional. Does not apply to passholders.



the *Den* 
at FOX CREEK

3002 Fox Creek Rd
Bloomington, IL 61705
(309) 434 - 2300

bloomingtongolf.org
4 1/2 Star Rating by Golf Digest in its
2023 “Great Places to Play!”

Home of IHSA Large School Finals



One of only three Arnold Palmer-Signature courses in the state, this is a must on your list of courses to play! The Den at Fox Creek is an 18-hole, 7,035 yard, par 72 championship course with bent grass tees, greens, and fairways. The design is similar to a links-style course with extensive earth mounding, undulating fairways, and wide, generous landing areas from all tees. The fairways are guarded with 131 traps and numerous pot bunkers. Water comes into play on seven holes. The course sports several dog-legs and double dog-leg holes with many risk/reward opportunities for the avid golfer. The practice area consists of 1.5 acres of bent grass tees, chipping green, sand trap chipping area, and a practice fairway sand bunker.


HIGHLAND PARK
GOLF COURSE

Highland Park, located on South Main Street, has numerous challenges on its 5,800 yard-long course including creek crossings, three lakes, well-placed sand traps, and tree-lined fairways. The Pro Shop has a full line of golf accessories. For reservations or information, call (309) 434 - 2200.

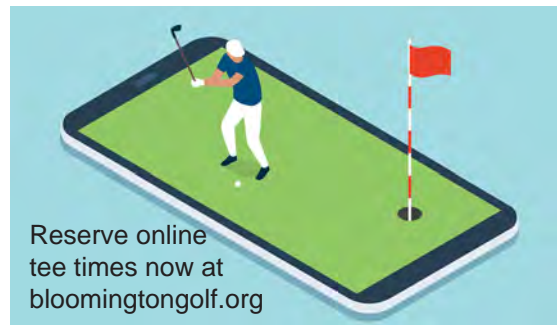
1613 S. Main St. Bloomington, IL 61701
(309) 434 - 2200

bloomingtongolf.org
3 Star Rating by Golf Digest in its
2023 “Great Places to Play!”



Launch Monitor Fittings

Take advantage of the latest in clubfitting technology and schedule a time to be fitted on our Foresight GC 2 Launch Monitor. Golf Digest calls getting fit with launch monitor “the quickest way to pick up 15 yards on your drives”. To schedule a time to be fitted, call (309) 434 - 2217.



Reserve online
tee times now at
bloomingtongolf.org

MILLER PARK ZOO



MILLER PARK ZOO

EST. 1891

1020 S. Morris Avenue, Bloomington - (309) 434 - 2250
millerparkzoo.org

Admission Rates

Youth (ages 3 - 12) - \$4.95
Adult (ages 13 - 59) - \$6.95
Senior Citizen (ages 60 & up) - \$5.95
Military - \$5.95
Children (2 & under) - FREE
Costs/Fees are subject to change.

Group Rates

Advanced registration required,
restrictions apply, call (309) 434 - 2250.

Hours

9:30 AM - 4:30 PM
Open everyday except
Thanksgiving and Christmas

Daily Activities

Free with Zoo admission!

River Otter Presentation

daily at 11:00 AM and 2:30 PM
Zookeepers will chat with guests, answer
questions, and feed the river otters.

Snow Leopards Scheduled Feedings

daily at 4:00 PM
Guests can watch the Zookeepers
feed these animals.

Contact the Zoo to learn about Tortoise feeding rates.

Feedings are at 11:30 AM & 3:00 PM
and make for a great gift experience!



Check our website for daily activities throughout the year,
including scheduled animal feedings, up close animal encounters and more!
millerparkzoo.org

ZOO SPECIAL EVENTS



Spooktacular

Oct. 21st, 5:00 PM - 8:00 PM

It's Halloween time! What better way to get into the fun spirit of Halloween than Miller Park Zoo's annual Halloween party! This evening event will be a little bit scary but still a lot of fun for all ages. There will be local vendors, crafts, games, glitter tattoos! There will also be an opportunity to purchase Hayride tickets at the admissions window for \$3.00 each (weather permitting). Pricing is \$3 for members and \$8 for non-members.



Spooktacular

Oct. 22nd, 12:00 PM - 3:00 PM

It's Halloween time! What better way to get into the fun spirit of Halloween than Miller Park Zoo's traditional non-scary Halloween party! There will be vendors, crafts, games, and glitter tattoos! There will also be an opportunity to purchase Hayride tickets at the admissions window for \$3 each (weather permitting). All other activities are included free with the cost of regular admission prices. Zoo members welcomed at no extra cost.



WildLights

Two weekends!

December 1st & 2nd

5:00 PM - 8:00 PM

December 8th & 9th

5:00 PM - 8:00 PM



Need help getting into the Holiday Season? Join us for an evening walk through the Zoo all decked out with lights and decorations for the Holidays. There will be fun activities for the kids (kids at heart too!) and a craft. Enjoy some hot chocolate and an opportunity to purchase a \$3 kit to make your own s'more! For more information, please email Silvia Schuh at sschuh@cityblm.org or call (309) 434 - 2826

ZOO SPECIAL EVENTS



Breakfast with Santa

December 9th

8:30 AM & 10:00 AM

Ticket purchases are required to reserve your spot. Enjoy a continental style breakfast at the Zoo! There will be a chance to meet with Santa himself and take pictures with him and Mrs. Claus. Enjoy a ride on the carousel and an animal encounter! Spots for this event fill up fast so don't delay!

Become a Zoo Member

Unlimited FREE admission
to Miller Park Zoo

Discounts on:

Education Programs,
Concessions, Zootique, and
Visits to AZA Zoos Nationwide

Join or renew today at
mpzs.org



MILLER PARK
ZOOLOGICAL
SOCIETY



ZOO EDUCATION PROGRAMS



ANIMAL CRACKERS

Ages 3-5 year-olds & an adult

Animal Crackers is a Miller Park Zoo classic! Join us once each month for a story, animal encounter, craft, & snack. Our topic is always a surprise and we have a great time guessing which animal will visit! One adult accompanies each child to class but does not pay an additional registration fee. The registration fee includes admission to the Zoo for the participating child & one adult on the day of class.

*Children must be three years old to participate.

*Unregistered siblings of any age may not attend.

Classes are identical in each session, so register for only one class each month.

Friday, September 299:00 AM - 10:00 AM
 Friday, September 291:00 PM - 2:00 PM
 Friday, September 295:00 PM - 6:00 PM
 Saturday, September 309:00 AM - 10:00 AM
 Saturday, September 3010:30 AM - 11:30 AM
 Saturday, September 301:00 PM - 2:00 PM

Friday, October 279:00 AM - 10:00 AM
 Friday, October 271:00 PM - 2:00 PM
 Friday, October 275:00 PM - 6:00 PM
 Saturday, October 28.....9:00 AM - 10:00 AM
 Saturday, October 28.....10:30 AM - 11:30 AM
 Saturday, October 28.....1:00 PM - 2:00 PM

Fee: Family Zoo Society members:
 \$8 per child; non-members: \$13 per child
 Max #: 12



ZOO EXPLORERS

Ages 6 - 11

Zoo Explorers is a terrific 2-hour adventure that includes animal encounters, classroom learning, and hands-on experiences out in the Zoo.

Please sign up for only one class each day; curriculum will be the same both morning & afternoon.

Animal Observations

Monday, October 9
 9:00 AM - 11:00 AM / 1:00 PM - 3:00 PM

Animal Senses

Monday, January 15
 9:00 AM - 11:00 AM / 1:00 PM - 3:00 PM

Fee: Family Zoo Society members: \$10 per child;
 non-members: \$14 per child
 Max #: 15

ZOO EDUCATION PROGRAMS



WINTER SAFARI CAMP Ages 6 - 11

Winter Wonders

It's beginning to look a lot like winter and Miller Park Zoo is the place to go! Come spend a day learning how animals prepare for seasonal changes and bear the cold weather. Meeting some Zoo animals & making a craft will be part of the fun. A snack will be provided. Bring a sack lunch & wear play clothes.

Curriculum is identical for each day; please register for only one session.

Wednesday, December 27 9:00 AM - 3:00 PM
Thursday, December 28 9:00 AM - 3:00 PM
Friday, December 29 9:00 AM - 3:00 PM

Fee: Family Zoo Society members:
\$29 per child; non-members: \$39 per child.
Max #: 15





ACTIVE SENIOR TOURS

For those 60 years & over

2nd Wednesday of the month

8:30 AM - 9:30 AM

Fee: \$5 per person

Take your morning stroll at the Zoo!

We'll visit a different area or topic of the Zoo each month & learn about the animals who live there.

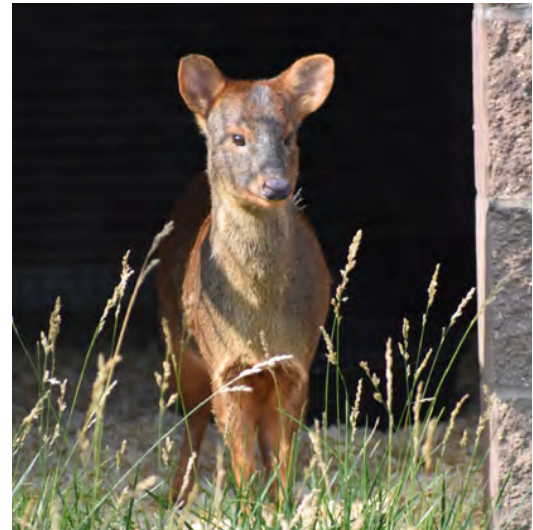
You're sure to learn something new from our guides... and maybe even get a peek behind the scenes!

No reservations are required.

Free admission for Zoo members.

Your tour guide will meet you at the Zoo entrance.

Tours will begin promptly at 8:30 AM



BLOOMINGTON ICE CENTER



201 S. Roosevelt Ave. • (309) 434 - 2875 • (309) 434 - 2880 Fax

Open Skate Schedule

September 5th - December 17th, 2023

Special Themed Skates:

Freaky Friday - Fri. Oct 27th 6:30 PM - 8:00pm,
Skate with Santa - Sat. December 2nd 1:00 PM - 3:00 PM

Weekday Open Skate

Mondays - Fridays 11:30 AM - 1:30 PM

Friday Night Open Skate

Fridays - 6:30 PM - 8:00 PM
Saturdays - 1:00 PM - 3:00 PM • Sundays - 2:30 PM - 4:00 PM

Open Skate Fees

Admission - \$6.00
Skate Rental - \$2.00 - Skate Aids - \$5.00

Group Rates:

(not available during special
promotions or with discounted coupons)
Must pay all at once with one form of payment;
does not include skate rental

10 - 24 people \$4.00 admission per person
25+ people \$3.00 admission per person

See our website for additional information on all of our open
skates at: BloomingtonIceCenter.com





Private Ice Rentals

(Skating, Broomball or Hockey)

Field Trips, Youth Groups, Day Cares, Church Groups, Corporate Team Building, etc. Looking for a different activity for your group? Why not try something on the ice! Come have a private skating party where only your group is skating on the ice. Can't skate-no worries. We also offer broomball private rentals! We supply the equipment and ice. You supply the private group for fun!

Please call (309) 434 - 2875 for more information, including pricing and scheduling. You can also check out our website at bloomingtonicecenter.com

The Coolest and the Most Educational Field Trips!

How does the ice stay frozen? What does the Zamboni do? The Bloomington Ice Center is the perfect place for "Edutainment"! Tour the Zamboni room where you can learn the history of the Zamboni and the science and physics of making ice. Then go out and skate, play broomball or curl.

For more information or to reserve your field trip call (309) 434 - 2875. We can accommodate a classroom or a whole school. Call for group rates. We serve food for groups!

The Coolest Group Outings!

Whether you bring your friends, family, organization or club, the Bloomington Ice Center is perfect. Call us at (309) 434 - 2875 for additional information.

Special Themed Open Skates

Freaky Friday Fright Night

Fri., Oct. 27 - 6:30 PM - 8:00 PM

Receive a free "glow" necklace with each paid admission so you can "glow" while skating in the dark. Don't forget to wear your Halloween costume! Door prizes, candy, music and lots of fun! A freaky, spooky, but cool place to be!



Skate with Santa

Sat., Dec. 2 - 1:00 PM - 3:00 PM

Skate with Santa at the Bloomington Ice Center this Christmas. Free cookie and 8oz hot chocolate with paid admission. Santa will be available for pictures. Have fun with all your family and friends skating to Christmas classics.



The Coolest Birthday Parties in Town!

All the fun and none of the work! Choose from our Bronze and Gold Level Packages. All of the Bloomington Ice Center Birthday Party Packages include Open Skate and Skate Rental, 90 minute party room rental, your choice of three separate beverage options. A personalized interactive white board greeting from the Bloomington Ice Center Party Pro's in which all of the guests can add their birthday wishes, the guest of honor receives a FREE skating pass for future use. Add broomball, a private ice rental or a skating instructor for an even cooler experience. Call (309) 434 - 2875 today for more information regarding open dates and details about our birthday packages.

Birthday Party Package:

\$15/person

- Includes: Paper plates, napkins, cups & utensils
- One beverage for each skater
- (Choose up to 2 from Sprite, Capri Sun, or Water)
- Ice cream dessert cup for each skater
- A personalized white board birthday greeting from the BIC Staff
- A return skating pass for the guest of honor (\$8 value)!

Important Party Information:

- An 8-person minimum is required for each party.
- We book parties during open skate times ONLY.
- A \$75 non-refundable deposit is required to book the party.
- We are not able to book a party if it is less than two weeks away.

Please call (309) 434 - 2875 for more information or to book a party!

Room Rental: You MAY book just the party room for \$120. This DOES NOT include any of the above, only the room, table, and chairs. Admission and skate rental is a separate expense.

Want even more fun??

- Add broomball to your event for only \$4.00 more per person.
- Add a skating class taught by a professional skating instructor for your entire party for only \$25 per 30-minute lesson.

Learn to Play Hockey Youth & Adult

All classes are co-ed - Required equipment listed in "Helpful Learn to Play Information."

Tots 1 - Ages 3 - 5

No experience is necessary. Beginner skating skills will be taught through fun games.

Hockey Tots - Learn to Play - Ages 3 - 5

Pre-requisite: Tots 1. Players will be taught basic skating and hockey skills, including forward skating, passing, shooting, and SCORING!

Blades 1 - Ages 6 -14

No experience necessary. Students will learn basic balance moves, forward skating, and stopping.

Hockey - Learn to Play - Ages 6 - 14

Pre-requisite: Tots 1 or Blades 1. Players will be taught basic hockey skills, including forward and backward skating, stopping, passing, shooting, and SCORING!

Teen/Adult - Hockey Learn to Play - Ages 15 +

This class is ran as a practice using multiple coaches. Classes will focus on the skills needed to play hockey including skating, stick handling, passing, shooting, scoring, proper positional play, and rules of the game. Full ice hockey equipment required.



Helpful Learn to Play Information

The Hockey Staff recommends that gear be rented or purchased prior to first class.

Players should practice getting dressed before the first day of class.

Full equipment is highly recommended for all classes. The minimum gear recommended for the Youth Learn to Play Hockey Classes is listed below. Skate rental is included in the cost of the program.

Rental hockey equipment is available for \$25 plus deposit per session.

The rental equipment fits 3 - 8 year olds. Please contact Brian Ludy at (309) 434 - 2878 or bludy@cityblm.org for rental equipment arrangements.



Tots 1 and Blades 1

No equipment required; bicycle or hockey helmet, pair of winter or hockey gloves, loose fitting sweat or snow pants, and loose fitting sweatshirt are heavily recommended.

Hockey Tots and Hockey - Learn to Play

Helmet with face mask, hockey gloves, hockey stick, shin pads, and elbow pads are required.

Teen/Adult - Hockey Learn to Play, and Adult Leagues:

Helmet (facemask is recommended but optional for 18 years and over), elbow pads, shin guards, gloves, stick, skates (rentals are ok), and hockey pants.

Open Hockey - Stick & Puck, Pick Up

We will offer two categories of Open Hockey

Stick & Puck is designed for skaters of all ages to practice individual skills, such as skating, shooting, and passing.

Scrimmages are not allowed during this event. Private hockey lessons are available during Stick & Puck sessions.

For more information regarding private lessons contact Brian Ludy at (309) 434 - 2878 or bludy@cityblm.org.

Pick-Up Hockey (aka rat hockey or pond hockey or shinny) is your designated scrimmage.

Players can sign up in person or online. Preregistration is online only. Players sign up and split into teams on their own.

There is no checking allowed. Players officiate themselves. Visit or call Guest Services at (309) 434-2737, or check the website: BloomingtonIceCenter.com for prices, monthly schedule, and times.

Learn to Play Hockey Fall Session Schedule

Class	Day	Fall 1	Time	Fee
Hockey Tots 3 - 5y.o.	Wed	9/6 - 10/11	5:00 PM - 5:40 PM	\$78
Hockey Tots 3 - 5y.o.	Sat	9/9 - 10/14	10:50 AM - 11:30 AM	\$78
Hockey Learn to Play 6 - 14y.o.	Wed	9/6 - 10/11	5:00 PM - 5:40 PM	\$78
Hockey Learn to Play 6 - 14y.o.	Sat	9/9 - 10/14	10:50 AM - 11:30 AM	\$78
Teen/Adult -Hockey Learn to Play ...	Wed	9/6 - 10/18 (no class on 10/11)	9:30 PM - 9:30 PM	\$89

Class	Day	Fall 2	Time	Fee
Hockey Tots 3 - 5y.o.	Wed	10/18 - 11/15	5:00 PM - 5:40 PM	\$65
Hockey Tots 3 - 5y.o.	Thurs	10/19 - 11/16	10:40 AM - 11:20 AM	\$65
Hockey Tots 3 - 5y.o.	Sat	10/21 - 11/18	10:50 AM - 11:30 AM	\$65
Hockey Learn to Play 6-14y.o.	Wed	10/18 - 11/15	5:00 PM - 5:40 PM	\$65
Hockey Learn to Play 6-14y.o.	Sat	10/21 - 11/18	10:50 AM - 11:30 AM	\$65
Teen/Adult -Hockey Learn to Play ...	Wed	10/25 - 12/6 (no class on 11/23)	9:30 PM - 10:30 PM	\$89

Class	Day	Winter Mini	Time	Fee
Hockey Tots 3 - 5y.o.	Wed+Sat	11/29 - 12/13	5:00 PM - 5:40 PM	
Meets both Wed and Sat	(5 Sessions)		10:50 AM - 11:30 AM	\$65
Hockey Learn to Play 6 - 14y.o.	Wed+Sat	11/29 - 12/13	5:00 PM - 5:40 PM	
Meets both Wed and Sat	(5 Sessions)		10:50 AM - 11:30 AM	\$65

Try Hockey for Free Day

Saturday Nov 4, 2023 • 4:20 PM - 5:00 PM • 4 - 12 year olds • FREE • (Max. 60)

Bloomington Ice Center proudly presents National Try Hockey for Free Day in partnership with USA Hockey on Saturday, November 4th. This event is designed to provide kids, between the ages of 4 to 12, a completely free experience to try youth hockey. Equipment is available to borrow.

Our top coaches will be on the ice to assist your child in learning the basics.

Your son or daughter does not need any previous skating or hockey experience. Pre-registration is required. To register, please visit www.tryhockeyforfree.com and search the ice rink zip code 61701.

Saturday Nov 4, 2023 • 4:20 PM - 5:00 PM • 4 - 12 year olds • FREE • (Max. 60)

Little Icebirds

Through a partnership between the ISU Hockey Coaching Staff, the Bloomington Ice Center is offering a 6 week introduction to Hockey for beginner players at a minimal cost. Boys and girls ages four to ten who can skate will be sized with equipment to use for the duration of the class.

Players will receive 6 Learn to Play practices ran by our college and youth hockey coaches.

Each participant will be able to borrow gloves, helmet, shin pads, elbow pads, pants, shoulder pads, hockey socks, stick, and bag. Jerseys will be given to the players to keep.

Class	Day	Time	Sessions	Fee
Ages 4-10	Saturdays	9/9 - 10/14	3:10 PM - 4:00 PM	(6 Sessions) \$115

Pre-Season and Holiday Clinics

3 on 3 Cross Ice Games for ages 8 and under

Min. 8/Max. 36 - each session

This program is in cross ice format with 40 minute games. Teams will be formed randomly each week. The program is designed so that the players touch the puck more often.

Through this skill development for all players will be maximized. Games will be played at the 8U level. Learn to Play and Hockey Tots as well as 6U and 8U players are encouraged to register. No experience is required to participate. Full ice hockey equipment is required. Goalies - please contact bludy@cityblm.org for reduced pricing.

Ages 3 - 8 - Saturdays 9/9 - 9/30 - 9:10 AM - 9:50 AM
(4 Sessions) - Fee \$40

Skills, Skating, and Scrimmage Clinic

Want to get ready for the season but still have the fun of games. This once a week clinic will be work on skills and skating for the first half of the ice time. The second half will split into teams to play scrimmage hockey, full ice or cross ice based on players ages and skills. Goalies - email Brian Ludy at bludy@cityblm.org for reduced fees.

Ages 6 - 12 - Mondays 9/11 - 9/25 - 6:10 PM - 7:00 PM
(3 sessions) - Fee \$45



Pre-Season Conditioning Camp

If you want to get a head start on the house league season, this camp will give you a chance to get the rust off your skates and get your legs back in hockey shape. This weekly practice for all ages will focus on conditioning and all your hockey skills. To get you ready for the season, skating, stickhandling, passing, and shooting will be covered.

Ages 8 - 14 - Thursdays 9/7 - 9/28 - 6:10 PM - 7:00 PM
(4 Sessions) - Fee \$60

Winter Mini 1000 Shots Clinic

Coaches will work on multiple shots throughout the winter school break. Players will get a chance to shoot wrist shot, backhand, snap shots, and slapshot for age-appropriate players.

Ages 7 - 15 - 12/26, 12/27, 1/2, 1/3
9:10 AM - 10:00 AM - Fee \$80

Hockey Leagues for adults

All players must be 2023 - 24 members of the USA Hockey in order to participate in the Adult Leagues. To register as a USA Hockey player, go to: usahockey.com.

For registration, please register on-line at
bloomingtonicecenter.com

Adult League Fall

Players (ages 18+) will register as an individual and the Bloomington Ice Center and Adult League Captains will form two or three divisions (low skill and high skill and possibly intermediate) and teams as evenly as possible. The first week will be evaluations, with teams formed after that. Most games will be on Sundays. There may be a once a month game on a Thursday, Friday or Saturday night as necessary. Teams will be a max of 15 players and minimum of 10 players. Players will play 12 total games. Fees include one jersey per year, officials, score keepers, and ice time.

Ages: 18+ - Sundays, Sept. 17 - Dec. 10
3:10 PM - 11:40 PM (games between these times)

Must register by Sept. 9, 2023.

Adult League Fall

Registration Dates: Residents: & Non Residents - 8/1 - 9/9
Players \$199 - Goaltenders \$100

Thursday Night College Scrimmage

Each Thursday Night where ice is available the Bloomington Ice Center will host a scrimmage for players 18+ who are college age. This will be first come first serve to a max of 24 players and 4 goalies. Players can sign up in person or online. Preregistration is online only. There is no checking allowed. Players will split into teams and officiate themselves. Please bring both a light and dark jersey to these scrimmages. Registration and fees online.



2023 – 24 HOCKEY LEAGUES FOR YOUTH

All participants must be registered as 2023 - 2024 ice players in USA Hockey in order to participate in the Youth Hockey League. To register for USA Hockey, go to: usahockey.com. *Players will need their current USA Hockey number when enrolling for league online or at the Bloomington Ice Center.

Registration for Youth Hockey Leagues will be online. Registration will be open from 8/1/23 - 9/24/23. To register you must have completed your registration with USA Hockey. You may select online registration for full payments or payment plans. Payment Plans will charge the credit card on file on the date of 10/1, 11/1, 12/1. If there is room still available, anyone registering after 9/24 may be charged a \$10.00 late registration fee.

Bloomington Youth House/Recreational Leagues
Bloomington Recreational Hockey will run a youth house/

recreational league that will skate for 18 weeks; Oct. 2, 2023 - Feb. 25, 2024. The weekend of Thanksgiving and two weeks during the Christmas/New Year holidays will be scheduled weeks off. No experience is required to participate. Each age group will skate once during the week (Monday through Wednesday) and once on the weekend (Saturday or Sunday). It is unknown at this time what night any age group will skate. Until we have the final registration numbers, a schedule cannot be finalized. The weekend time slots will be rotated as evenly as possible.



6U - Mini-Mites (players born 2017 or later)

Season Fees- full payment at registration, \$179 or \$60 at registration and 3 payments of \$40.

The players will skate twice a week, one weeknight and on Saturday. The focus will be on skill development through station work, small area games, and cross ice games.

8U - Mites (players born in 2015 & 2016)

Season Fees- full payment at registration, \$279 or \$99 at registration and 3 payments of \$60.

The players will skate twice a week: They will practice once a week and play cross ice games on the weekends.

Additional 8U - Mite opportunities below

10U - Squirts (players born in 2013 & 2014)

Season Fees- full payment at registration, \$379 or \$99 at registration and 3 payments of \$95. Teams will be formed, practice on a weeknight, and play a game on a weekend day. Games will alternate between cross ice games and full ice.

12U - Peewees (players born in 2011 & 2012) and

14U - Bantams (players born in 2010 & 2009)

Season Fees- full payment at registration, \$449 or \$110 at registration and 3 payments of \$115.

Teams will practice once a week and play one full ice game once a week (Saturday or Sunday).

House League Evaluations - To better balance the competitiveness of each team, players in the 10U, 12U, and 14U age levels will be required to attend evaluation skates between the days of 9/16/23 - 9/23/23. Players should attend both sessions. It is required that they at least attend one. The evaluation schedule is online.

ADM Advanced Practices for all Players

Additional Fees - \$199 or \$100 at registration and 2 payments of \$50 due by 10/15 and 11/15.

This program, which is available to all House League players, will have an additional 18 American Development Model (ADM) practices on a set weeknight (Thursday) that would not conflict with the regular house league practice nights. Players must be enrolled in one of the above Rec Leagues.

8U - Mite Additional Opportunities

8U - Mite Advanced Jamboree Team(s)

Additional Fees - \$150

Mite age players from the ADM Advanced Practice program would represent Bloomington Hockey in Central Illinois cross ice jamborees. The fees would include hosting a cross ice jamboree and participating in 4 away jamborees and unique jerseys will be provided for the players to wear at the jamborees. Additional Jamborees may be available for an additional fee.

8U - Mite House Full Ice Team

Additional Fees - \$299 or \$100 at registration and 2 monthly payments of \$100.

This Select team would play up to 12 full ice games using their Mite Advanced Jamboree team jerseys. Half the games would be played in Bloomington while the other half would be played against other Central Illinois programs at their rinks. The select team would possibly attend one away full ice, weekend tournament. The House Select team registration would be on a first come, first serve basis.

Learn to Skate Ages 2+

The Bloomington Ice Center presents a Learn to Skate hybrid program creating a fun environment for skaters to learn new and challenging skills! Our program is designed to develop skaters of all ages as they progress through each level to reach their goals!

Pre-School Ice Explorers Ages 2-5

Join us for a fun introduction to the ice with helpful direction from our instructors. Skaters will participate in coloring activities, fieldtrips around rink and on-ice obstacle courses.

Tots 1 - 3 Ages 3 to 5

The tot program is designed to introduce basic skating skills to young beginner skaters through a safe and controlled atmosphere using on-ice games and activities. Skaters will learn 2-foot glides, dips, 2-foot hops and introduced to backwards skating! *Skaters who have passed Tot 1 may move to the Learn to Play program!

Blades 1 - 6 Ages 6 to 12

The Blades program is designed for skaters to learn the essential skills for ice skating. The six-level curriculum introduces the fundamental moves: forward skating, backward skating, stops, edges, crossovers, turns and jumps. Upon completion of the Blades program, skaters will have knowledge of the sport, enabling them to advance to more specialized areas of skating. *Skaters who have passed Blades 1 may move to the Learn to Play program!

Jump & Spin: Level 1-3

Pre-requisite: Blades 6 (Participants must wear freestyle skates) Ages 6 + Skaters will learn basic freestyle elements, jumps, spins and spirals in a group lesson.

Teen /Adults

Ages 13 + Designed for the beginner teen/adult skater to promote physical fitness, balance, and coordination. The class is divided into four levels, adult skaters will progress at an individual rate while being challenged and motivated.

Create a Routine

Pre-requisite: Blades 2/Tots 3
For skaters wishing to take the skills they have learned in group class and develop them into solo programs! This program is geared towards skaters who do not have a private coach but are looking for the opportunity to learn routines and perform! Skaters must be enrolled in group LTS classes to take advantage of discount class fee.



Learn to Skate Ages 2+

LEARN TO SKATE FALL SESSION SCHEDULE

ClassDay.....Fall 1..... Time Fee
 Ice ExplorersThurs 9/7 - 10/1210:00 AM - 10:30 AM..... \$70

Tots 1-3Tues..... 9/5 - 10/105:30 PM - 6:00 PM \$70
 Tots 1-3Wed 9/6 - 10/11.....5:00 PM - 5:40 PM \$78
 Tots 1-3Fri..... 9/8 - 10/135:00 PM - 5:40 PM \$78
 Tots 1-3Sat 9/9 - 10/1410:50 AM - 11:30 AM..... \$78

Blades 1-6Tues..... 9/5 - 10/106:00 PM - 6:30 PM \$70
 Blades 1.....Wed 9/6 - 10/11.....5:00 PM - 5:40 PM \$78
 Blades 1-6Fri..... 9/8 - 10/135:40 PM - 6:20 PM \$78
 Blades 1-6Sat 9/9 - 10/1411:40 AM - 12:20 PM \$78

Teen/Adult - High Level ..Tues..... 9/5 - 10/105:00 PM - 5:45 PM \$84
 Teen/Adult.....Tues..... 9/5 - 10/105:45 PM - 6:30 PM \$84

Jump & SpinTues..... 9/5 - 10/105:30 PM - 6:00 PM \$70
 Jump & SpinSat 9/9 - 10/1411:40 AM - 12:20 PM \$78

Specialty Classes

Aspire to Figure SkateFri..... 9/8 - 11/3.....5:00 PM - 5:40 PM \$112
 Intro to Private Lessons ...Sat 9/23 - 10/712:20 PM - 12:50 PM \$40
 Create a Routine.....Sat 9/9 - 12/212:20 PM - 12:50 PM \$120

ClassDay.....Fall 2..... Time Fee
 Ice ExplorersThurs 10/19 - 11/30 (No class on 11/23)10:00 AM - 10:30 AM..... \$70

Tots 1-3Tues..... 10/17 - 11/28 (No class on 10/31, 11/21) ..5:30 PM - 6:00 PM \$60
 Tots 1-3Wed 10/18 - 11/29 (No class on 11/22)5:00 PM - 5:40 PM \$78
 Tots 1-3Sat 10/21 - 12/2 (No class on 11/25)10:50 AM - 11:30 AM..... \$78

Blades 1-6Tues..... 10/17 - 11/28 (No class on 10/31, 11/21) ..6:00 PM - 6:30 PM \$60
 Blades 1.....Wed 10/18 - 11/29 (No class on 11/22)5:00 PM - 5:40 PM \$78
 Blades 1-6Fri..... 10/20 - 12/1 (No class on 11/24)5:40 PM - 6:20 PM \$78
 Blades 1-6Sat 10/21 - 12/2 (No class on 11/25)11:40 AM -12:20 PM \$78

Teen/Adult - High Level ..Tues..... 10/17 - 11/28 (No class on 11/21)5:00 PM - 5:45 PM \$65
 Teen/AdultTues..... 10/17 - 11/28 (No class on 11/21)5:45 PM - 6:30 PM \$65

Jump & SpinTues..... 10/17 - 11/28 (No class on 11/21)5:30 PM - 6:00 PM \$60
 Jump & SpinSat 10/21 - 12/2 (No class on 11/25)11:40 AM - 12:20 PM \$78

Specialty Classes

Intro to Private Lessons ...Sat 11/4 - 11/18.....12:20 PM - 12:50 PM \$40

December Skating Clinic

Tots 1-3Tues &Wed. 12/5 - 12/13.....5:00 PM - 5:40 PM \$52
 Blades 1.....Tues & Wed..... 12/5 - 12/13.....5:00 PM - 5:40 PM \$52
 Blades 2-6Tues & Fri 12/5 - 12/15.....5:40 PM - 6:20 PM \$52
 Teen/Adult.....Tues 12/5 - 12/12.....5:40 PM - 6:20 PM \$26

Speciality Classes

Aspire to Figure Skate:

Pre-requisite: Blades ¾ and up

This is special program combines all the elements of developing a figure skater! Skaters will partake in on-ice edge class, program artistry, technique development and parent education! All skaters enrolled will receive a Aspire shirt!

Intro to Private Lessons:

Pre-requisite: Must be enrolled in LTS group classes

One-on-one lessons providing individualized instruction for LTS students wishing to:

accelerate progress, participate in future skating competitions, or simply want individual attention! Skater must be enrolled in group classes to take advantage of intro private lessons.

Once skaters have completed a session of private lessons then they are free to select a permanent coach for private lessons.

*Meet once a week for 3 weeks

Ice Show LTS Group Routines

This event only comes around once a year, do not miss out on this special opportunity for your LTS skaters to perform in the arena under the spotlight! All learn to skate participants who are enrolled in Fall LTS are eligible to enroll. Show performance will be held in the Grossinger Motors Arena on Sunday, 12/10! Registration fee to participate covers rehearsal ice time and costume accessories. *Additional fees for spectator tickets to show and optional items to purchase, pictures, video, ice show T-shirt and flowers.

Skaters will be grouped by level and perform a 2-minute routine (shadowed by a LTS instructor) These LTS routines will be sprinkled throughout the show with other solo, and trios performed by Central IL Figure Skating Club!

Show Day: 12/10/23

Rehearsals: Fridays 11/10-12/8 (not 11/24)

Time: 5:00-5:40pm

Fee: \$ 65.00



Theatre on Ice: Bloomington Pops:

Pre-requisite: Blades 3/Tots 3

Skaters will be exposed to diverse styles of choreography through musical programs. All participants must be a member of USFS basic skills, \$21.00 yearly fee to participate in performances. Skaters will learn and refine routines that will be performed at a figure skating exhibition. Additional fees will apply for costumes.

Tuesdays: 9/6 – 12/5 (No class on 10/31, 11/21)

12-week session Min/Max: 8/24

Time: 5:00 PM - 5:30 PM

Fee: \$120.00 (Payment Plans available online)

Please contact Lindsay Danner, Skating Director, at (309) 434-2877 or ldanner@cityblm.org if you have any questions.

Helpful Learn-to-Skate Information

Arrive at the rink 15 - 20 minutes early to collect your rental skates and prepare for your lesson. Bloomington Ice Center skate rental employees will assist you with proper sizing.

Please make sure young children use the restroom before class starts.

Wear long pants (no shorts), jacket or sweater, socks, and gloves or mittens. Dress in layers of clothing. Clothes should not restrict movement.

Helmets (bike, hockey, etc.) are strongly recommended for children under six, and should have a snug fit.

Classes will only be made up if the rink cancels a class. Bloomington Ice Center Learn-to-Skate staff reserves the right to cancel any class, combine classes, change instructors on any class and move students to a different class level based upon instructor evaluation.

Private Lessons

The Bloomington Ice Center is excited to offer one-on-one private lessons to your skaters! Skaters of all ages and levels in both hockey and figure skating can benefit from private lessons. The personalized attention you get from a coach helps you to learn and progress at an accelerated rate.

Plus, each session is tailored to you or your skater's goals and ability level.

If you're stuck on a particular skill, working with a coach one-on-one might be the time you need to make progress.

At the same time, if you're looking for new challenges, your coach can also introduce you to skills that you haven't tried before!

Interested in getting started with private lessons for you or your child? Please contact Lindsay Danner to get started!

PARK SERVICES & FACILITIES

Tree Services

Tree Trimming

Trees are trimmed for pedestrian and traffic clearance as well as selective thinning of branches, removal of dead wood, or storm damage repair. Trees are not topped, unless deemed necessary by the City Forester or a member of the staff.

At the Parks and Recreation Department, we have established a goal to increase the quality of trees within our City parkways and parks. The Department is governed by guidelines set within our Forestry Ordinance, Chapter 19, Number 1984. This ordinance permits the Parks and Recreation Department to plant, trim, spray, preserve, and remove any tree on City property to insure public safety or to maintain the health of the tree.

The ordinance also requires that anyone wishing to plant or have work done to a tree on City property, by someone other than our Forestry staff, secure a permit from the Parks and Recreation Department first. Any questions please call (309) 434 - 2280.

Tree City USA

The City of Bloomington is a designated Tree City USA - a program sponsored by the National Arbor Day Foundation in cooperation with the USDA Forest Service and the National Association of State Foresters. To become a Tree City USA, a community must meet four standards: a tree board or department, a city tree ordinance, a comprehensive community forestry program, and an Arbor Day observance. Bloomington's staff of certified arborists and trained professionals enhance the Tree City USA designation.





Constitution Trail

Constitution Trail is a joint venture between the City of Bloomington and The Town of Normal. Much of the trail follows the old Illinois Central Gulf Railroad right of way through the community. The trail was dedicated and named as such in celebration of the 200th birthday of the United States Constitution in 1987 and the grand opening of Constitution Trail was May 6th, 1989. The City of Bloomington, Town of Normal, and McLean County have plans for future trail expansion.

Approximately 45 miles of trail exist within both communities. In 2000 the Constitution Trail was designated a Millennium Trail by The White House Millennium Council. Many groups sponsor the trail including mcleancountywheelers.com, gototrails.com and Friends of the Constitution Trail. To become a Friend of the Trail and learn more check out constitutiontrail.org.



When using the trail please:

- Be Courteous
- Keep Right
- Do not Block the Trail
- Use Signals
- Yield
- Clean Up Litter
- Leash all Pets
- Enjoy!



Scan the QR code to view a map of the trail and to learn more!



Friends of the Constitution Trail

If you are interested in getting involved in the advocacy and awareness of the Trail, contact Friends of the Constitution Trail, P.O. Box 525, Bloomington, IL. 61702-0525, and online at ConstitutionTrail.org Friends is a citizens group interested in promoting trail use and development.

Trail maps are available now at The Hub at 115 E. Washington St., Suite 103, Bloomington, IL.
Normal Parks & Recreation, 100 E Phoenix Ave. in Normal.



Park Regulations

- Parks open at 6:00 AM and close at 10:00 PM. (Except Friendship Park closes at 9:00 PM.)
- Alcoholic beverages are prohibited.
- Motor vehicles restricted to roadways and parking areas.
- 20-mile-per-hour speed limit in all city parks.
- Pets are allowed in the parks on a leash. (Please clean up after your pet).

Park Shelters

Open-air shelters are located in:

Airport, Alton Depot, Atwood Wayside, Bittner, Brookridge, Clearwater, Eagle Crest, Eagle View, Ewing I, Ewing II, Fell, Forrest, Friendship, Gaelic, Holiday, Northpoint, O'Neil, Pepper Ridge, P.J. Irvin, Marie Litta, McGraw, Miller, Rollingbrook, Stevenson, Suburban East, Sunnyside, White Oak & Woodbury Park.

Parks are available free-of-charge on a first-come, first-served basis.



Park Services & Facilities

* Restroom or Porta Potty Available
 ** Porta Potty available June & July
 + Inclusive Harmony Playground

Basketball Court
 Fishing Lake
 Football Field
 18-Hole Golf Course
 Meeting Room
 Multi-purpose Area
 Nature Area
 Picnic Shelter
 Playground Equip
 Sand Volleyball Ct
 Soccer Field
 Softball Diamond
 Swimming Pool
 Tennis Court(s)
 Water Sprayground

L = Lighted

Park #	Park Name	Address	Basketball Court	Fishing Lake	Football Field	18-Hole Golf Course	Meeting Room	Multi-purpose Area	Nature Area	Picnic Shelter	Playground Equip	Sand Volleyball Ct	Soccer Field	Softball Diamond	Swimming Pool	Tennis Court(s)	Water Sprayground	Other
1.	Airport Park	3010 Winchester Dr	•				•	•	•		•	•						
2.	Alton Depot Park	101 S Western Ave						•	•									
3.	Angler's Lake Nature Preserve Park	1017 S Mercer St		•				•										
4.	Atwood Wayside*	303 N Robinson St							•									Trail Head
5.	BHS Tennis Courts	606 Towanda Ave													8L			
6.	Bittner Park*	3807 Rave Rd	•					•	•			•						
7.	Brookridge Park	2904 Ireland Grove Rd	•				•	•	•		•							
8.	Buck-Mann Park	116 Weldon St	•						•									
9.	Clearwater Park*	2716 Clearwater Ave	•					•	•	2	•							
10.	Constitution Park																	24-Mile Linear Park
11.	Eagle Crest Park	2506 Chesapeake Ln	•					•	•									
12.	Eagle View	4001 Baywood	•					•	•	•	•	•						
13.	Emerson Park	717 Bell St							•									
14.	Empire Junction	713 1/2 Empire St					•	•										Multi Use Trail
15.	Evergreen Park	1205 Forrest St							•									
16.	Ewing I*	1420 Towanda Ave						•	•	•								Hedge Apple Woods
17.	Ewing II*	1001 Ethell Pkwy						•	•			2						
18.	Ewing III	901 Jersey Ave		•								•						
19.	Fell Avenue Park	1301 Fell Ave	•					•	•									
20.	Forrest Park*	1813 Springfield Rd						4	•									4 Fire Rings
21.	Franklin Park**	302 E Chestnut St							•									National Historic Site
22.	Friendship Park	719 W Jefferson St						•	•									
23.	Gaelic Park	3102 Cave Creek Rd	•	•	•			•	•	•	•	•						
24.	Hike Haven	1310 Hike Haven Court																
25.	Holiday Park	800 S McGregor St		•					2	•				•				
26.	Marie Litta Park	317 S Gridley St							•	•								
27.	McGraw Park*	3202 Cornelius Dr							•	•	•	•			6L	•		Lighted Baseball Field
28.	Miller Park*	1122 S Morris Ave		•					•	•			•				•	
29.	Miller Park Zoo	1020 S Morris Ave																
30.	Northpoint School/Park**	2602 College Ave	•	•				2	•		•	•						Butterfly Garden
31.	Oakland School/Park	1605 E Oakland Ave	•						•			2						
32.	O'Neil Park*	1515 W Chestnut St					•		•	•		2	•					Baseball field
33.	P.J. Irvin Park*	1601 McKay Dr						•	•	•								
34.	Pepper Ridge Park*	2502 Fox Creek Rd	•						•	•	•	2L						
35.	Rollingbrook Park*+	1002 S Hershey Rd	•				•		•	•	•	•			3			9 Pickleball Courts
36.	Stevenson School Park*	2106 Arrowhead Dr	•					•	•	•		•			3L			
37.	Suburban East Park**	3011 Lisa Ave	•						•	•	•	•						
38.	Sunnyside Park	407 E Erickson Ave	•						•			•						
39.	Tipton Park North*	2201 Stone Mountain Blvd	•					•	•	•	•	2				•		Born Learning Trail
40.	Tipton Park South*	2410 G.E. Rd		•				•	•	•								Life Trail System
41.	White Oak Park*	1514 Cottage Ave		•	•	•	•	•	•	•	•	•						1-Mile Walking Trail
42.	White Oak Comm. Room	1514 Cottage Ave				•												
43.	Westwood Park	2301 Ridge Creek Rd																
44.	Withers Park	204 E Washington St																Picnicking
45.	Wittenburg Park	509 Lutz Rd																Walking Path
46.	Woodbury Park	1214 Woodbury Place						•	•									

PARK SERVICES

Registration Policies

Corporate City of Bloomington residents have the opportunity to register one week prior to non-residents.

RESIDENT REGISTRATION begins at 5:00 AM on August 23, 2023
NON-RESIDENT REGISTRATION begins at 5:00 AM on August 30, 2023.

Online registration will be available at 5:00 AM on the first day of registration; mailed, faxed and drop-off registration will be processed beginning at 8:00 AM on the first day of registration. All registrations received prior to the first day will be processed at random. All registrations received thereafter will be processed randomly on a daily basis.

Payment of Fees: Fees may be paid by cash, check, VISA, Discover, MasterCard or American Express at the time of registration. All monies are immediately deposited. Checks payable to: City of Bloomington.

Returned Checks: A \$25 service charge is assessed on all checks returned due to insufficient funds. The original amount of the check plus the service fee must be paid by money order or cash.

Program Enrollment Policy: All programs have a minimum and maximum enrollment, and are filled on a first-come, first-served basis. Bloomington Parks & Recreation reserves the right to cancel, postpone, or combine classes if the minimum enrollment has not been reached. The Parks & Recreation Department reserves the right to request proof of age of persons enrolling in classes.

Program Cancellation: If a program is cancelled due to insufficient registration, a full refund will be given. Please allow three to four weeks for the processing of refunds when program payment was made by cash or check. Credit refunds will be returned to your card.

Refund/Credit Policy: To be eligible for a requested refund or credit to account, the request must be received no less than five (5) full business days prior to the start of the program.

In the case of illness, a credit to account may be issued if program is not yet 50% completed. Prorating of a program in the event of an injury would start from the date of notification of the injury. Written documentation from a physician must be provided. A \$5.00 service charge will be assessed per participant, per activity on any refund. No refunds for program costing \$5.00 or less.

Refunds or credit on account will not be given for contractual programs or trips for which the Department has incurred costs, except in the event of cancellation by the Department.

Confirmation Email: An email will be sent upon registration for a class or program, or if placed on a waitlist. This will serve as a receipt. If you do not have an email on file we will mail the confirmation receipt. With our new system we strongly encourage all participants to have an email on file.

Insurance: Bloomington Parks & Recreation does not carry medical insurance and assumes no liability for personal injuries or loss of personal property while attending Department activities. A participant's own policy must cover any medical costs incurred.

Fee Assistance: Bloomington Parks & Recreation provides a fee assistance policy to reduce certain fees and charges for those who are unable to pay. Application forms are available at the main office and at the Lincoln Leisure Center.

Applications taken at least two weeks prior to the start of a program will be given priority processing; however, fee assistance fund availability and program registration cannot be guaranteed. Proof of residency and income are required at time of application, and a 50% deposit. All requests will remain confidential.

All requests will be reviewed and applicants will be notified at least one week prior to program start dates. The decision of the Recreation Department will be final.

Helpful Hints: Friends in same the class? If two or more persons from different families wish to be enrolled in the same class, registration forms and checks must be fastened together with a note indicating same. *(If only one space is available, no one will be enrolled.)*



Today's Date: _____

Fall 2023 Registration Form
Please print clearly. Missing information
will delay your registration.

Save Time - Register online at BloomingtonParks.org!

Adult Account Contact

FIRST & LAST NAME	GENDER	BIRTHDATE
ALLERGIES/MEDICATIONS:		

Additional Family Members

FIRST & LAST NAME	GENDER	BIRTHDATE
ALLERGIES/MEDICATIONS:		
FIRST & LAST NAME	GENDER	BIRTHDATE
ALLERGIES/MEDICATIONS:		
FIRST & LAST NAME	GENDER	BIRTHDATE
ALLERGIES/MEDICATIONS:		
FIRST & LAST NAME	GENDER	BIRTHDATE
ALLERGIES/MEDICATIONS:		
FIRST & LAST NAME	GENDER	BIRTHDATE
ALLERGIES/MEDICATIONS:		
FIRST & LAST NAME	GENDER	BIRTHDATE
ALLERGIES/MEDICATIONS:		

Household Information

Check here if you have registered in the last year and all information is correct. Otherwise please fill in information below.

Address, City, State, Zip _____

(Please list Apt. #)

Phone _____ E-Mail Address _____

Emergency contact _____

(Please list someone other than family members above.)

Flip over to continue registration.

Making the *national local* and the *local national*.

What you hear
changes everything.





109 E. Olive • PO Box 3157
Bloomington, IL 61702-3157

PRSRT STD
U.S. Postage
PAID
Bloomington, IL
PERMIT NO. 116

DATED MATERIAL
DELIVER BEFORE
AUGUST 22

HOW TO REGISTER

FOUR SIMPLE WAYS TO REGISTER...

- **ONLINE:** Log onto BloomingtonParks.org and follow the steps to set up your new household account.
- **FAX IN:** (309) 434-2483 Complete the registration form including your credit card number and expiration date.
- **MAIL IN:** Bloomington Parks & Recreation, PO Box 3157, Bloomington, IL. 61702-3157
- **DROP OFF:** The Hub - 115 E. Washington Street, Suite 103 open Monday - Friday 8:00 AM - 4:30 PM

Please register early. Class status is determined one week prior to starting date. Registration is not accepted by instructors.

**BLOOMINGTON RESIDENT
REGISTRATION BEGINS AT 5:00 AM**

WED., AUG. 23

**NON - RESIDENT
REGISTRATION BEGINS AT 5:00 AM**

WED., AUG. 30

For details on even more events and programs call the main office at (309) 434-2260 or visit us online at

BLOOMINGTONPARKS.ORG