



SYSTEMWIDE POTABLE WATER DISTRIBUTION IMPROVEMENTS

KEVIN KOTHE, P.E., DIRECTOR OF PUBLIC WORKS
CITY COUNCIL MEETING APRIL 25, 2022



PROJECT TIMELINE

Division and Enterprise
Pump Station Planning
Study approved by Council

JAN 2020

JULY 2020

Water Infrastructure
Master Plan approved by
Council

Division and Enterprise
Pump Station Planning
Study First Amendment to
study location alternatives
approved by Council

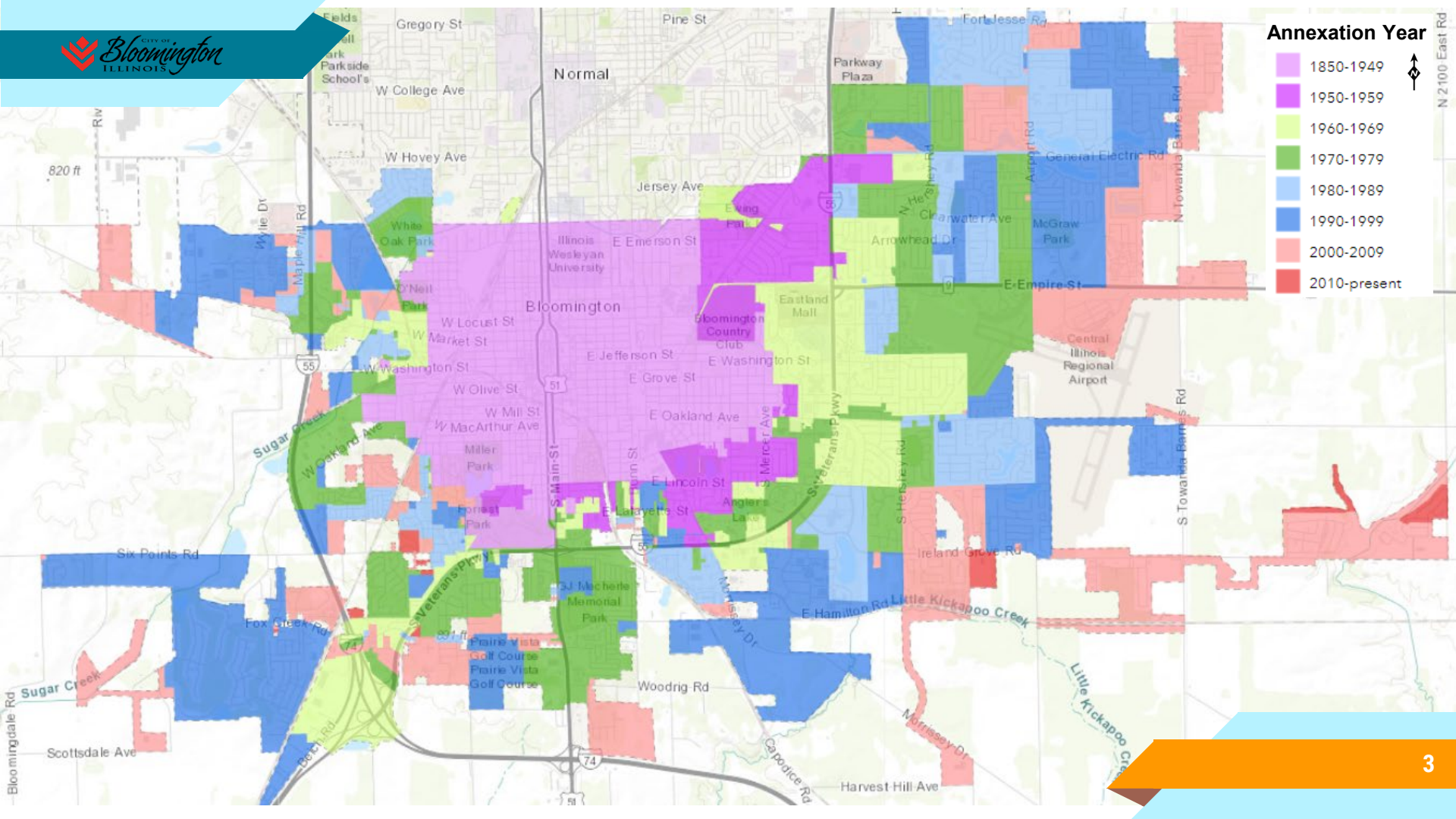
JAN 2021

JULY 2021

Division and Enterprise
Pump Station Planning
Study completed with a
base alternative to build
Hamilton Zone Pump
Station project

**Systemwide Potable
Water Distribution
Improvements Preliminary
Design contract submitted
for Council approval**

APRIL 2022

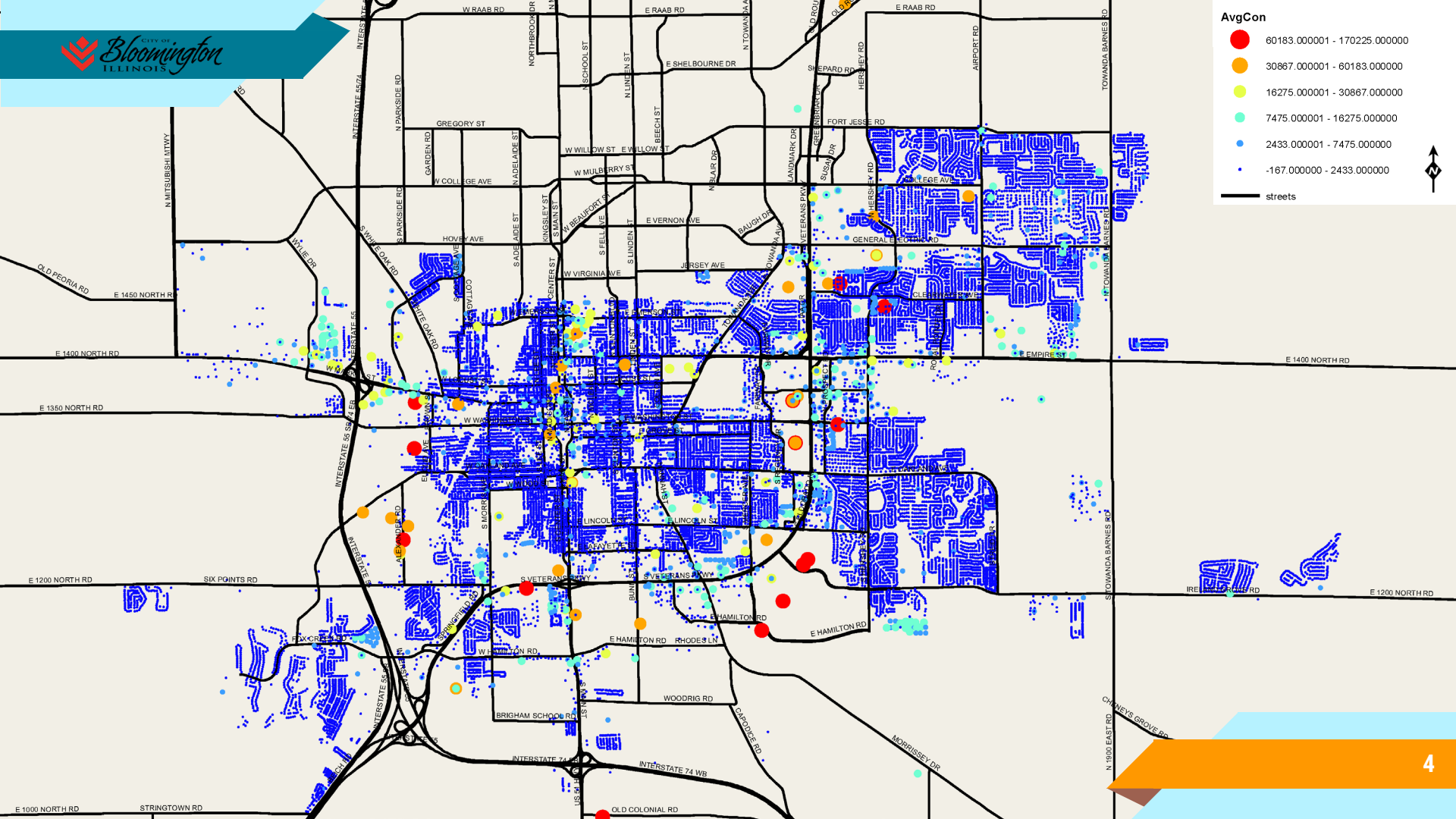


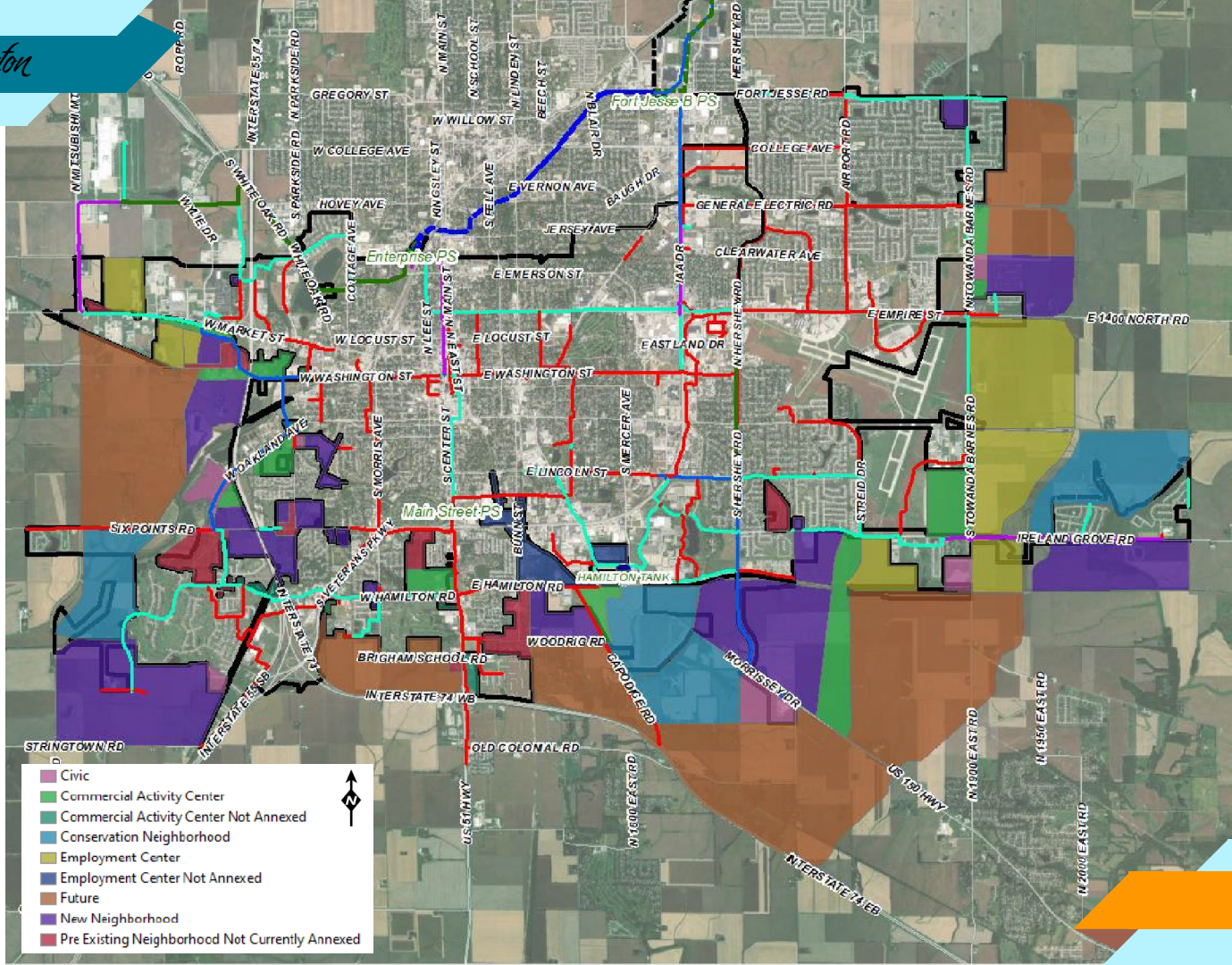
Annexation Year

- 1850-1949
- 1950-1959
- 1960-1969
- 1970-1979
- 1980-1989
- 1990-1999
- 2000-2009
- 2010-present

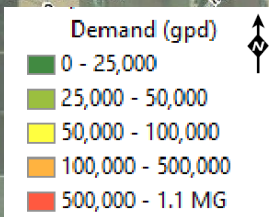
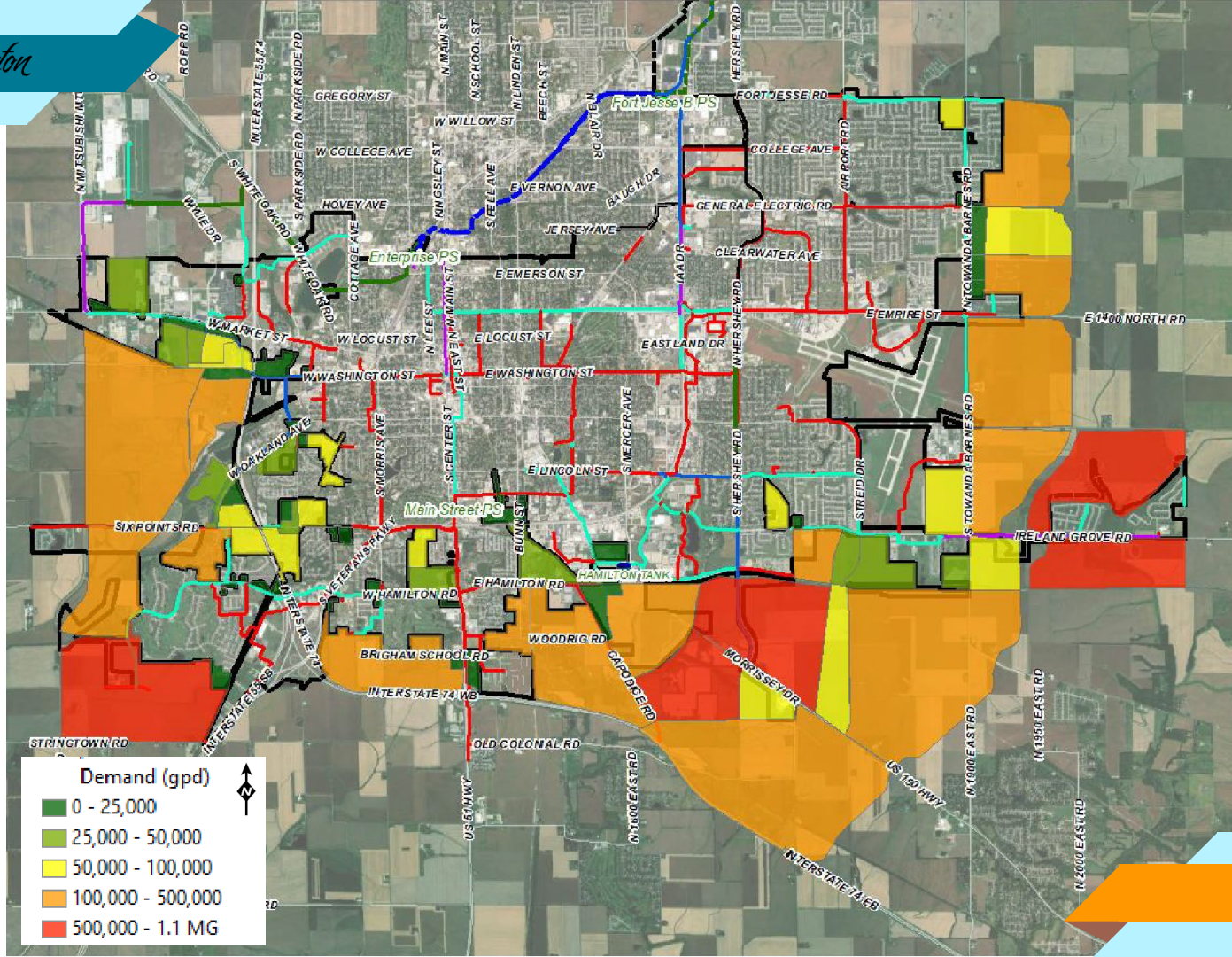


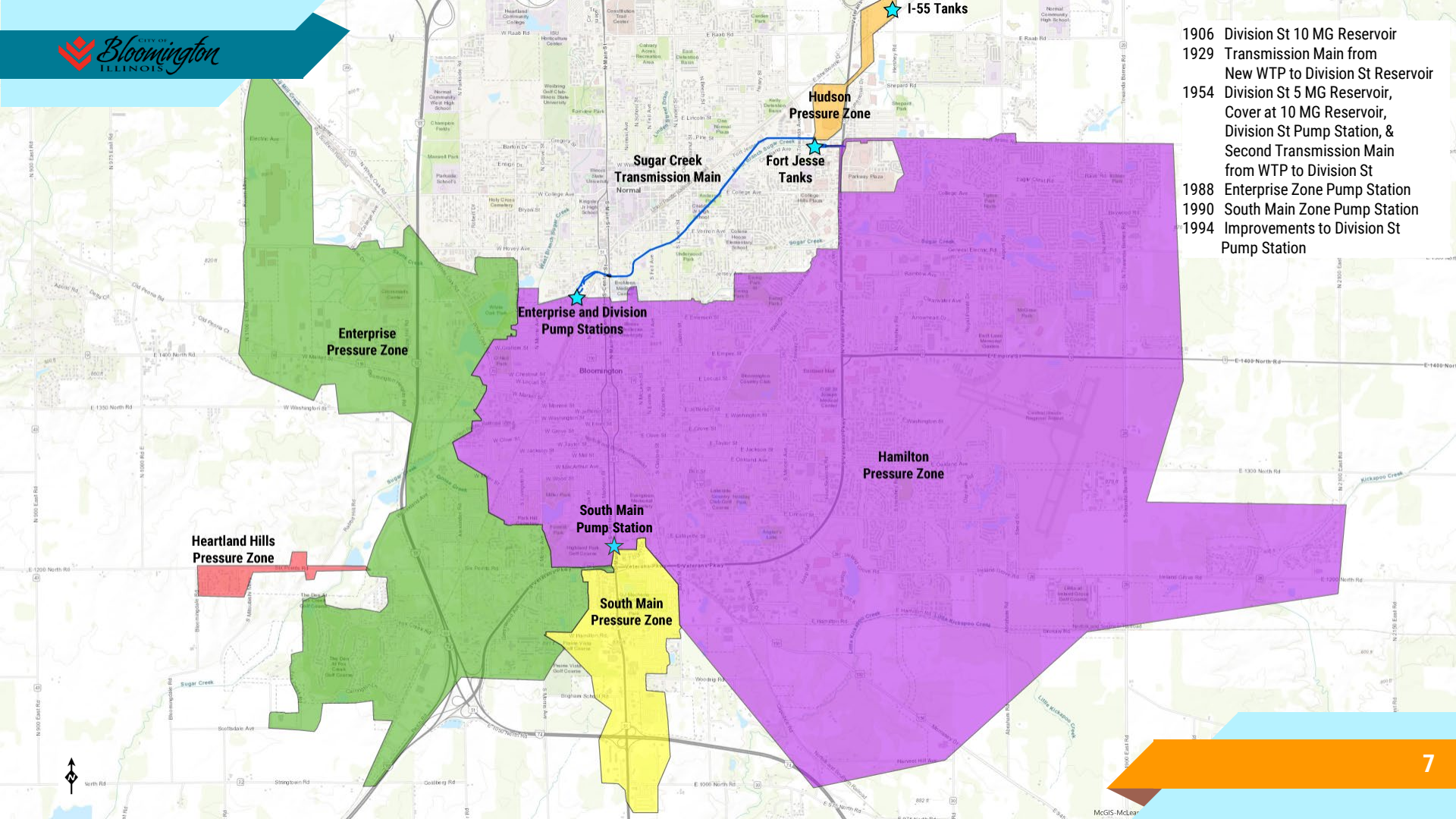
N 2100 East Rd



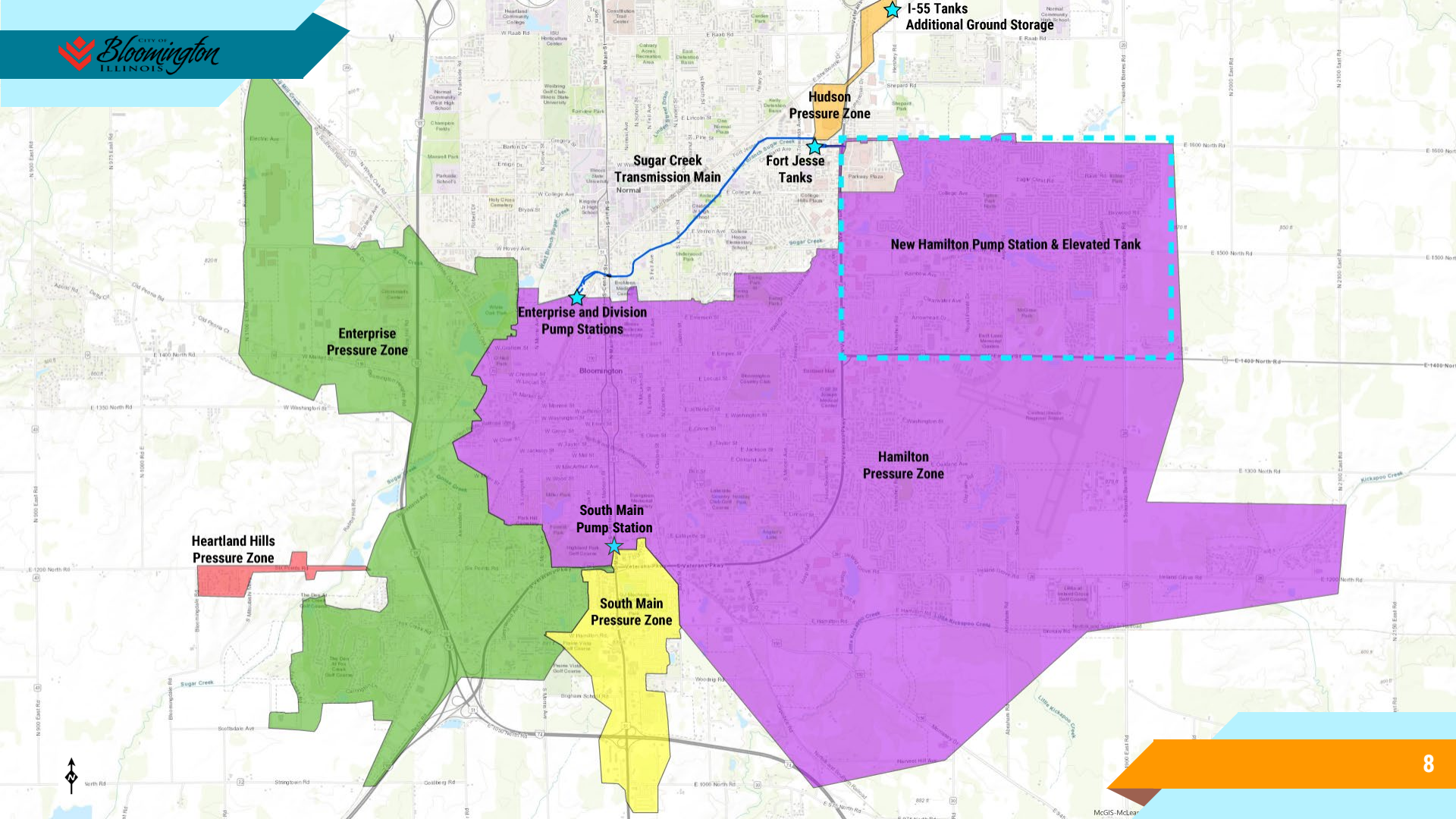


- Civic
- Commercial Activity Center
- Commercial Activity Center Not Annexed
- Conservation Neighborhood
- Employment Center
- Employment Center Not Annexed
- Future
- New Neighborhood
- Pre Existing Neighborhood Not Currently Annexed





- 1906 Division St 10 MG Reservoir
- 1929 Transmission Main from New WTP to Division St Reservoir
- 1954 Division St 5 MG Reservoir, Cover at 10 MG Reservoir, Division St Pump Station, & Second Transmission Main from WTP to Division St
- 1988 Enterprise Zone Pump Station
- 1990 South Main Zone Pump Station
- 1994 Improvements to Division St Pump Station



1-55 Tanks
Additional Ground Storage

Hudson
Pressure Zone

Sugar Creek
Transmission Main

Fort Jesse
Tanks

New Hamilton Pump Station & Elevated Tank

Enterprise
Pressure Zone

Enterprise and Division
Pump Stations

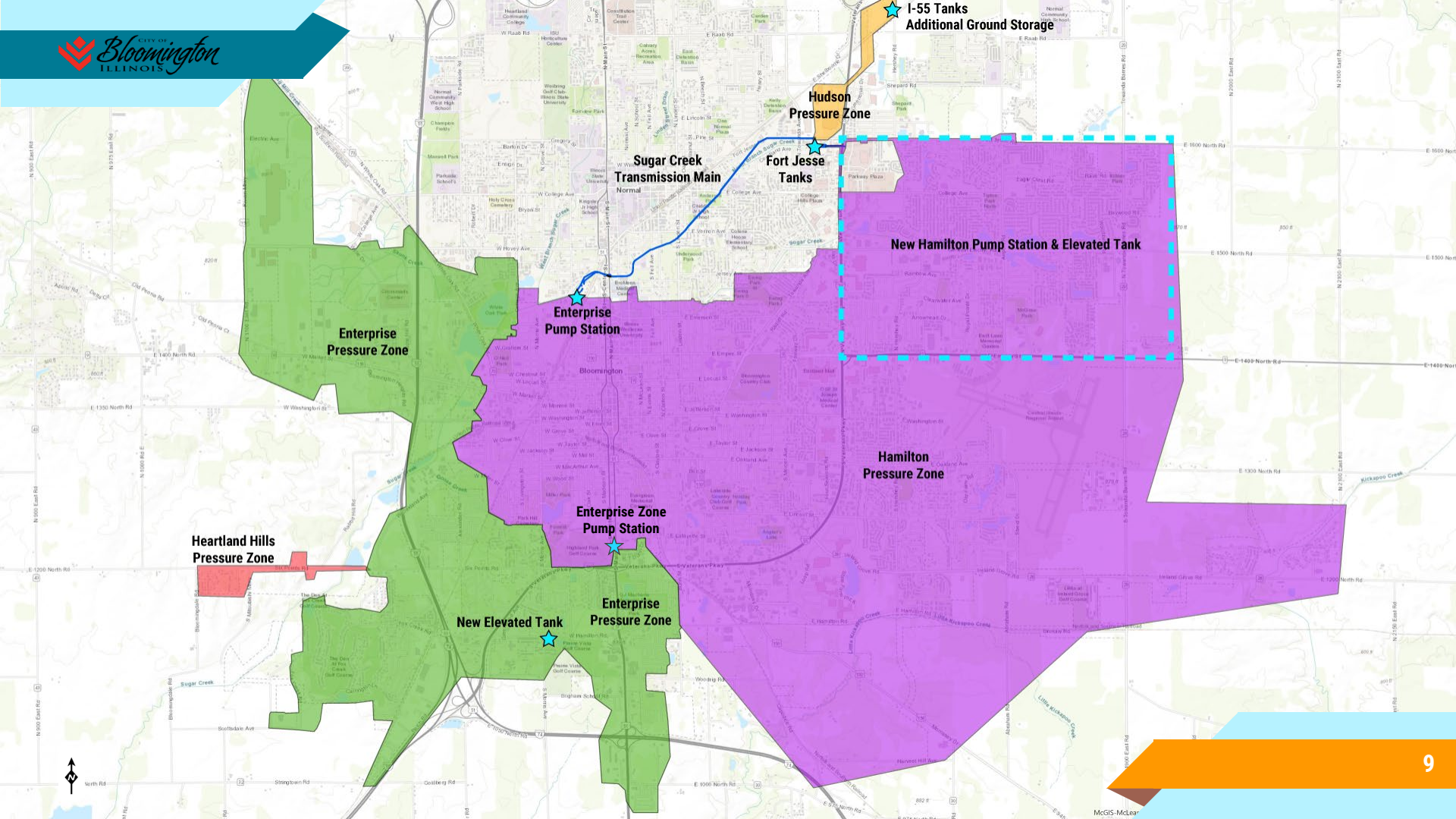
Hamilton
Pressure Zone

Heartland Hills
Pressure Zone

South Main
Pump Station

South Main
Pressure Zone





1-55 Tanks
Additional Ground Storage

Hudson Pressure Zone

Sugar Creek Transmission Main

Fort Jesse Tanks

New Hamilton Pump Station & Elevated Tank

Enterprise Pressure Zone

Enterprise Pump Station

Hamilton Pressure Zone

Enterprise Zone Pump Station

Heartland Hills Pressure Zone

New Elevated Tank

Enterprise Pressure Zone



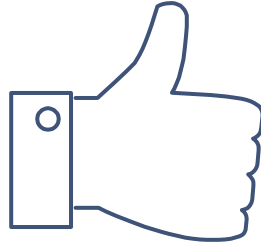
BENEFITS

- The proposed improvements are the most cost-effective and sustainable of the alternatives
- Elevated storage and central location will reduce pumping requirements and associated maintenance
- Higher elevation will reduce energy usage
- Water modeling showed improvement in quality of water service throughout the system



TONIGHT'S RECOMMENDATION

- Contract with Donohue & Associates, Inc.
 - ▶ Preliminary design for all improvements
 - ▶ Final design for Enterprise Zone elevated tank
 - ▶ Financial planning
 - ▶ Land acquisition and siting recommendations
 - ▶ Amount not to exceed \$1,497,400



THANKS!

Any questions?
Kevin Kothe, P.E.
Director of Public Works