

Credit As Type Summary Report (Trip Date)

Period IS 201901 OR -201901; AND Company IS City of Bloomington

City of Bloomington

<u>Credit Type/Credit Code</u>	<u>Count</u>	<u>Dollars</u>
Contractual Allowance		
W/O Above Caid Co Pay	139	\$6,113.47
Contractual Allow- Manual	4	\$1,817.49
Contractual Allow- Medicaid	543	\$263,043.40
Contractual Allow- Medicare	485	\$104,169.86
Totals For Type	1,171	\$ 375,144.22
Mandated Contractual Allow		
Mandated Contractual (CO253)	387	\$1,263.61
Totals For Type	387	\$ 1,263.61
Payment		
Electronic Payment	755	\$126,747.61
Electronic Rescind	4	\$0.00
Payment Check	610	\$96,728.57
Payment Credit Card	35	\$4,509.47
Rescind Payment	2	-\$28.51
Totals For Type	1,406	\$ 227,957.14
Refund		
Refund	1	-\$675.87
Totals For Type	1	-\$ 675.87
Write-off		
Write off City Agcy collection	127	\$54,582.41
Totals For Type	127	\$ 54,582.41
Company Totals	3,092	\$ 658,271.51

Credit As Type Summary Report (Trip Date)

Period IS 201901 OR -201901; AND Company IS City of Bloomington

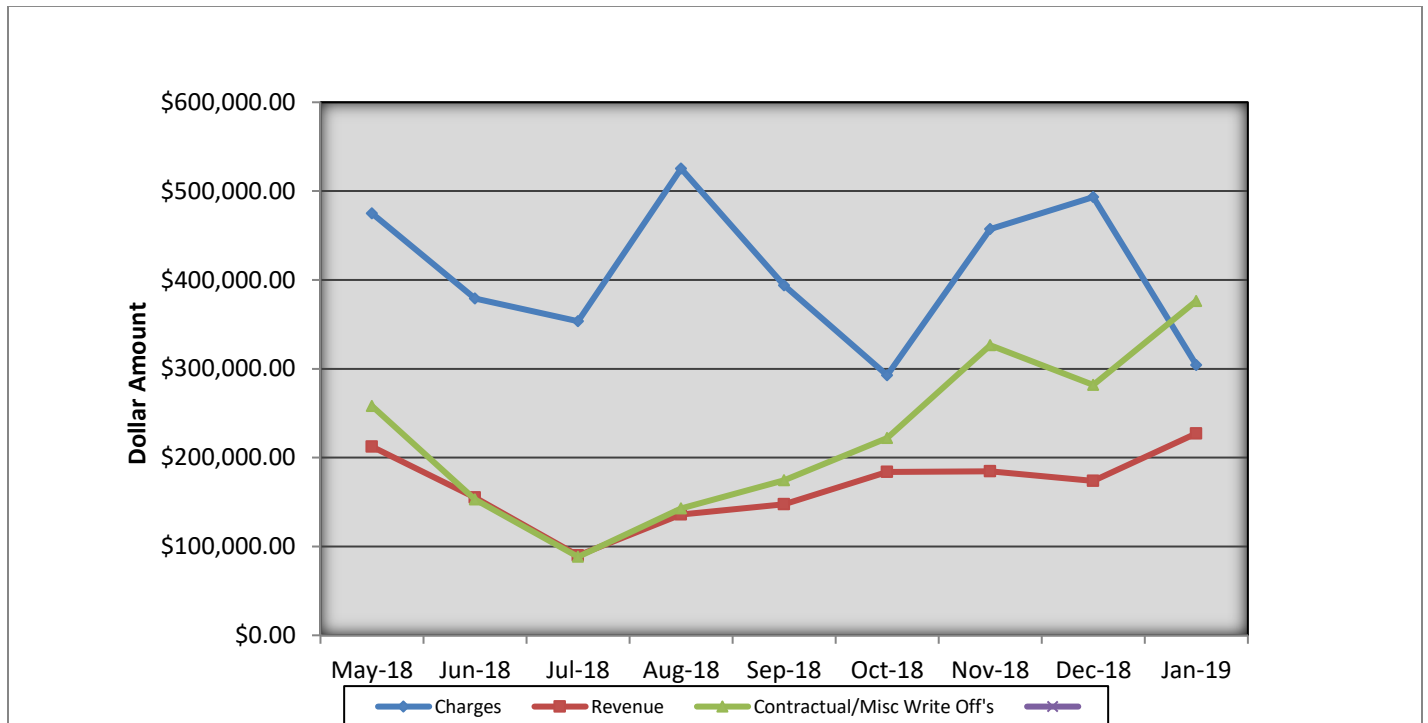
Grand Totals

3,092

\$ 658,271.51

Bloomington Fire Dept EMS Billing

Fiscal Year 2018/2019



- Charges represent billings for emergency transports, intercepts, and ambulance standby's.
- Revenue represents the amount of revenue collected for emergency transports, intercepts, and ambulance stand by's.
- Contractual/Miscellaneous Write Off's- are the combination of contractual allowances and miscellaneous write off's. Contractuals are the amounts above what federal and state mandated carriers allow for EMS services. Miscellaneous write off's include Financial Hardships, Bankruptcies, Small Balances, Workman's Compensation, and Incarcerated Patients.
- Bad Debt-Write off's on the accounts forwarded to a third party collection agency for further collection processing \$54,582.41

Totals Breakdown

Charge total-\$304,037.29

Revenue-\$227,281.27

Contractuals/Miscellaneous Write Offs-\$376,407.83



Bloomington Fire Dept.

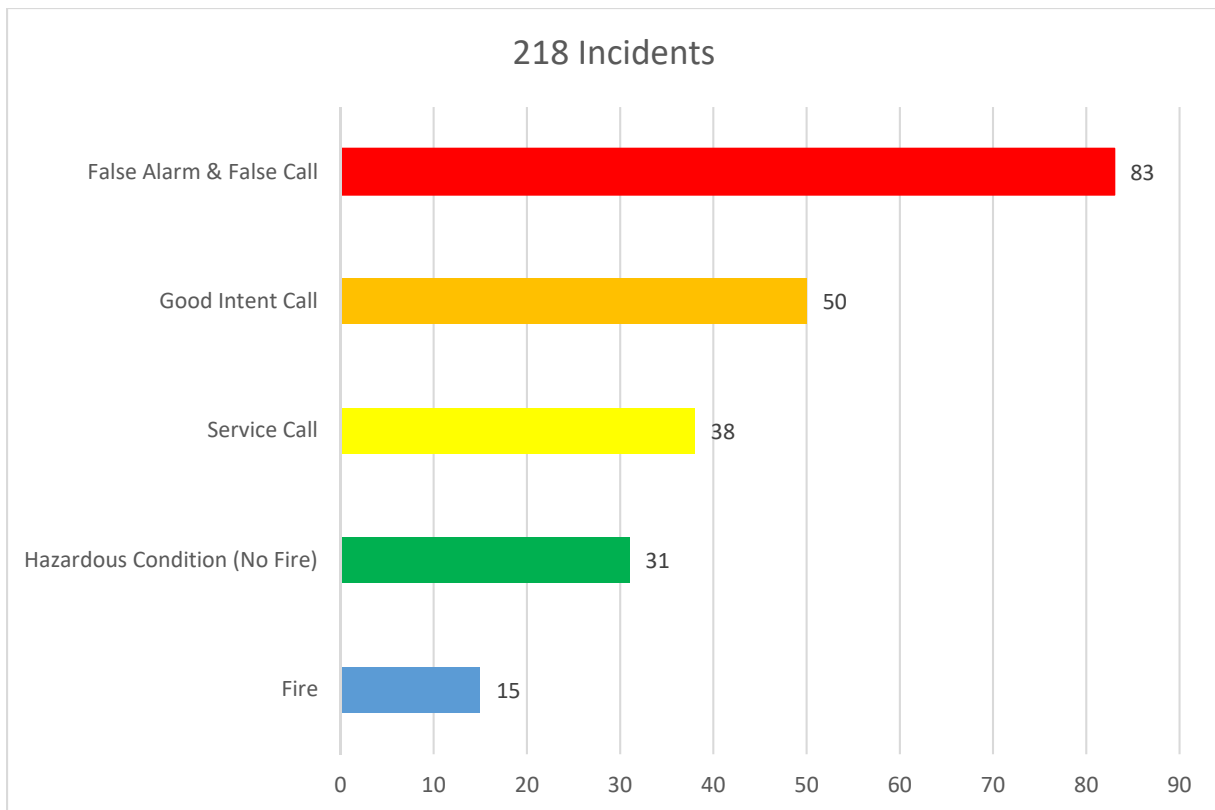
Monthly Fire Response Report

January 2019



Total Fire Response:	218
Total Structure Fires:	12
Total Estimated Dollar Loss (Property and Contents):	\$311,500

Top 5 Fire Responses





Bloomington Fire Dept.

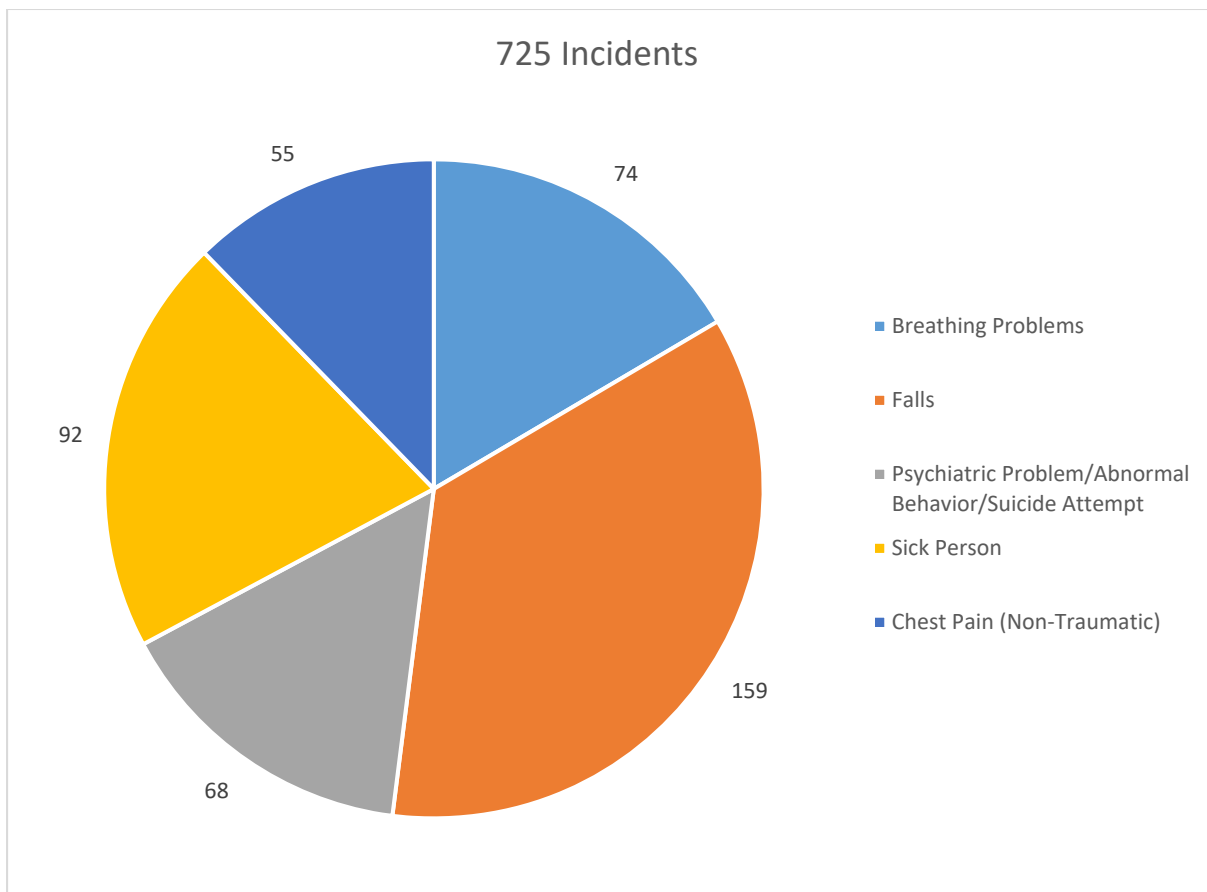
Monthly EMS Response Report

January 2019



Total EMS Response: 725
Total Patients: 713
Total Transported: 555

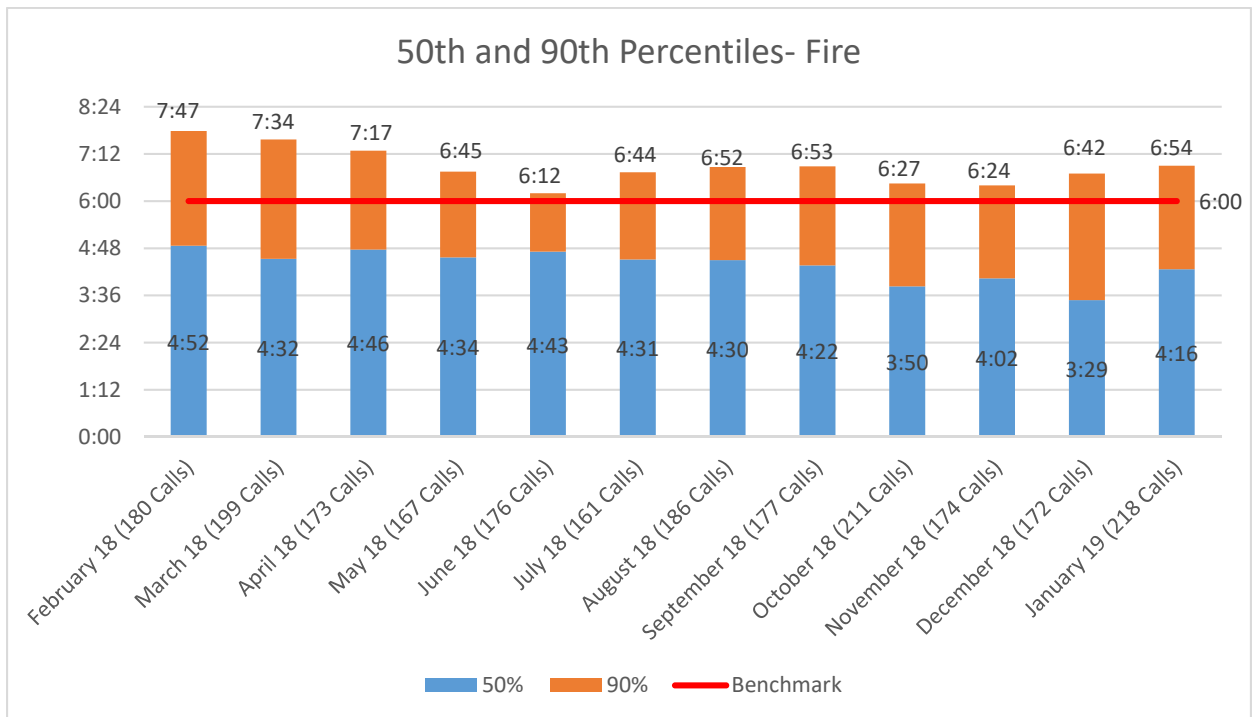
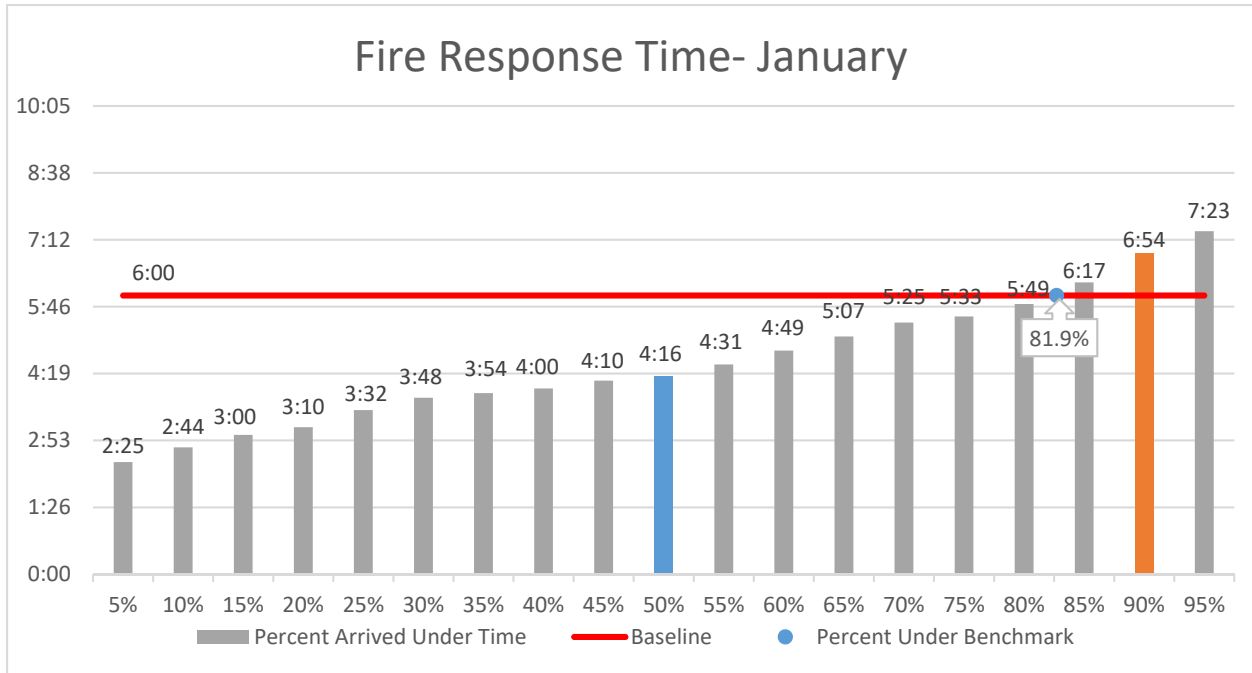
Top 5 EMS Responses





Bloomington Fire Dept.

Fire Response Times January 2019

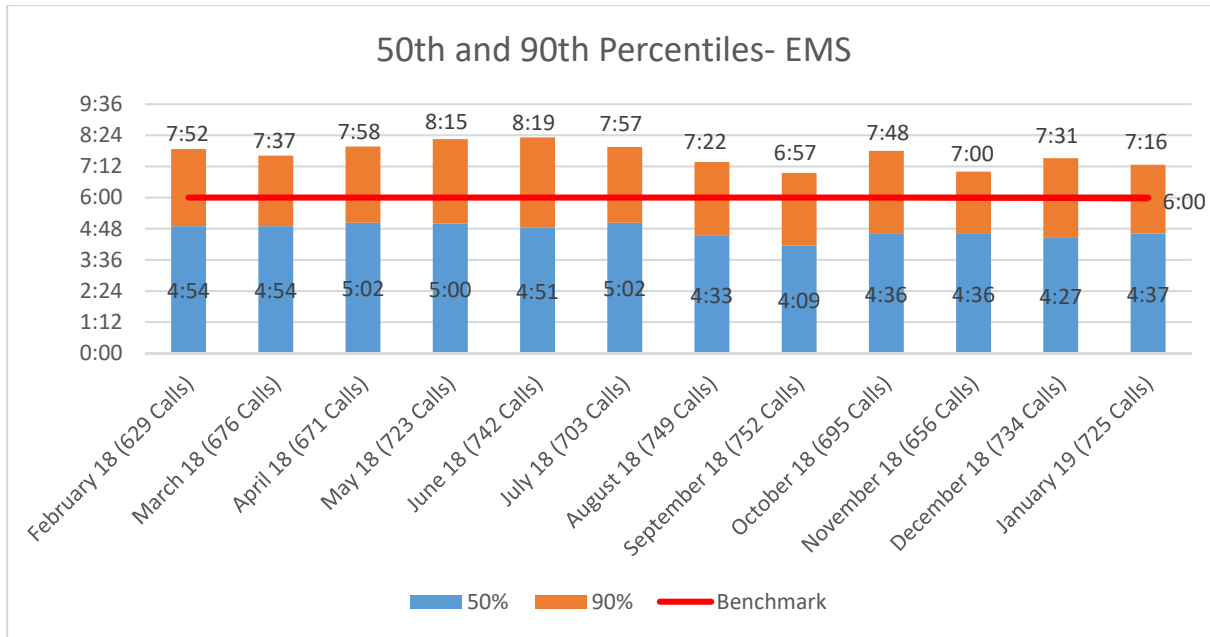
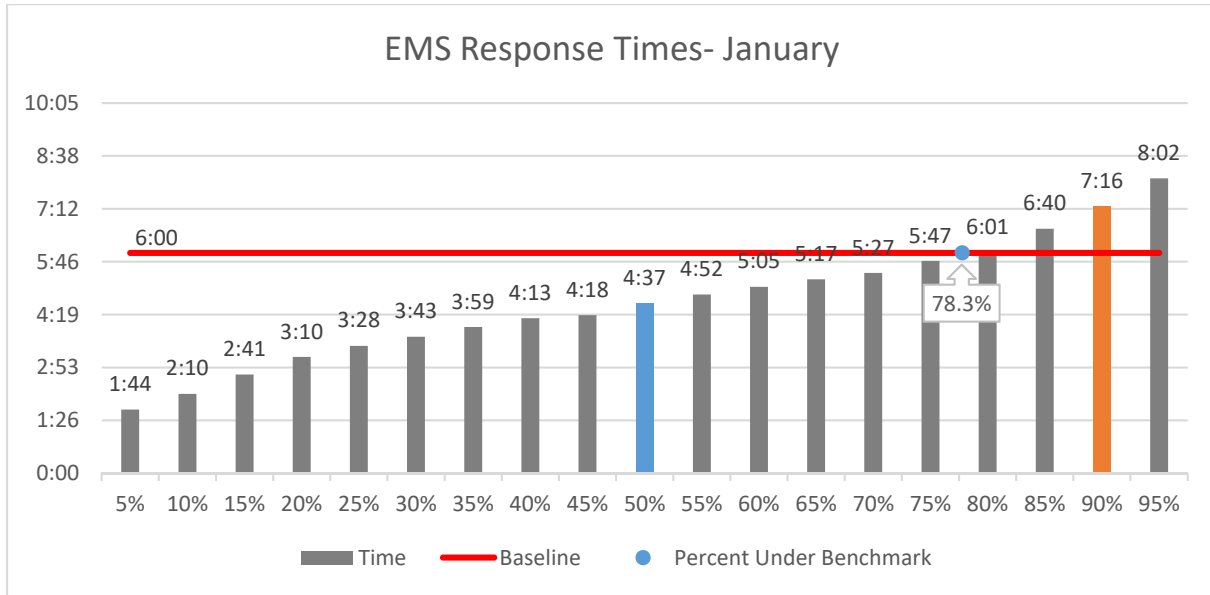




Bloomington Fire Dept.

EMS Response Times

January 2019



**Bloomington Comparison Report
January 2019**

	Current Month 01/2019	Previous Year 01/2018	Previous Month 12/2018
Charges			
BLS	256	256	411
ALS	142	158	231
ALS II	52	2	5
Charge Totals	\$304,037.29	\$308,397.31	\$493,243.40
Payments			
Payments	\$227,281.27	\$161,565.99	\$173,934.09
Bad Debt W/O	\$54,582.41	\$69,097.33	\$33,737.73
Cont/Misc W/O	\$376,407.83	\$139,410.50	\$281,828.90

January 2019 Operations Report

