

Charge Type Detail Report (Trip Date)

Period IS 201805 OR -201805; AND Company IS City of Bloomington

	<u>Count</u>	<u>Dollars</u>
City of Bloomington		
ALS Emergency		
BLFD ALS Emergency Base Rate	242.0	189,477.34
Totals For Type: ALS Emergency	242.0	\$ 189,477.34
ALS Emergency II		
BLFD ALS II Emergency Base Rat	6.0	5,268.72
Totals For Type: ALS Emergency II	6.0	\$ 5,268.72
BLS Emergency		
BLFD BLS Emergency Base Rate	379.0	247,252.02
Totals For Type: BLS Emergency	379.0	\$ 247,252.02
Mileage		
BLFD Mileage	1,778.4	27,850.24
Totals For Type: Mileage	1,778.4	\$ 27,850.24
Misc Fee		
Credit balance applied	43,200.0	432.00
Interest	27,521.0	275.21
Totals For Type: Misc Fee	70,721.0	\$ 707.21
Misc. Services		
BLFD ALS Intercept Fee	6.0	1,820.94
Totals For Type: Misc. Services	6.0	\$ 1,820.94
Misc. Supplies		
BLFD Oxygen	79.0	1,501.55
Totals For Type: Misc. Supplies	79.0	\$ 1,501.55
Treatment No Transport		
BLFD Treatment no transport	6.0	1,174.26
Totals For Type: Treatment No Transport	6.0	\$ 1,174.26

RescueNet™ Reporting

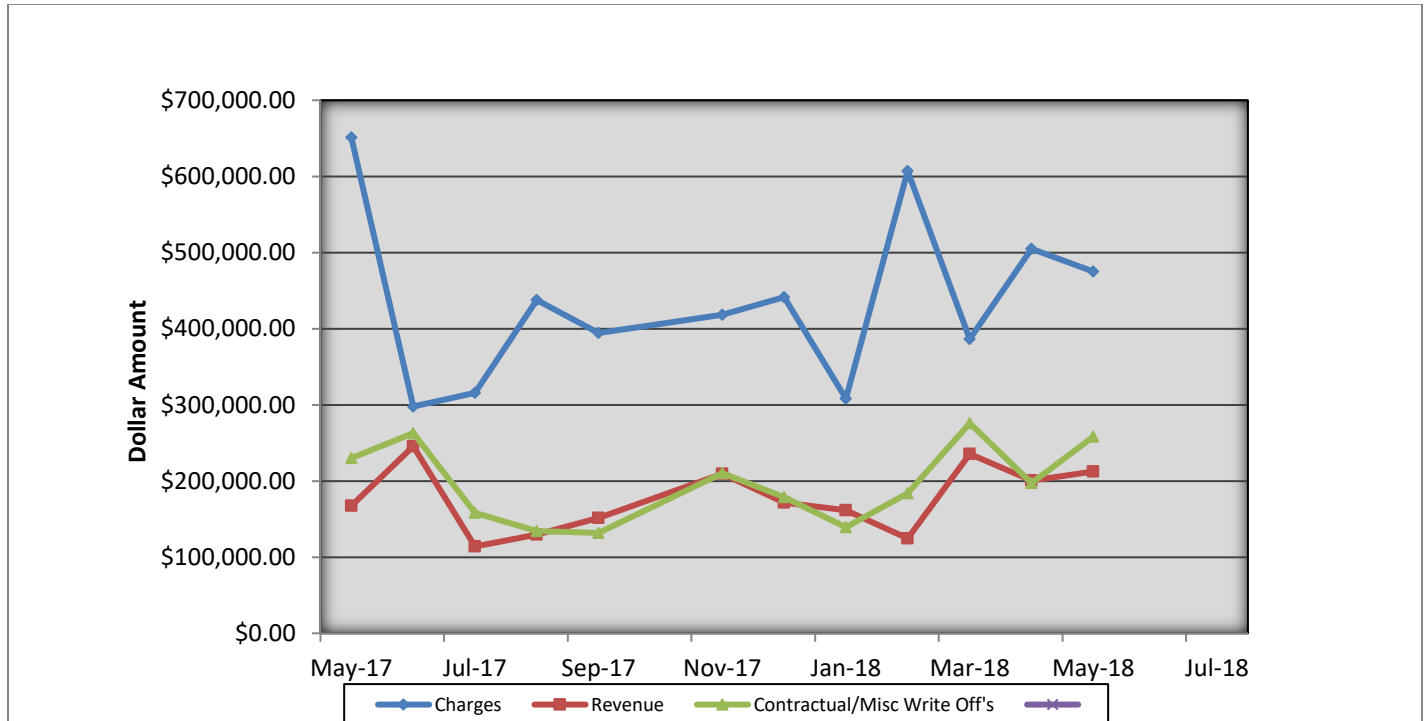
Charge Type Detail Report (Trip Date)

Period IS 201805 OR -201805; AND Company IS City of Bloomington

	<u>Count</u>	<u>Dollars</u>
Totals For Company: City of Bloomington	73217.4	\$475,052.28
Report Totals:	73,217.4	\$ 475,052.28

Bloomington Fire Dept EMS Billing

Fiscal Year 2017/2018



- Charges represent billings for emergency transports, intercepts, and ambulance standby's.
- Revenue represents the amount of revenue collected for emergency transports, intercepts, and ambulance stand by's.
- Contractual/Miscellaneous Write Off's- are the combination of contractual allowances and miscellaneous write off's. Contractuals are the amounts above what federal and state mandated carriers allow for EMS services. Miscellaneous write off's include Financial Hardships, Bankruptcies, Small Balances, Workman's Compensation, and Incarcerated Patients.
- Bad Debt-Write off's on the accounts forwarded to a third party collection agency for further collection processing \$19,117.73

Totals Breakdown

Charge total-\$475,052.28

Revenue-\$212,356.20

Contractuals/Miscellaneous Write Offs \$258,243.34

**Bloomington Comparison Report
May 2018**

	Current Month 05/2018	Previous Year 05/2017	Previous Month 04/2018
Charges			
BLS	379	560	402
ALS	242	325	263
ALS II	6	5	0
Charge Totals	\$475,052.28	\$650,950.60	\$505,110.15
Payments			
Payments	\$212,356.20	\$167,353.21	\$200,610.97
Bad Debt W/O	\$19,117.73	\$32,998.61	\$25,701.24
Cont/Misc W/O	\$258,243.34	\$229,996.72	\$197,175.06



Bloomington Fire Dept.

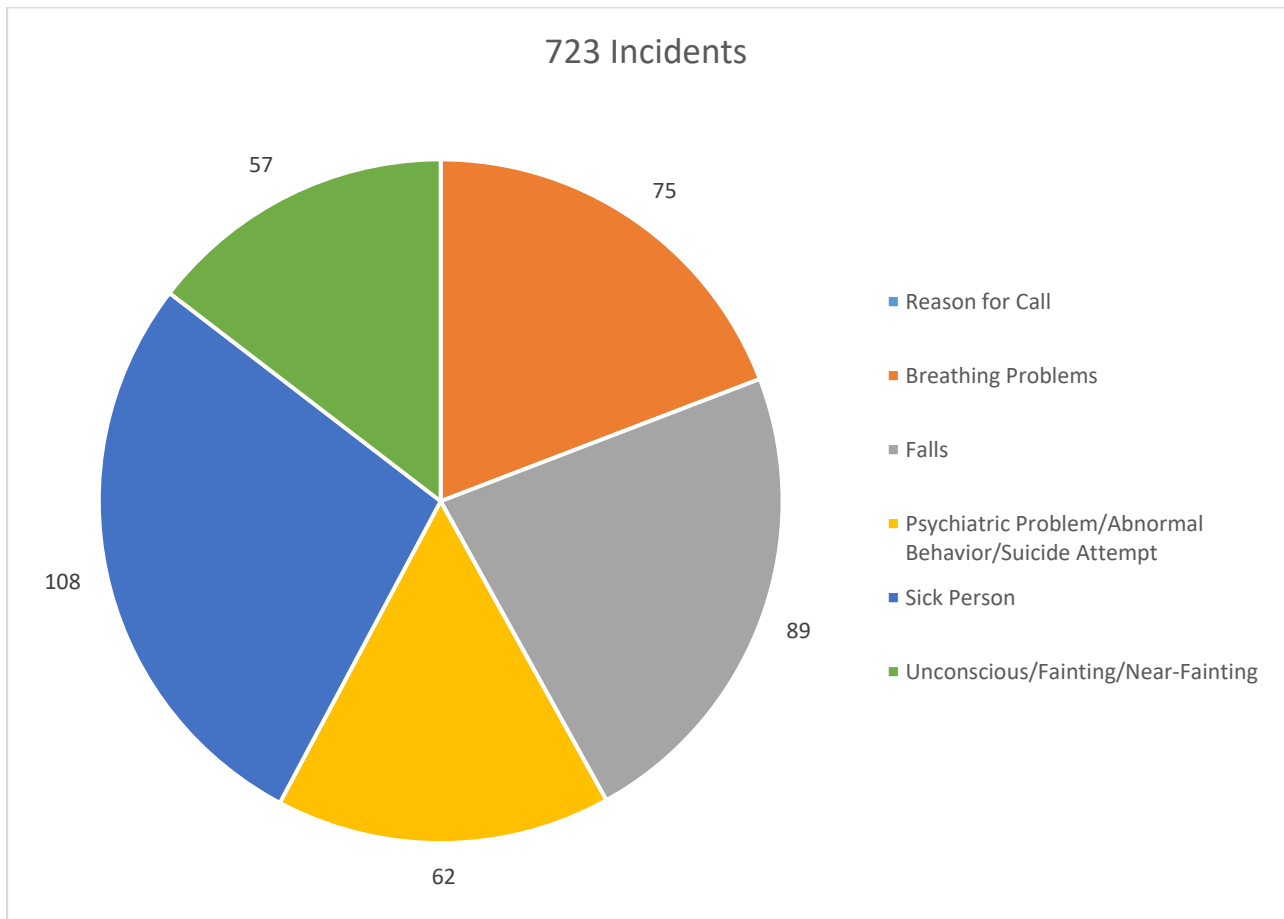
Monthly EMS Response Report

May 2018



Total EMS Response: 723
Total Patients: 668
Total Transported: 550

Top 5 EMS Responses





Bloomington Fire Dept.

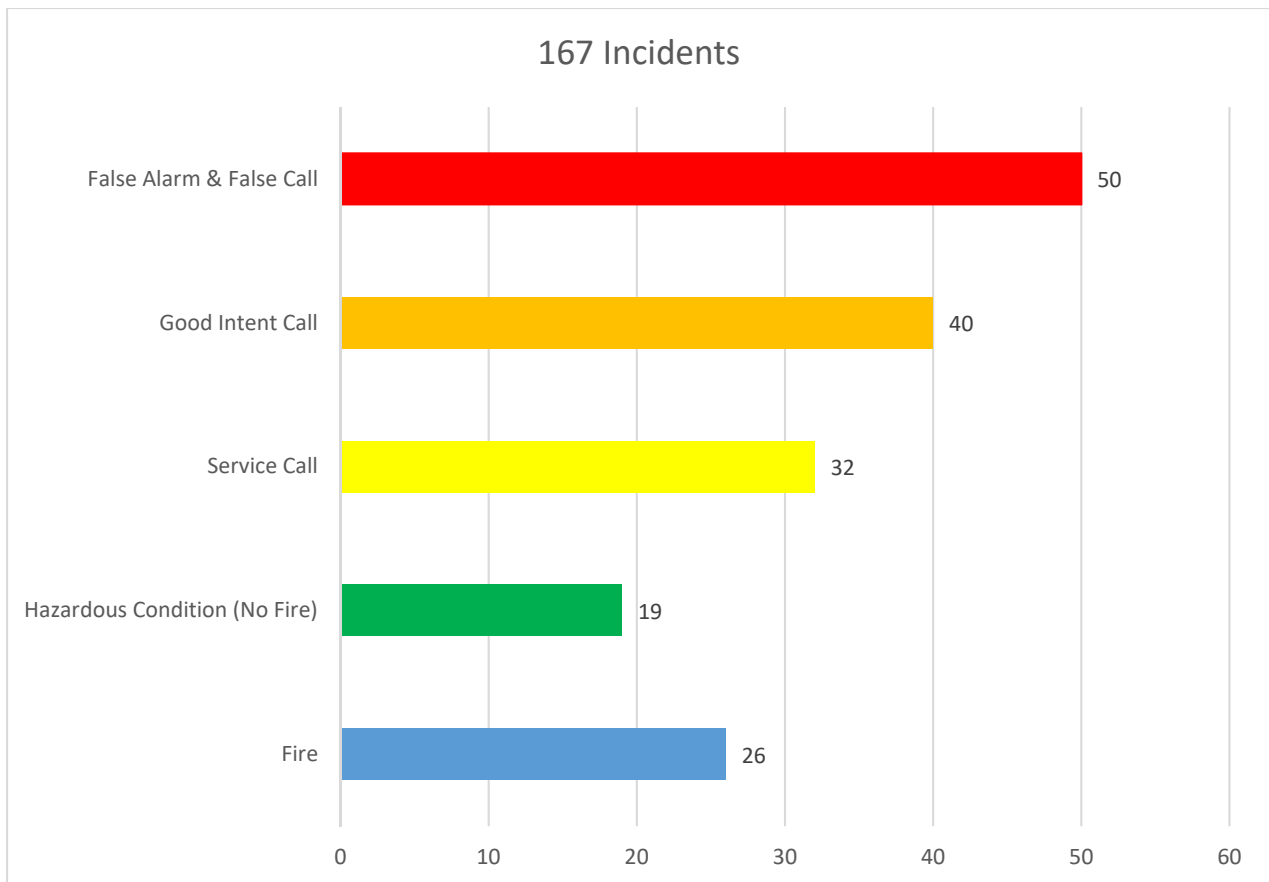
Monthly Fire Response Report

May 2018



Total Fire Response: 167
Total Structure Fires: 13
Total Estimated Dollar Loss (Property and Contents): \$111,725

Top 5 Fire Responses

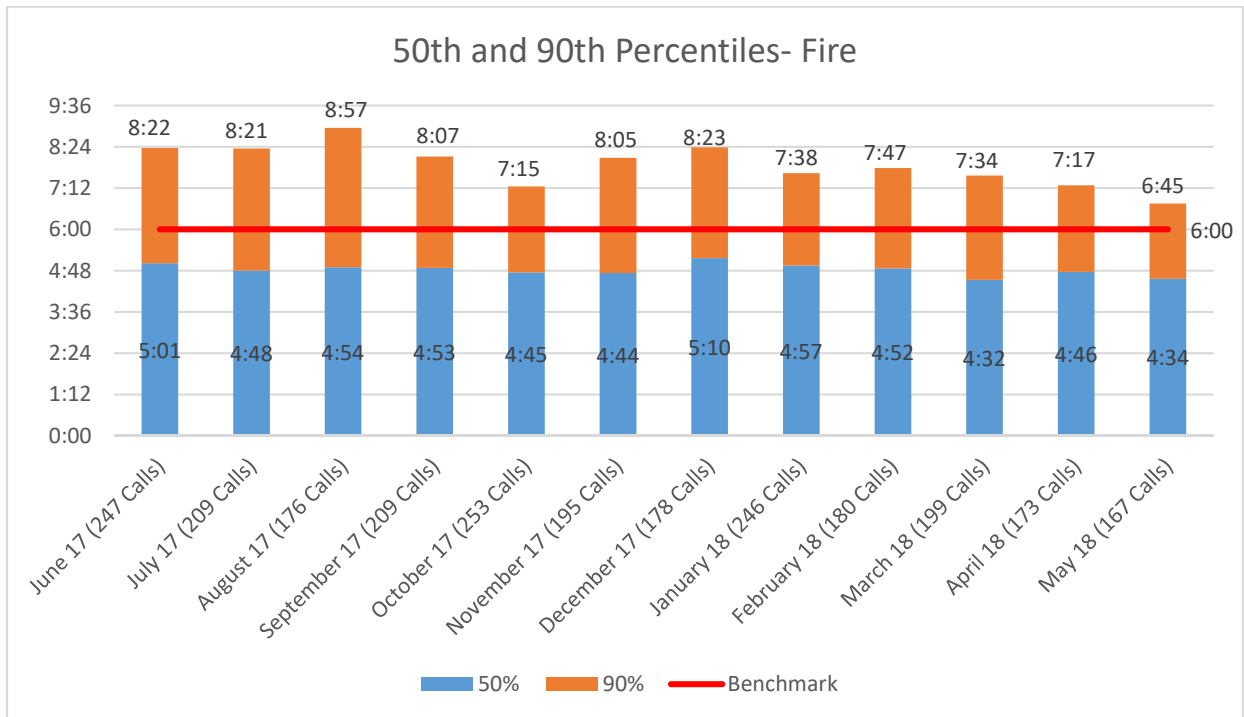
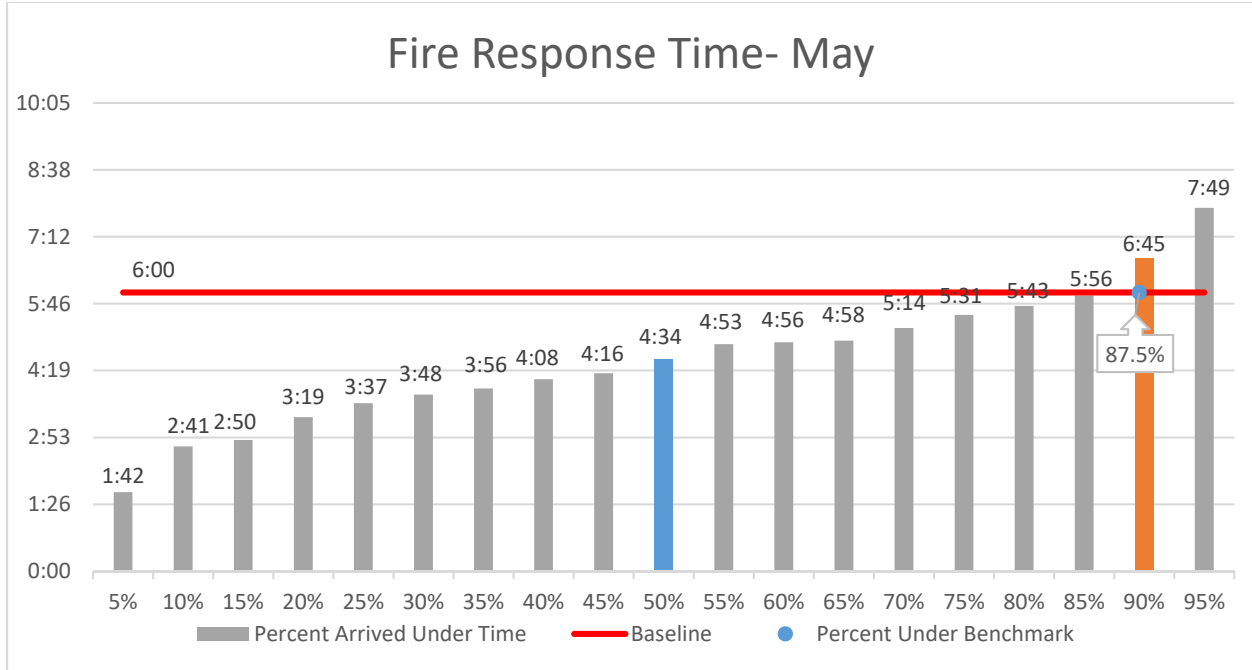




Bloomington Fire Dept.

Fire Response Times

May 2018





Bloomington Fire Dept.

EMS Response Times

May 2018

