

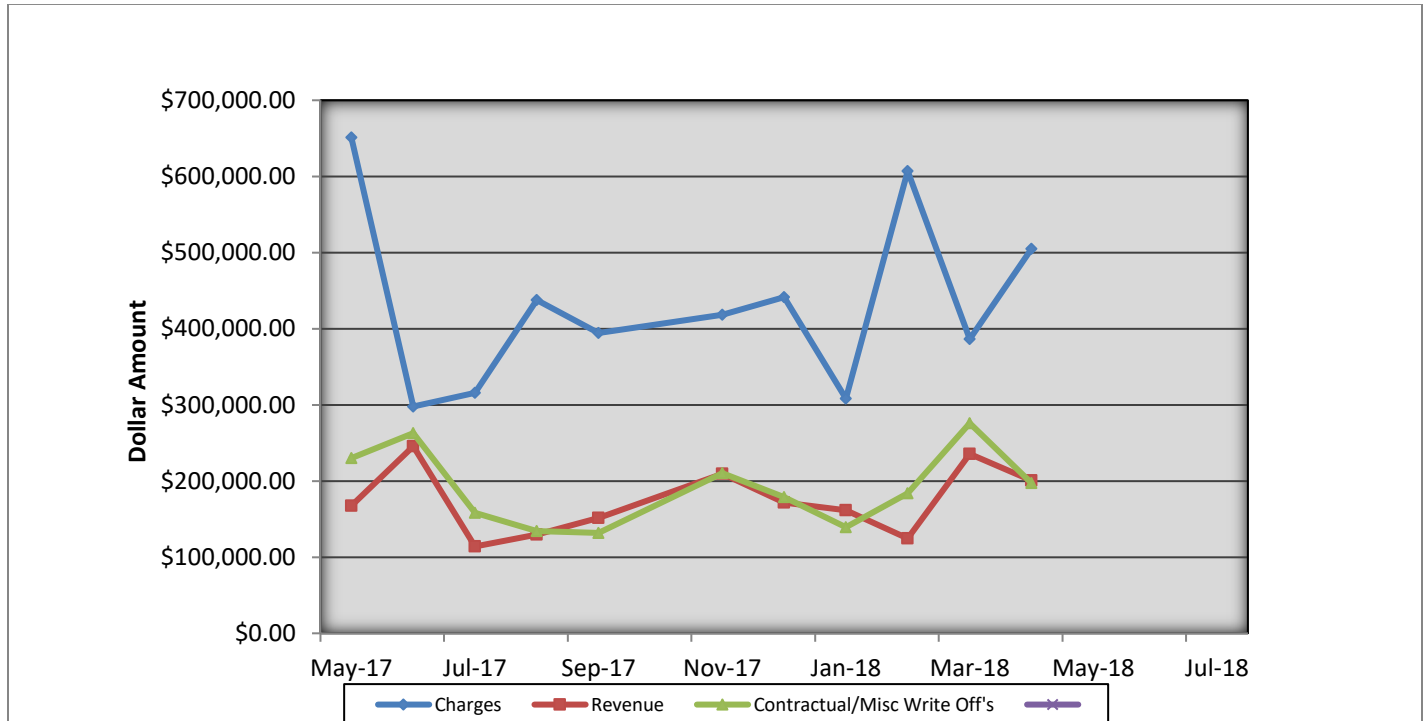
Charge Type Detail Report (Trip Date)

Period IS 201804 OR -201804; AND Company IS City of Bloomington

	<u>Count</u>	<u>Dollars</u>
City of Bloomington		
ALS Emergency		
BLFD ALS Emergency Base Rate	263.0	205,917.61
Totals For Type: ALS Emergency	263.0	\$ 205,917.61
BLS Emergency		
BLFD BLS Emergency Base Rate	402.0	262,256.76
Totals For Type: BLS Emergency	402.0	\$ 262,256.76
Mileage		
BLFD Mileage	1,884.4	29,510.95
Totals For Type: Mileage	1,884.4	\$ 29,510.95
Misc. Services		
BLFD ALS Intercept Fee	14.0	4,240.02
BLFD ALSII Intercept Fee	1.0	439.26
Totals For Type: Misc. Services	15.0	\$ 4,679.28
Misc. Supplies		
BLFD Oxygen	93.0	1,767.00
Totals For Type: Misc. Supplies	93.0	\$ 1,767.00
Treatment No Transport		
BLFD Treatment no transport	5.0	978.55
Totals For Type: Treatment No Transport	5.0	\$ 978.55
Totals For Company: City of Bloomington	2662.4	\$505,110.15
Report Totals:	2,662.4	\$ 505,110.15

Bloomington Fire Dept EMS Billing

Fiscal Year 2017/2018



- Charges represent billings for emergency transports, intercepts, and ambulance standby's.
- Revenue represents the amount of revenue collected for emergency transports, intercepts, and ambulance stand by's.
- Contractual/Miscellaneous Write Off's- are the combination of contractual allowances and miscellaneous write off's. Contractuals are the amounts above what federal and state mandated carriers allow for EMS services. Miscellaneous write off's include Financial Hardships, Bankruptcies, Small Balances, Workman's Compensation, and Incarcerated Patients.
- Bad Debt-Write off's on the accounts forwarded to a third party collection agency for further collection processing \$25,701.24

Totals Breakdown

Charge total-\$505,110.15

Revenue-\$200,610.97

Contractuals/Miscellaneous Write Offs \$197,175.06

**Bloomington Comparison Report
April 2018**

	Current Month 04/2018	Previous Year 04/2017	Previous Month 03/2018
Charges			
BLS	402	399	338
ALS	263	211	169
ALS II	0	3	7
Charge Totals	\$505,110.15	\$449,402.40	\$386,463.35
Payments			
Payments	\$200,610.97	\$197,458.16	\$235,591.01
Bad Debt W/O	\$25,701.24	\$35,581.57	\$32,715.16
Cont/Misc W/O	\$197,175.06	\$260,317.25	\$275,877.08



Bloomington Fire Dept.

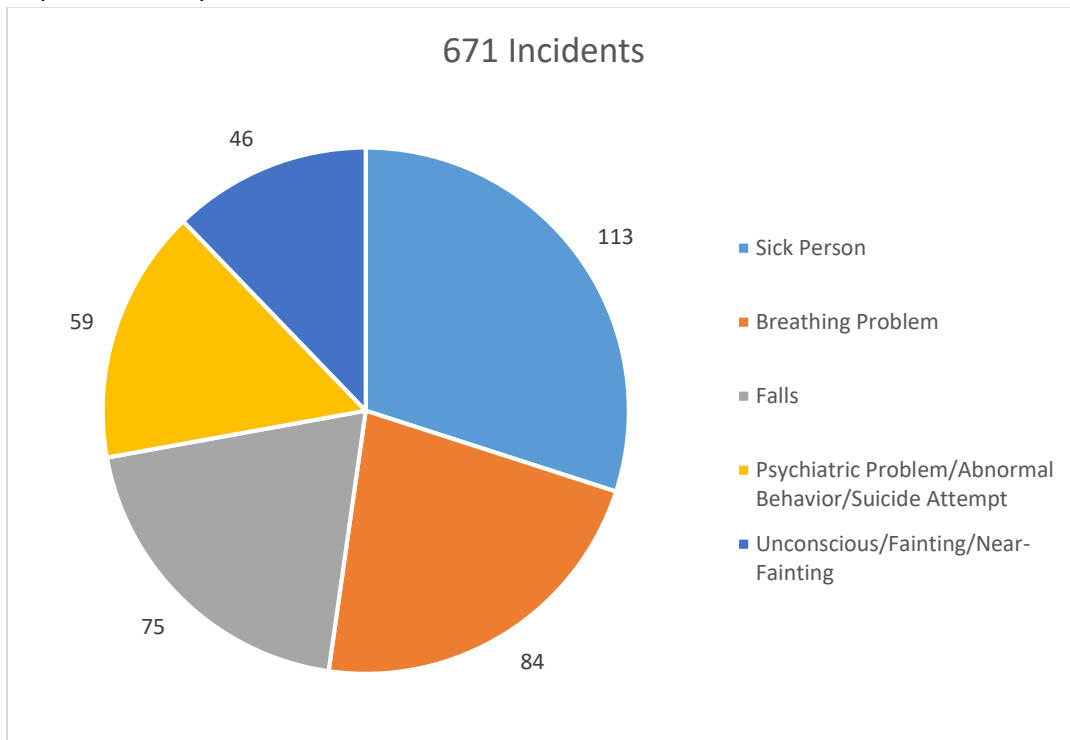
Monthly EMS Response Report

April 2018



Total EMS Response: 671
Total Patients: 640
Total Transported: 549

Top 5 EMS Responses





Bloomington Fire Dept.

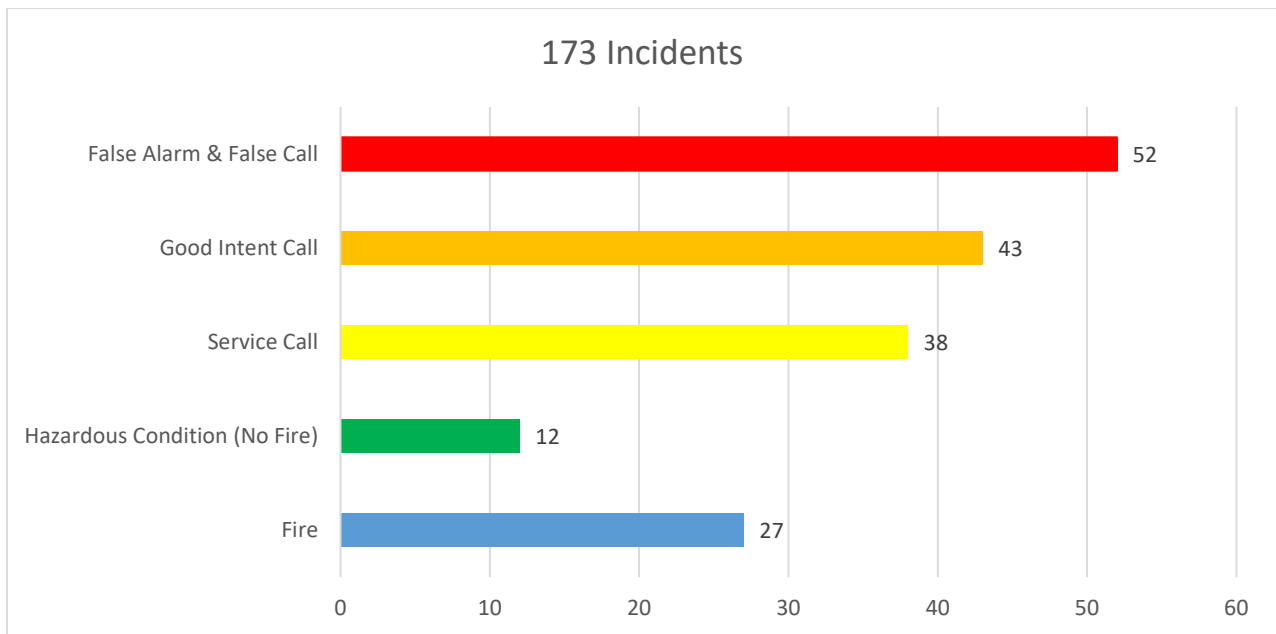
Monthly Fire Response Report

April 2018



Total Fire Response:	173
Total Structure Fires:	17
Total Estimated Dollar Loss (Property and Contents):	\$326,550

Top 5 Fire Responses

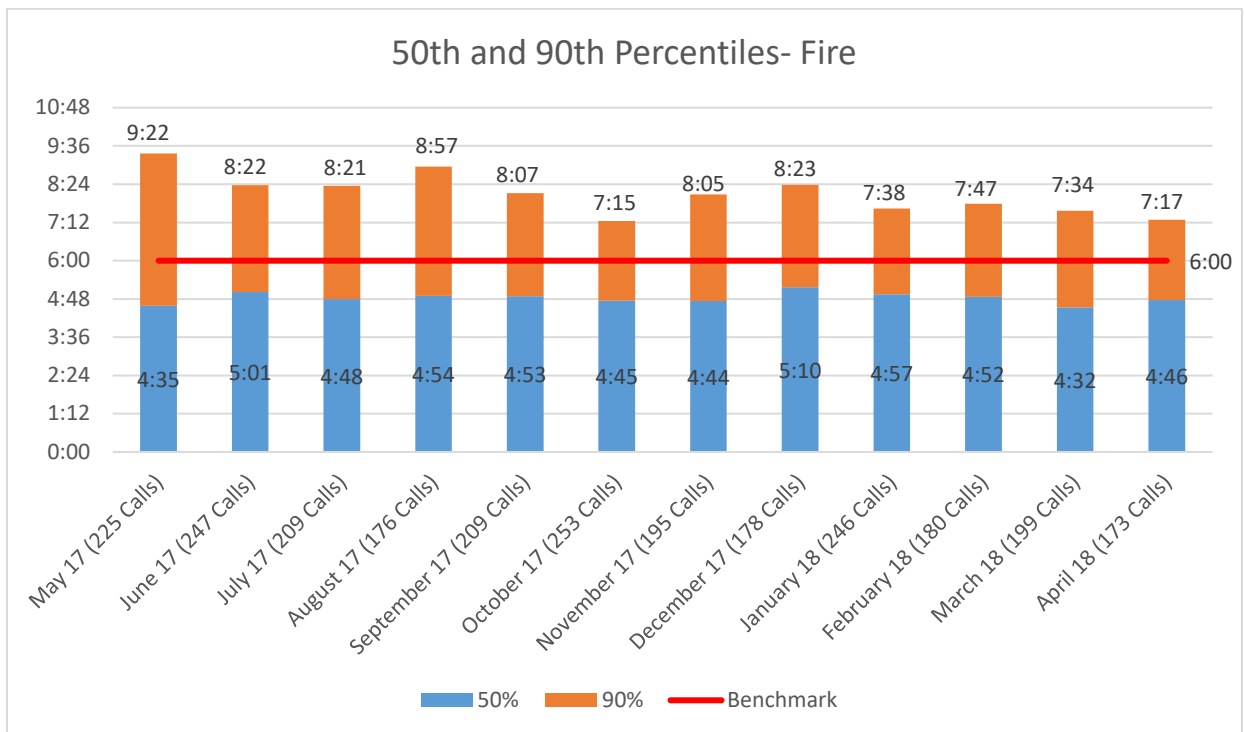
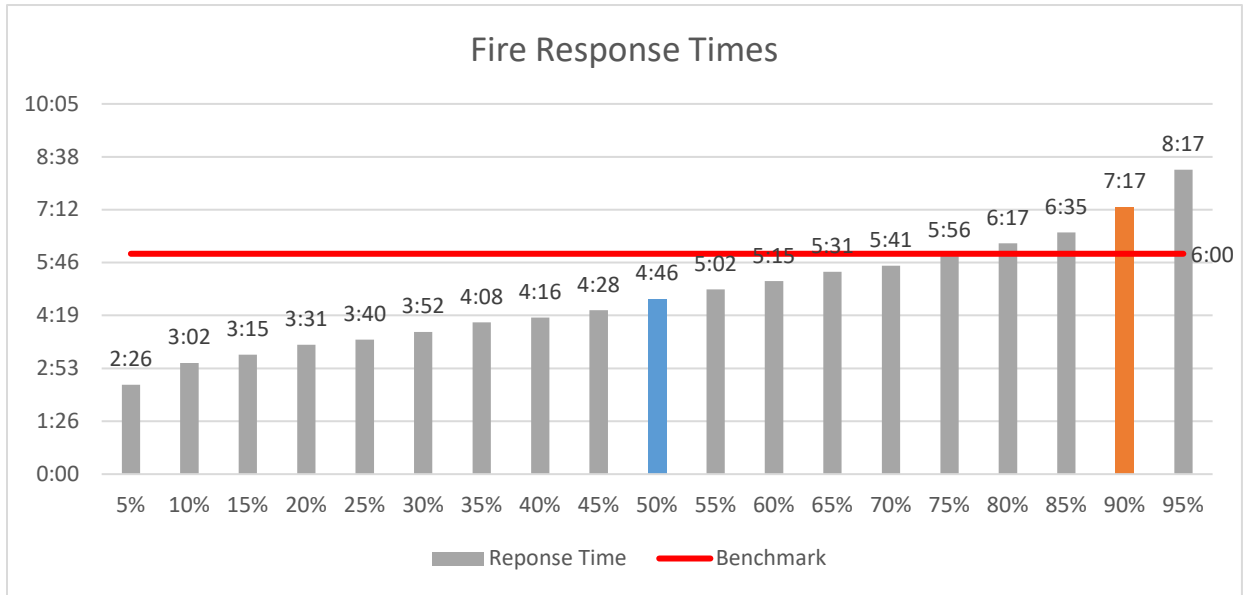




Bloomington Fire Dept.

Fire Response Times

April 2018





Bloomington Fire Dept.

EMS Response Times

April 2018

