

Charge Type Detail Report (Trip Date)

Period IS 201803 OR -201803; AND Company IS City of Bloomington

	<u>Count</u>	<u>Dollars</u>
City of Bloomington		
ALS Emergency		
BLFD ALS Emergency Base Rate	169.0	132,327.83
Totals For Type: ALS Emergency	169.0	\$ 132,327.83
ALS Emergency II		
BLFD ALS II Emergency Base Rat	7.0	6,146.84
Totals For Type: ALS Emergency II	7.0	\$ 6,146.84
BLS Emergency		
BLFD BLS Emergency Base Rate	338.0	220,504.44
Totals For Type: BLS Emergency	338.0	\$ 220,504.44
Mileage		
BLFD Mileage	1,463.2	22,914.32
Totals For Type: Mileage	1,463.2	\$ 22,914.32
Misc Fee		
Credit balance applied	1.0	0.01
Interest	466.0	4.66
Totals For Type: Misc Fee	467.0	\$ 4.67
Misc. Services		
BLFD ALS Intercept Fee	9.0	2,731.41
BLFD Returned check fee	1.0	25.00
Totals For Type: Misc. Services	10.0	\$ 2,756.41
Misc. Supplies		
BLFD Oxygen	54.0	1,026.00
Totals For Type: Misc. Supplies	54.0	\$ 1,026.00
Treatment No Transport		
BLFD Treatment no transport	4.0	782.84
Totals For Type: Treatment No Transport	4.0	\$ 782.84

RescueNet™ Reporting

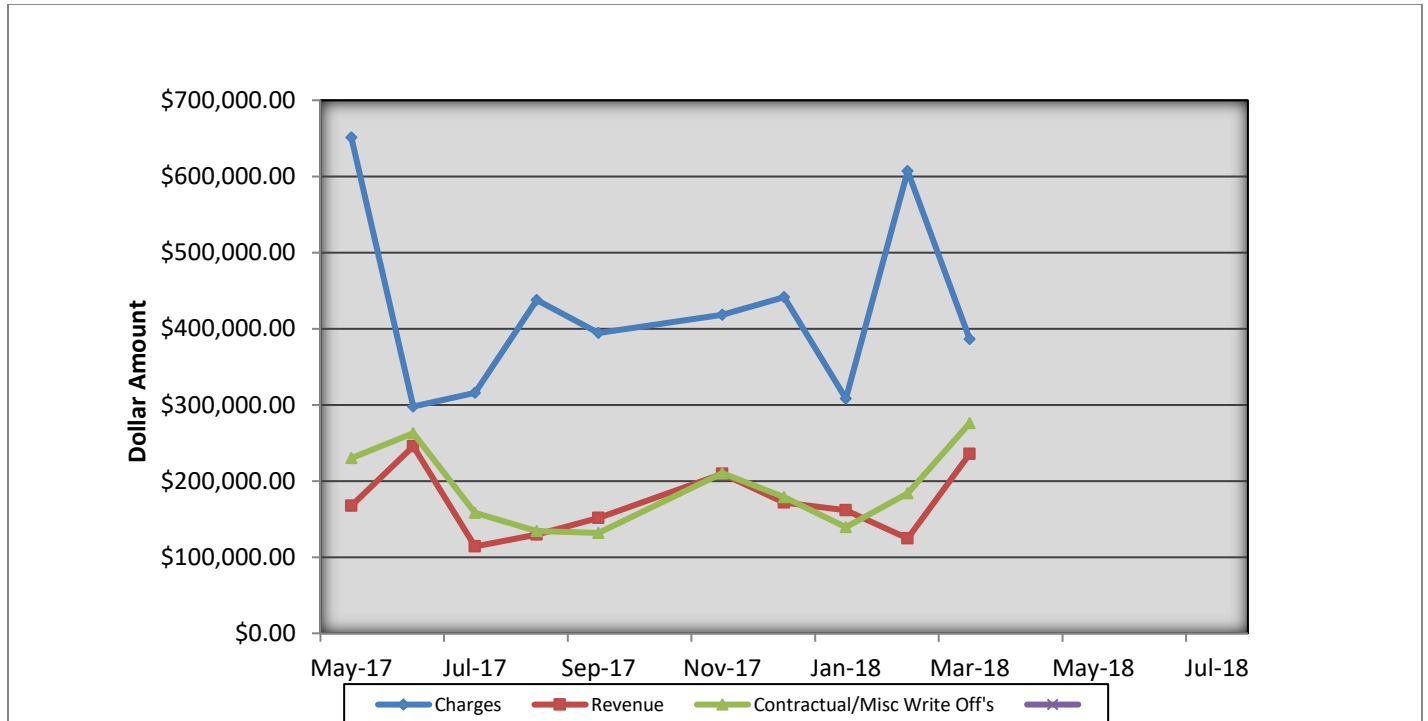
Charge Type Detail Report (Trip Date)

Period IS 201803 OR -201803; AND Company IS City of Bloomington

	<u>Count</u>	<u>Dollars</u>
City of Bloomington (cont.)		
Totals For Company: City of Bloomington	2512.2	\$386,463.35
Report Totals:	2,512.2	\$ 386,463.35

Bloomington Fire Dept EMS Billing

Fiscal Year 2017/2018



- Charges represent billings for emergency transports, intercepts, and ambulance standby's.
- Revenue represents the amount of revenue collected for emergency transports, intercepts, and ambulance stand by's.
- Contractual/Miscellaneous Write Off's- are the combination of contractual allowances and miscellaneous write off's. Contractuals are the amounts above what federal and state mandated carriers allow for EMS services. Miscellaneous write off's include Financial Hardships, Bankruptcies, Small Balances, Workman's Compensation, and Incarcerated Patients.
- Bad Debt-Write off's on the accounts forwarded to a third party collection agency for further collection processing \$32,715.16

Totals Breakdown

Charge total-\$386,463.35

Revenue-\$235,591.01

Contractuals/Miscellaneous Write Offs \$275,877.08

**Bloomington Comparison Report
March 2018**

	Current Month 03/2018	Previous Year 03/2017	Previous Month 02/2018
Charges			
BLS	338	395	495
ALS	169	226	305
ALS II	7	4	1
Charge Totals	\$386,463.35	\$462,189.84	\$607,009.07
Payments			
Payments	\$235,591.01	\$236,521.53	\$124,633.89
Bad Debt W/O	\$32,715.16	\$19,587.63	\$48,397.26
Cont/Misc W/O	\$275,877.08	\$265,375.08	\$184,036.46



Bloomington Fire Dept.

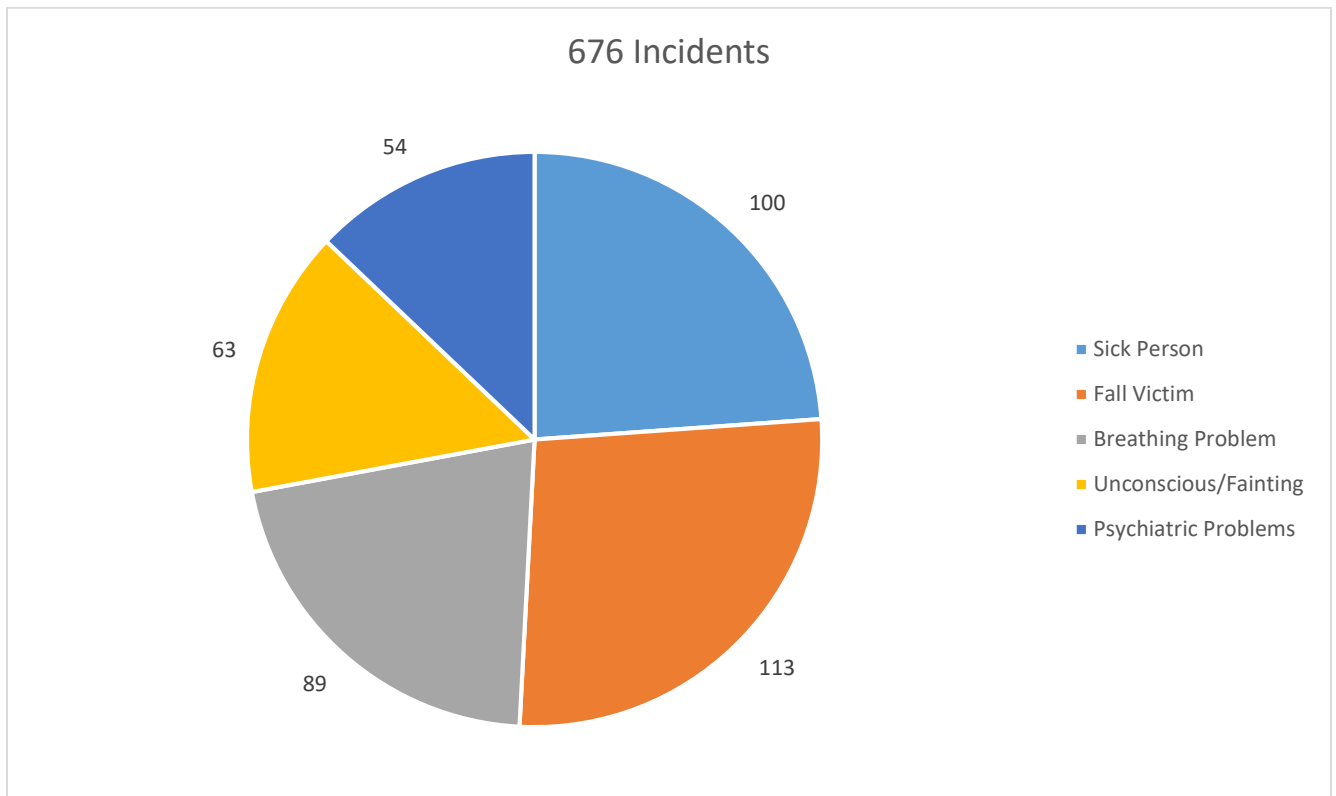
Monthly EMS Response Report

March 2018



Total EMS Response: 676
Total Patients: 624
Total Transported: 543

Top 5 EMS Responses





Bloomington Fire Dept.

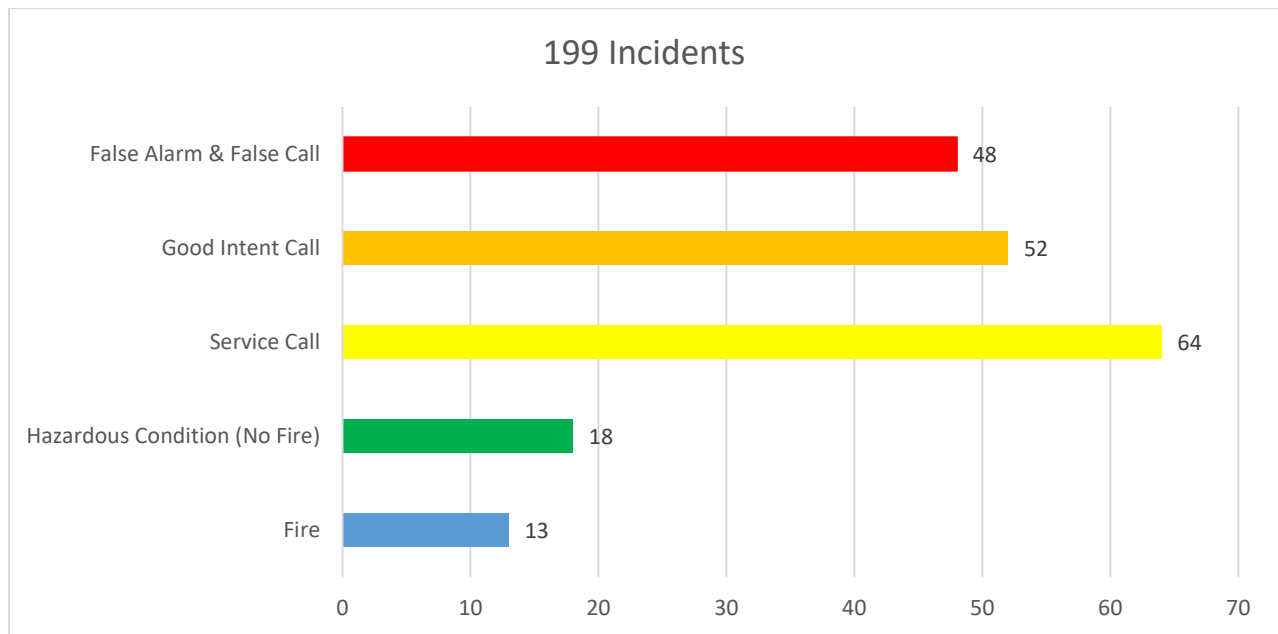
Monthly Fire Response Report

March 2018



Total Fire Response:	199
Total Structure Fires:	7
Total Estimated Dollar Loss (Property and Contents):	\$35,650

Top 5 Fire Responses

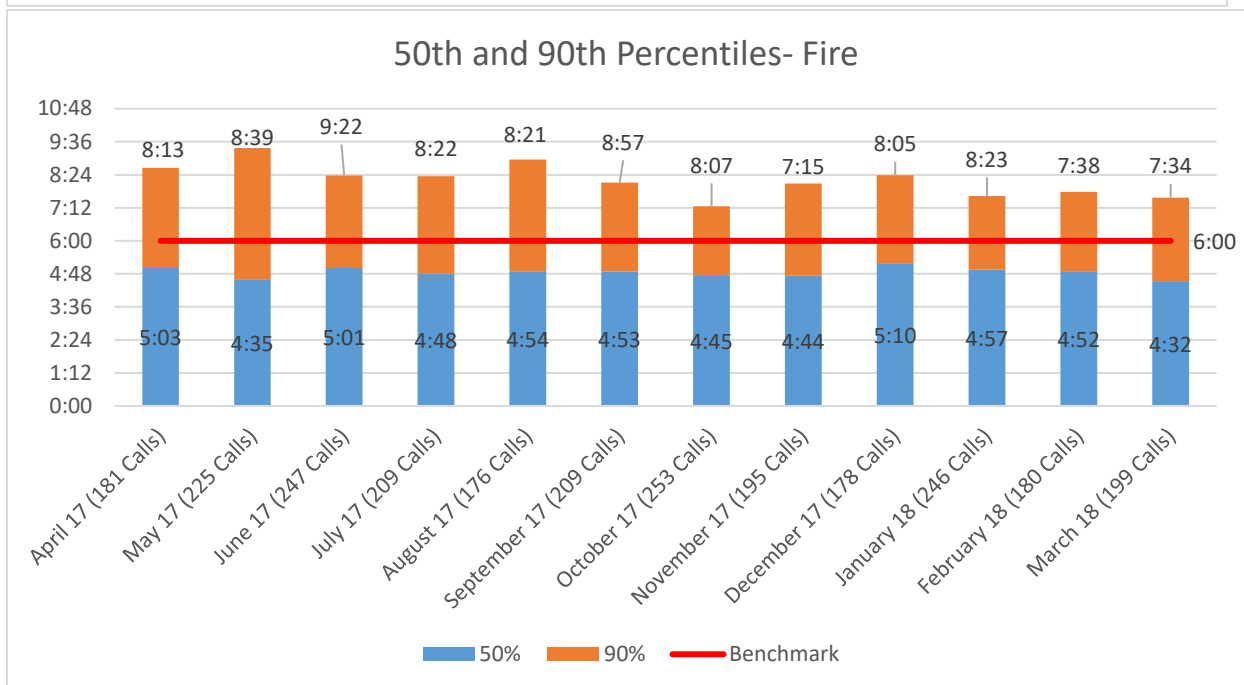
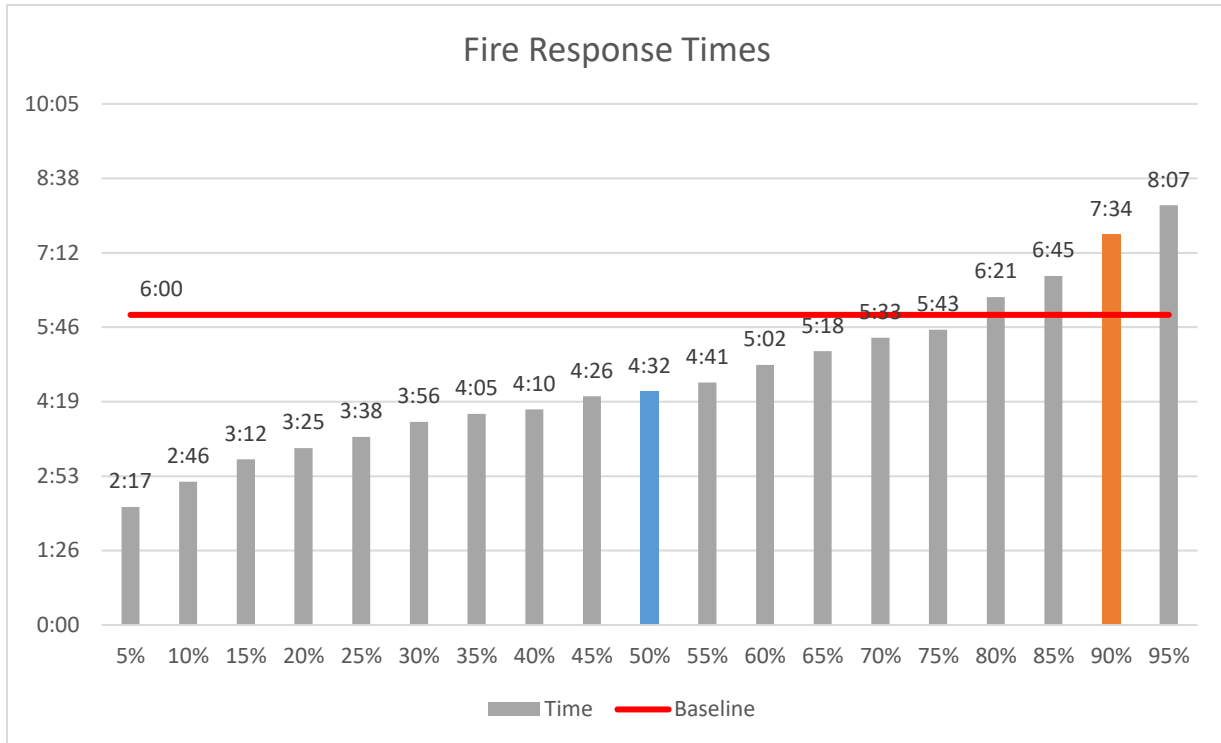




Bloomington Fire Dept.

Fire Response Times

March 2018





Bloomington Fire Dept.

EMS Response Times

March 2018

