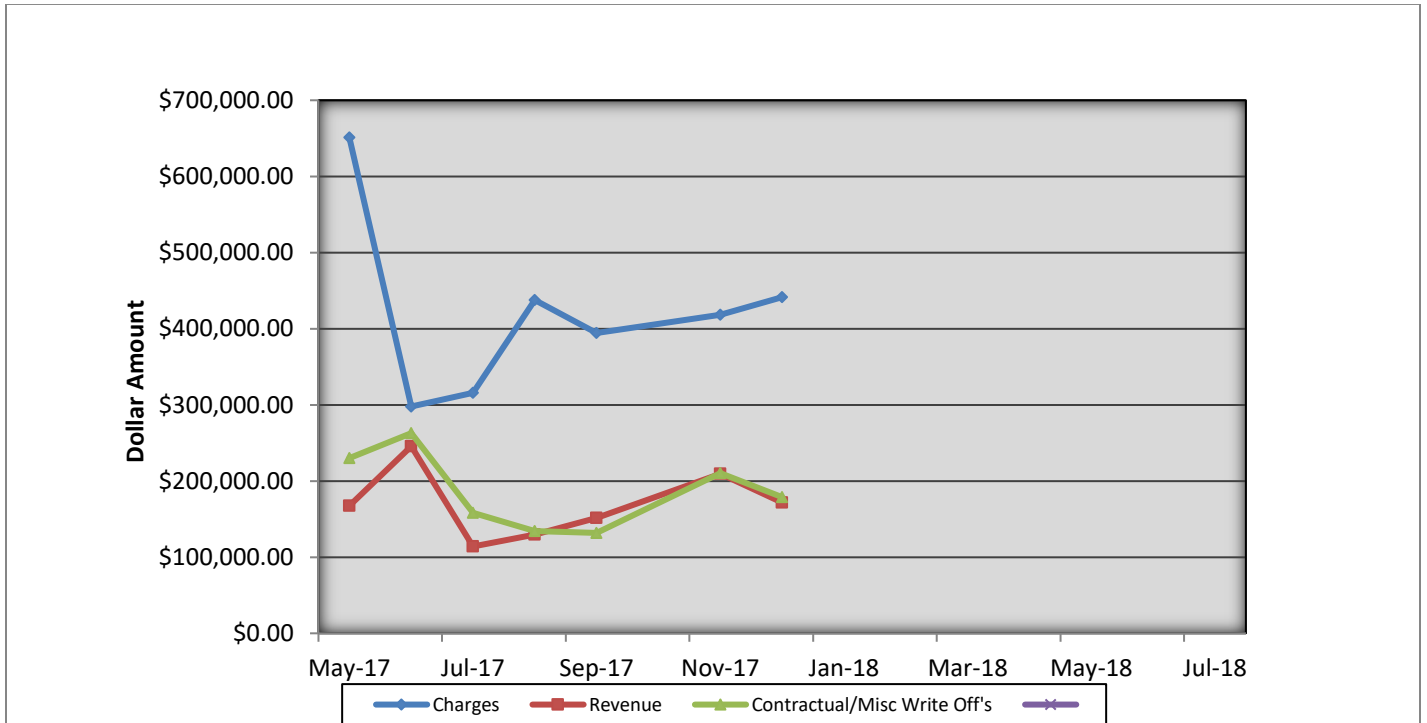


Bloomington Fire Dept EMS Billing

Fiscal Year 2017/2018



- Charges represent billings for emergency transports, intercepts, and ambulance standby's.
- Revenue represents the amount of revenue collected for emergency transports, intercepts, and ambulance stand by's.
- Contractual/Miscellaneous Write Off's- are the combination of contractual allowances and miscellaneous write off's. Contractuals are the amounts above what federal and state mandated carriers allow for EMS services. Miscellaneous write off's include Financial Hardships, Bankruptcies, Small Balances, Workman's Compensation, and Incarcerated Patients.
- Bad Debt-Write off's on the accounts forwarded to a third party collection agency for further collection processing \$17,769.55

Totals Breakdown

Charge total-\$441,479.75

Revenue-\$171,784.86

Contractuals/Miscellaneous Write Offs \$178,866.89

Charge Type Detail Report (Trip Date)

Period IS 201712 OR -201712; AND Company IS City of Bloomington

	<u>Count</u>	<u>Dollars</u>
City of Bloomington		
ALS Emergency		
BLFD ALS Emergency Base Rate	248.0	188,497.36
Totals For Type: ALS Emergency	248.0	\$ 188,497.36
ALS Emergency II		
BLFD ALS II Emergency Base Rat	2.0	1,705.08
Totals For Type: ALS Emergency II	2.0	\$ 1,705.08
BLS Emergency		
BLFD BLS Emergency Base Rate	347.0	219,782.86
Totals For Type: BLS Emergency	347.0	\$ 219,782.86
Mileage		
BLFD Mileage	1,639.1	24,916.38
Totals For Type: Mileage	1,639.1	\$ 24,916.38
Misc Fee		
Interest	136,098.0	1,360.98
Totals For Type: Misc Fee	136,098.0	\$ 1,360.98
Misc. Services		
BLFD ALS Intercept Fee	10.0	2,946.50
BLFD ALSII Intercept Fee	1.0	426.47
BLFD Returned check fee	1.0	25.00
Totals For Type: Misc. Services	12.0	\$ 3,397.97
Misc. Supplies		
BLFD Oxygen	78.0	1,439.10
Totals For Type: Misc. Supplies	78.0	\$ 1,439.10
Treatment No Transport		
BLFD Treatment no transport	2.0	380.02
Totals For Type: Treatment No Transport	2.0	\$ 380.02

RescueNet™ Reporting

Charge Type Detail Report (Trip Date)

Period IS 201712 OR -201712; AND Company IS City of Bloomington

	<u>Count</u>	<u>Dollars</u>
City of Bloomington (cont.)		
Totals For Company: City of Bloomington	138426.1	\$441,479.75
Report Totals:	138,426.1	\$ 441,479.75

**Bloomington Comparison Report
December 2017**

	Current Month 12/2017	Previous Year 12/2016	Previous Month 11/2017
Charges			
BLS	347	341	353
ALS	248	170	214
ALS II	2	2	4
Charge Totals	\$441,479.75	\$360,005.65	\$418,474.42
Payments			
Payments	\$171,784.86	\$193,929.66	\$209,595.15
Bad Debt W/O	\$17,769.55	\$30,178.92	\$51,933.61
Cont/Misc W/O	\$178,866.89	\$260,070.22	\$210,296.86



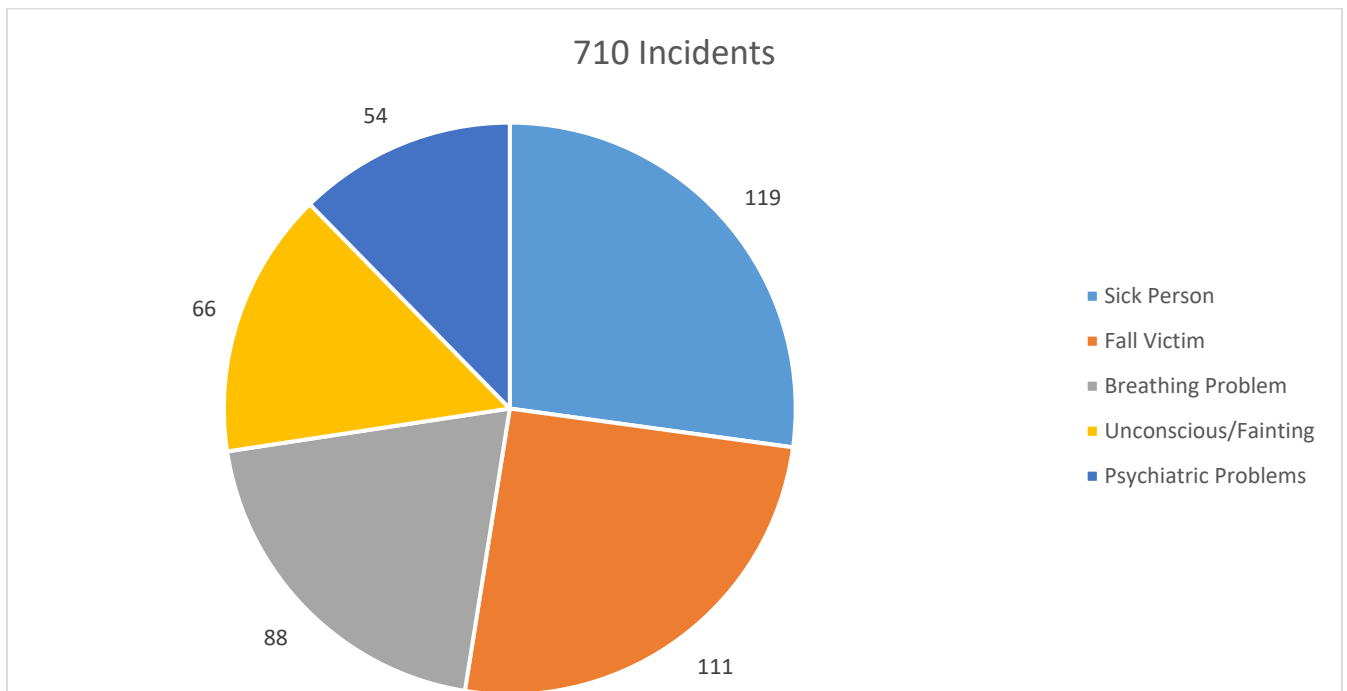
Bloomington Fire Dept.

Monthly EMS Response Report

December 2017



Total EMS Response: 710
Total Patients: 664
Total Transported: 582





Bloomington Fire Dept.

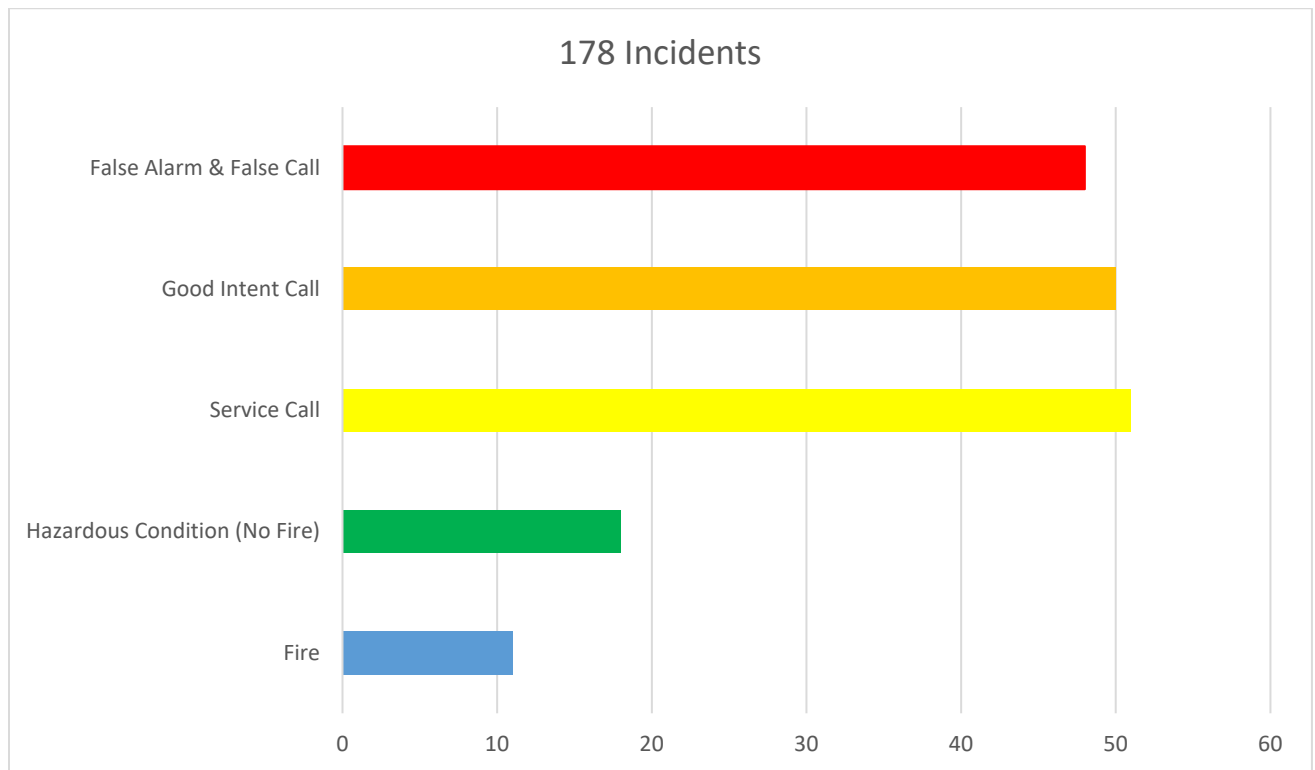
Monthly Fire Response Report

December 2017



Total Fire Response:	178
Total Structure Fires:	4
Total Estimated Dollar Loss (Property and Contents):	\$43,600

Top 5 Fire Responses

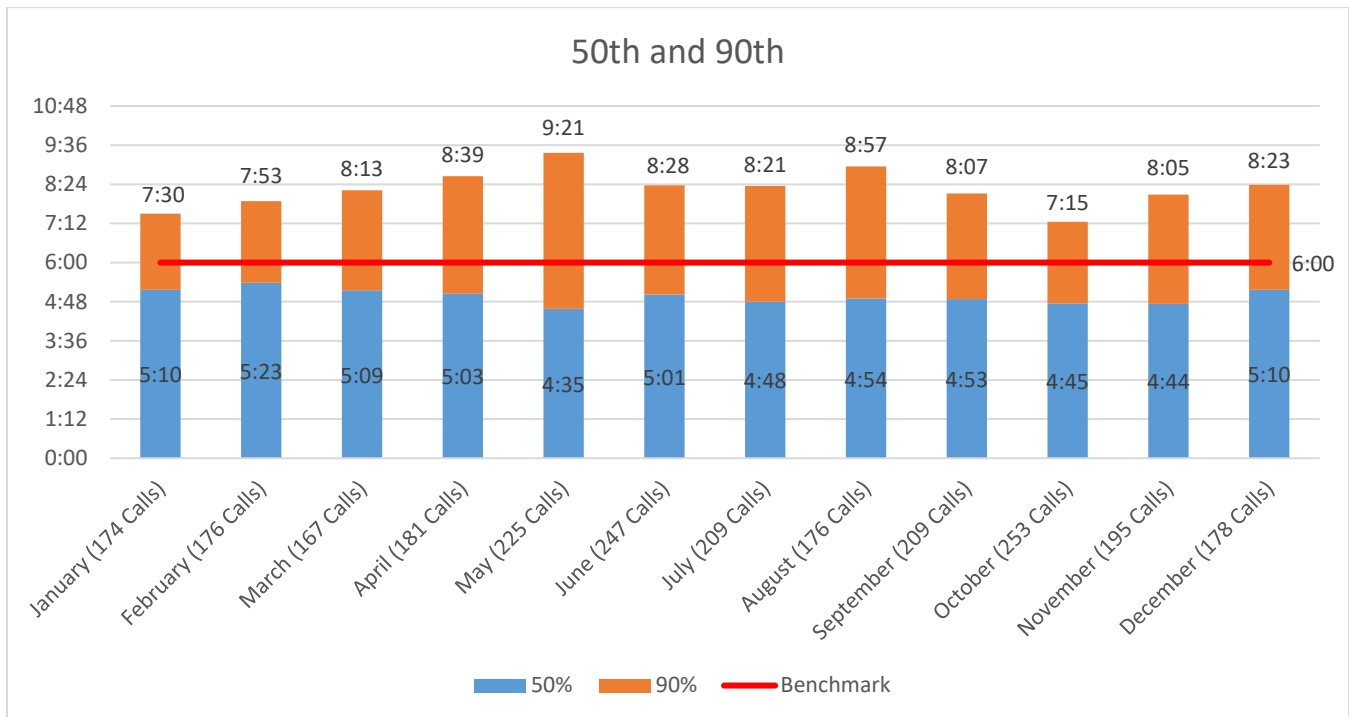
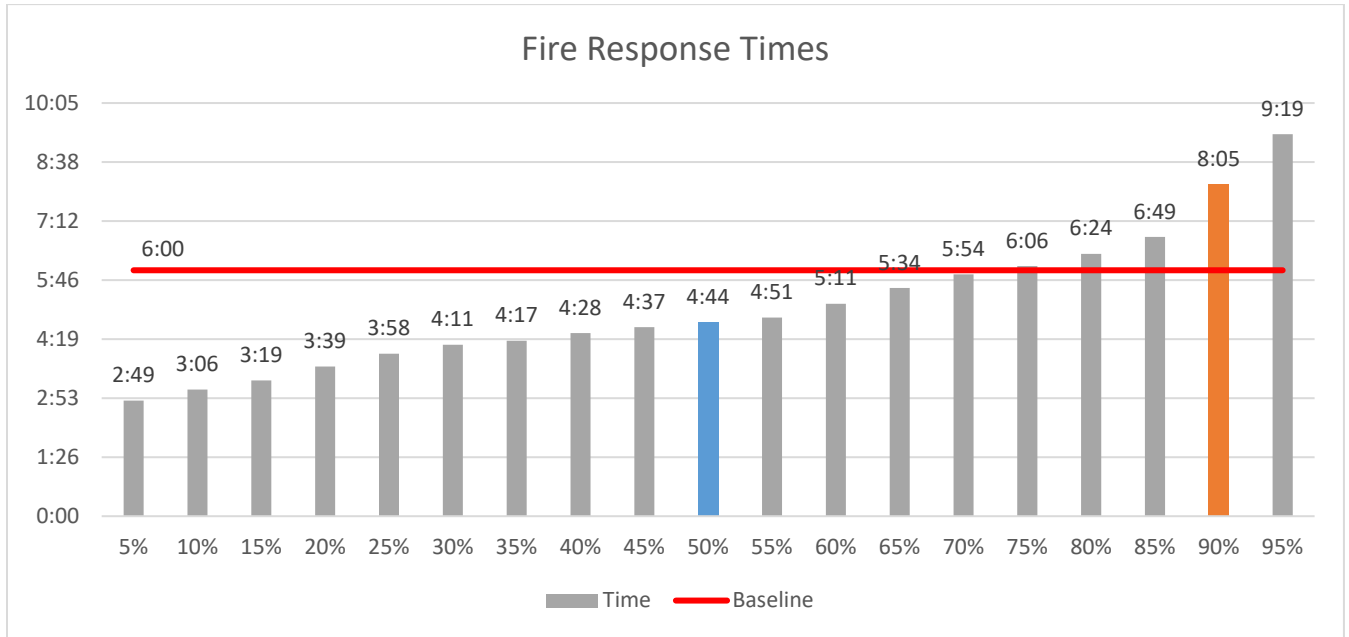




Bloomington Fire Dept.

Fire Response Times

December 2017





Bloomington Fire Dept.

EMS Response Times

December 2017

