

Charge Type Detail Report (Trip Date)

Period IS 201711 OR -201711; AND Company IS City of Bloomington

	<u>Count</u>	<u>Dollars</u>
City of Bloomington		
ALS Emergency		
BLFD ALS Emergency Base Rate	214.0	162,654.98
Totals For Type: ALS Emergency	214.0	\$ 162,654.98
ALS Emergency II		
BLFD ALS II Emergency Base Rat	4.0	3,410.16
Totals For Type: ALS Emergency II	4.0	\$ 3,410.16
BLS Emergency		
BLFD BLS Emergency Base Rate	353.0	223,583.14
Totals For Type: BLS Emergency	353.0	\$ 223,583.14
Mileage		
BLFD Mileage	1,530.9	23,269.68
Totals For Type: Mileage	1,530.9	\$ 23,269.68
Misc Fee		
Interest	98,965.0	989.65
Totals For Type: Misc Fee	98,965.0	\$ 989.65
Misc. Services		
BLFD ALS Intercept Fee	9.0	2,651.85
BLFD Returned check fee	-1.0	-25.00
BLFD Standby Medic College Spo	2.0	440.00
Totals For Type: Misc. Services	10.0	\$ 3,066.85
Misc. Supplies		
BLFD Oxygen	71.0	1,309.95
Totals For Type: Misc. Supplies	71.0	\$ 1,309.95
Treatment No Transport		
BLFD Treatment no transport	1.0	190.01
Totals For Type: Treatment No Transport	1.0	\$ 190.01

RescueNet™ Reporting

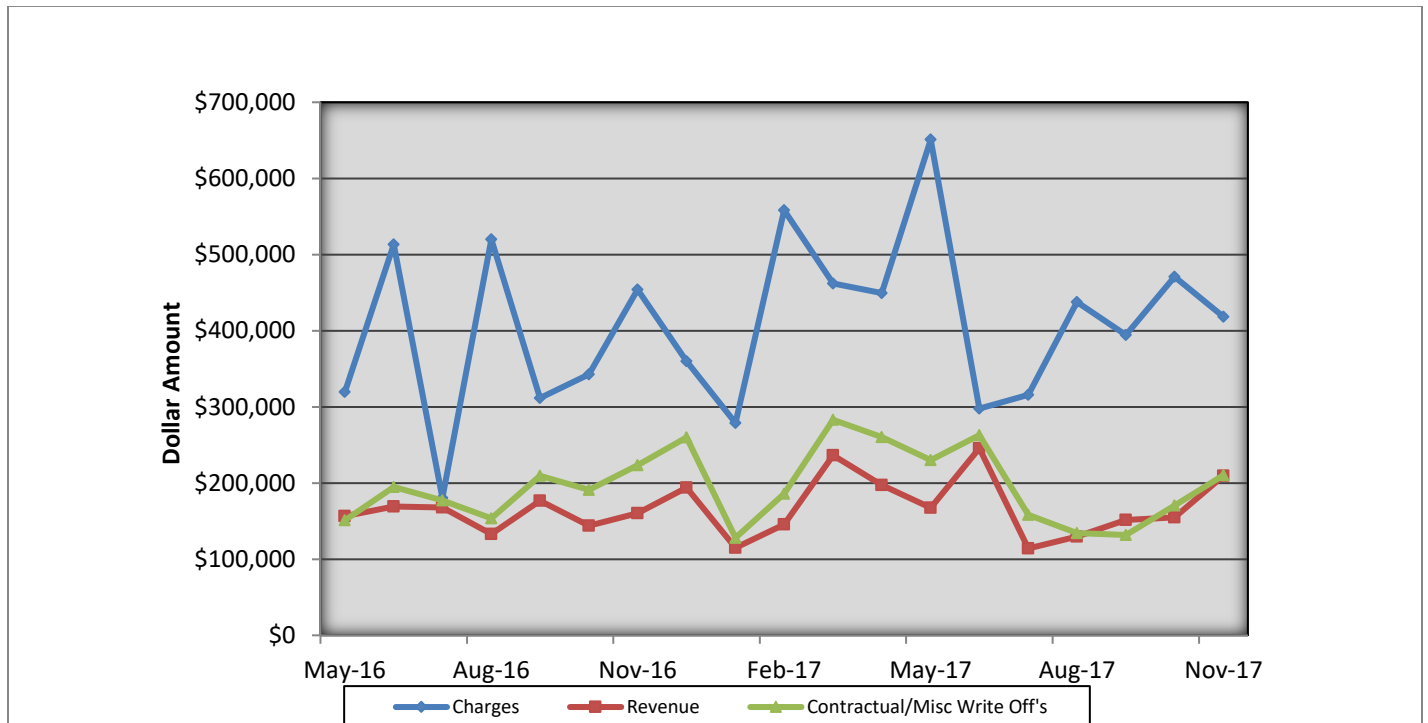
Charge Type Detail Report (Trip Date)

Period IS 201711 OR -201711; AND Company IS City of Bloomington

	<u>Count</u>	<u>Dollars</u>
City of Bloomington (cont.)		
Totals For Company: City of Bloomington	101148.9	\$418,474.42
Report Totals:	101,148.9	\$ 418,474.42

Bloomington Fire Dept EMS Billing

Fiscal Year 2016/2017



- Charges represent billings for emergency transports, intercepts, and ambulance standby's.
- Revenue represents the amount of revenue collected for emergency transports, intercepts, and ambulance stand by's.
- Contractual/Miscellaneous Write Off's- are the combination of contractual allowances and miscellaneous write off's. Contractuals are the amounts above what federal and state mandated carriers allow for EMS services. Miscellaneous write off's include Financial Hardships, Bankruptcies, Small Balances, Workman's Compensation, and Incarcerated Patients.
- Bad Debt-Write off's on the accounts forwarded to a third party collection agency for further collection processing \$51,933.61

Totals Breakdown

Charge total-\$418,474.42

Revenue-\$209,595.15

Contractuals/Miscellaneous Write Offs \$210,296.86

**Bloomington Comparison Report
November 2017**

	Current Month 11/2017	Previous Year 11/2016	Previous Month 10/2017
Charges			
BLS	353	387	410
ALS	214	239	226
ALS II	4	8	7
Charge Totals	\$418,474.42	\$453,960.99	\$470,968.51
Payments			
Payments	\$209,595.15	\$160,179.46	\$154,721.73
Bad Debt W/O	\$51,933.61	\$36,189.53	\$35,224.47
Cont/Misc W/O	\$210,296.86	\$223,209.49	\$170,265.28



Bloomington Fire Dept.

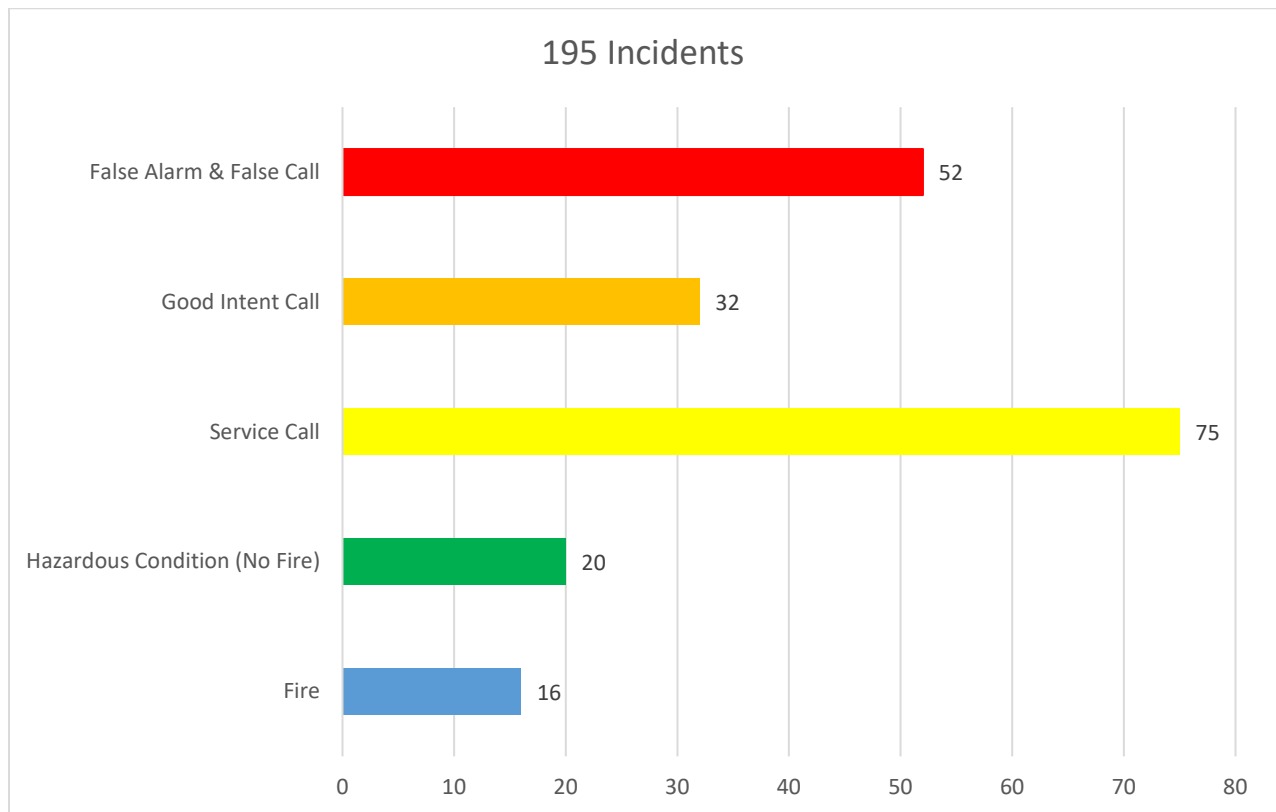
Monthly Fire Response Report

November 2017



Total Fire Response:	195
Total Structure Fires:	7
Total Estimated Dollar Loss (Property and Contents):	\$381,550

Top 5 Fire Responses





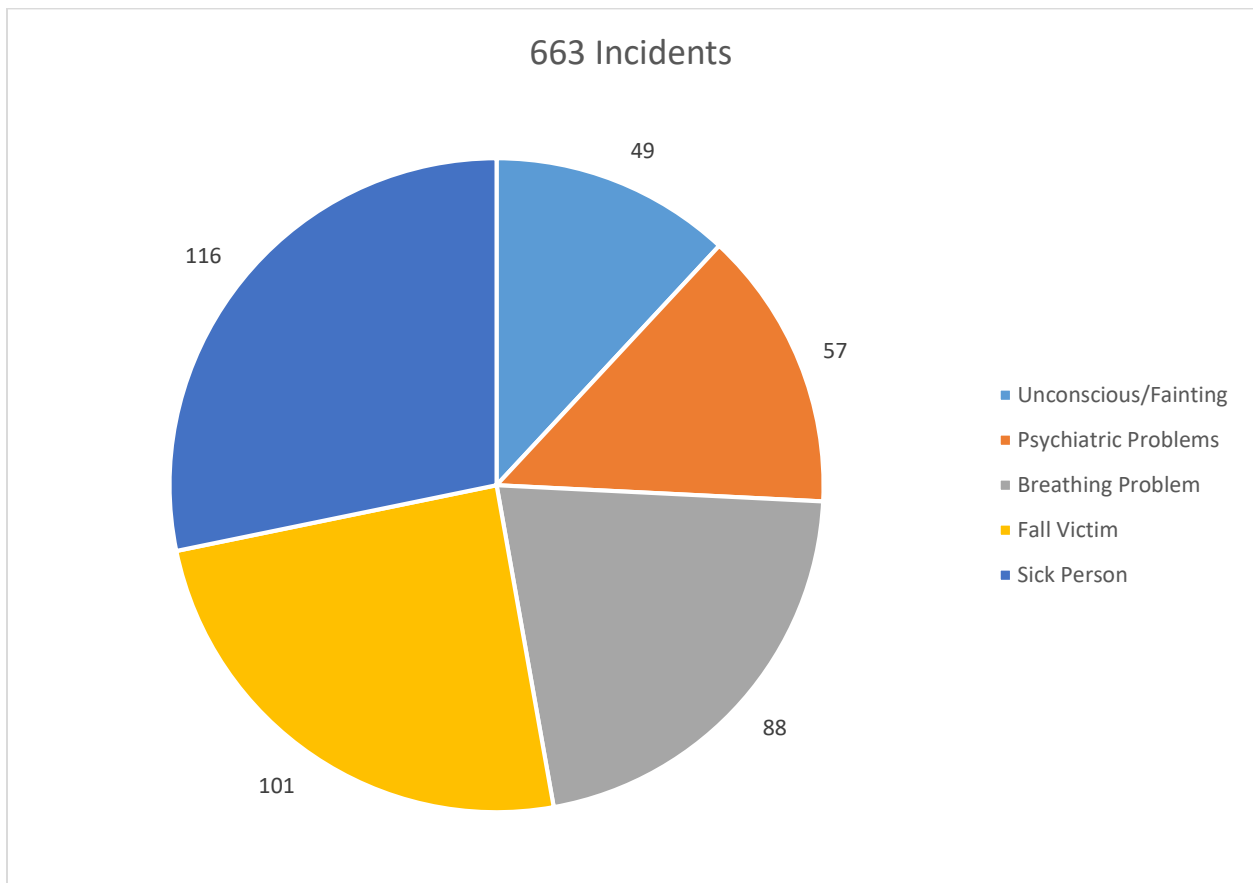
Bloomington Fire Dept.

Monthly EMS Response Report

November 2017



Total EMS Response: 663
Total Patients: 624
Total Transported: 606

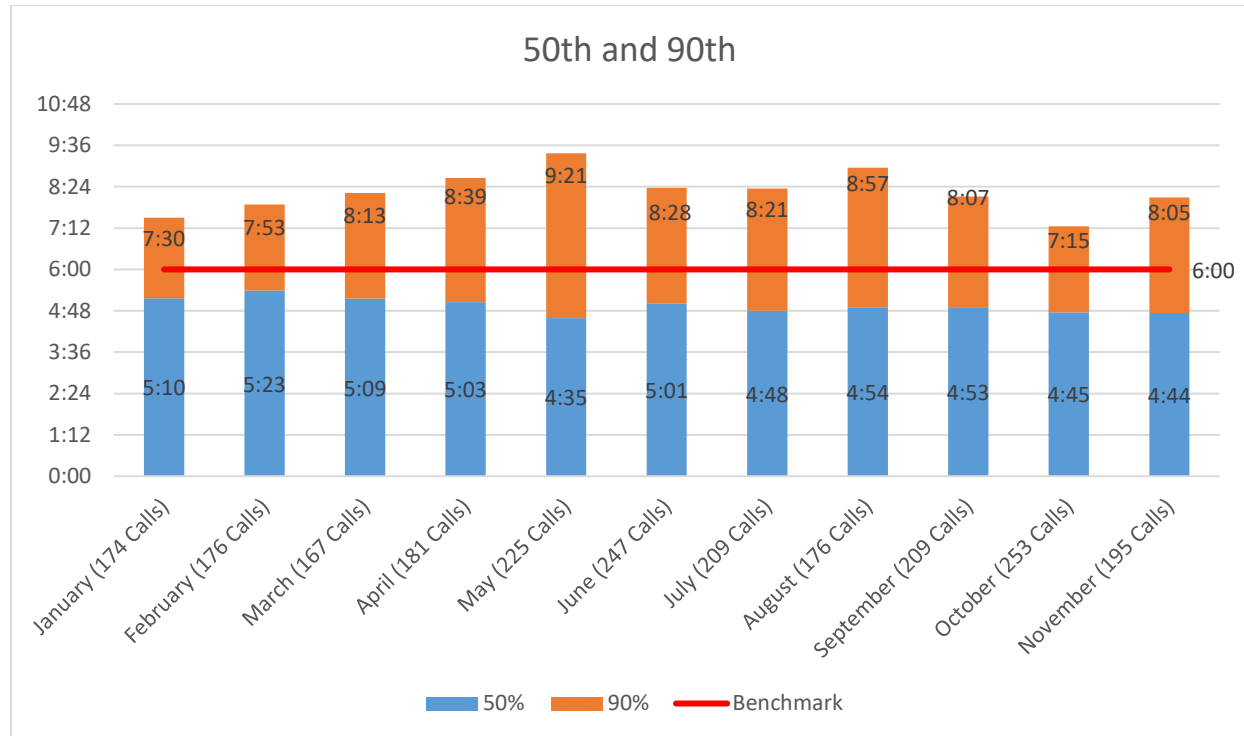
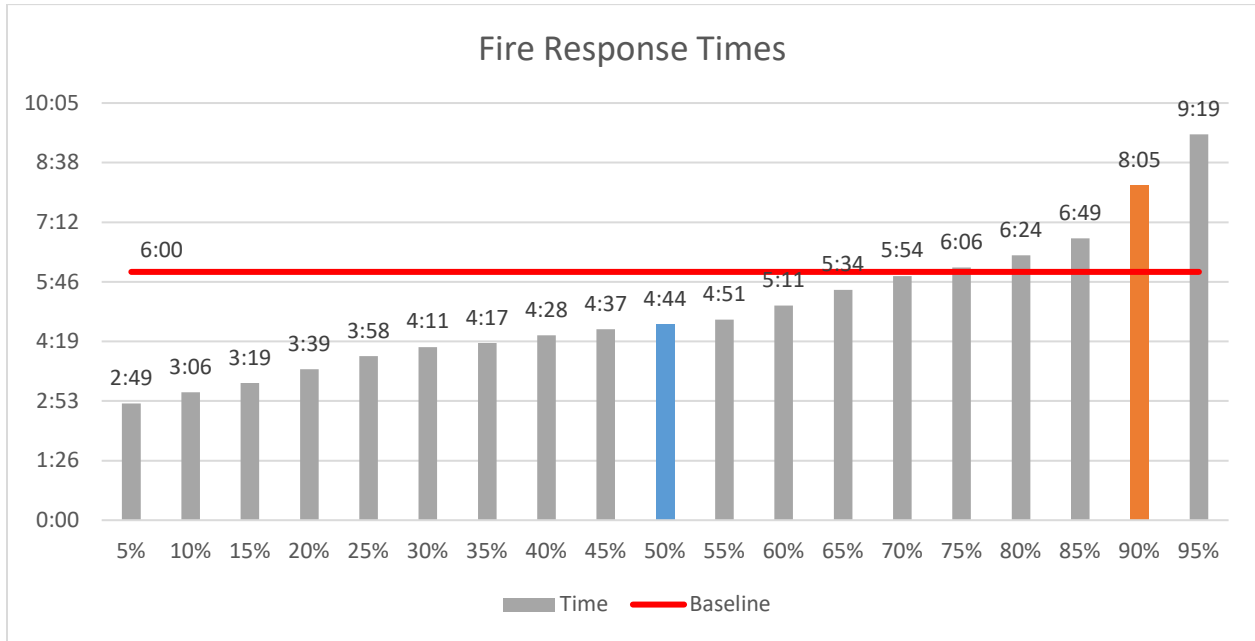




Bloomington Fire Dept.

Fire Response Times

November 2017





Bloomington Fire Dept.

EMS Response Times

November 2017

